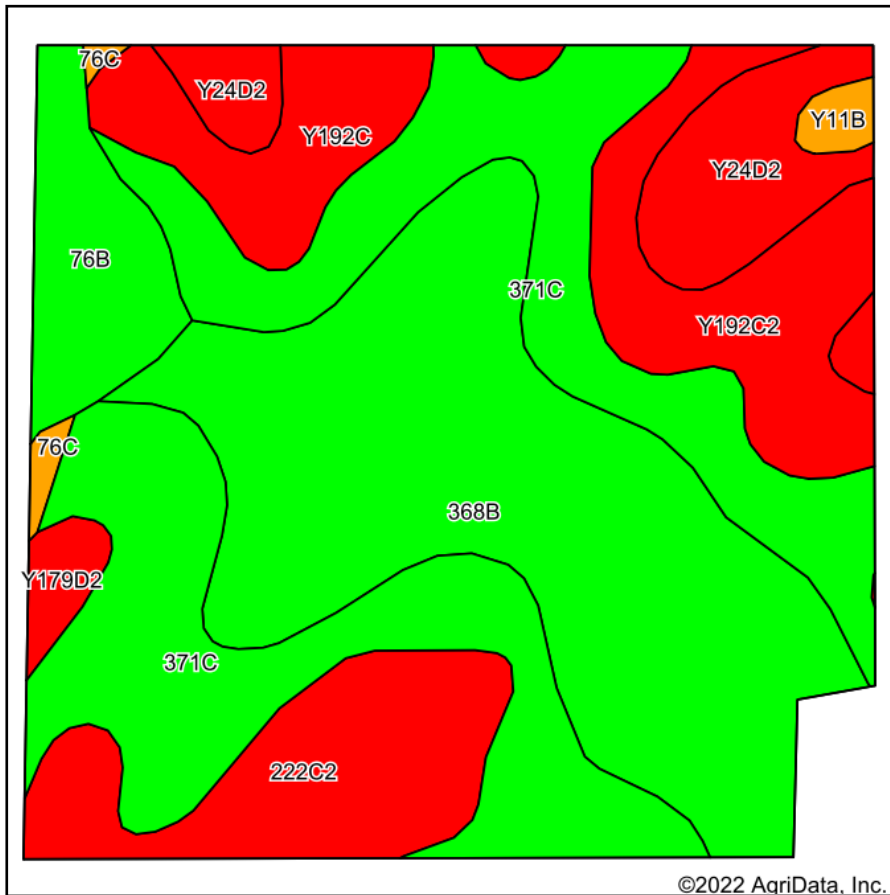
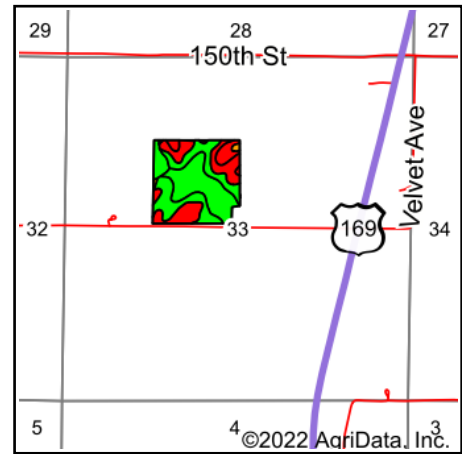


# Total Soils Map



Soils data provided by USDA and NRCS.



State: **Iowa**  
 County: **Union**  
 Location: **33-73N-28W**  
 Township: **New Hope**  
 Acres: **37.78**  
 Date: **12/21/2022**



Maps Provided By:



Area Symbol: IA175, Soil Area Version: 25

Code	Soil Description	Acres	Percent of field	CSR2 Legend	Non-Irr Class *c	CSR2**	CSR	*n NCCPI Overall	
368B	Macksburg silty clay loam, 2 to 5 percent slopes	11.69	30.9%	Green	Ile	89	90	87	
371C	Nira-Sharpsburg silty clay loams, 5 to 9 percent slopes	11.55	30.6%	Green	IIIle	88	69	94	
222C2	Clarinda silty clay loam, 5 to 9 percent slopes, moderately eroded	3.52	9.3%	Red	IVw	28	25	53	
Y192C2	Adair clay loam, dissected till plain, 5 to 9 percent slopes, eroded	3.15	8.3%	Red	IIIle	33		63	
Y24D2	Shelby clay loam, dissected till plain, 9 to 14 percent slopes, eroded	2.59	6.9%	Red	IIIle	49		73	
Y192C	Adair clay loam, dissected till plain, 5 to 9 percent slopes	2.28	6.0%	Red	IIIle	36		71	
76B	Ladoga silt loam, 2 to 5 percent slopes	2.08	5.5%	Green	Ile	86	82	82	
Y179D2	Gara loam, dissected till plain, 9 to 14 percent slopes, eroded	0.46	1.2%	Red	IVe	43		73	
Y11B	Colo, occasionally flooded-Ely silty clay loams, dissected till plain, 2 to 5 percent slopes	0.26	0.7%	Orange	IIw	80		87	
76C	Ladoga silt loam, dissected till plain, 5 to 9 percent slopes	0.20	0.5%	Orange	IIIle	80	67	79	
<b>Weighted Average</b>						<b>2.73</b>	<b>71.6</b>	<b>*-</b>	<b>*n 81.6</b>

\*\*IA has updated the CSR values for each county to CSR2.

\*- CSR weighted average cannot be calculated on the current soils data, use prior data version for csr values.

\*n: The aggregation method is "Weighted Average using all components"

\*c: Using Capabilities Class Dominant Condition Aggregation Method

Soils data provided by USDA and NRCS.