

# DAWSON COUNTY

81.91 ACRES M/L | LISTING #16613

# Nebraska



## DESCRIPTION

Peoples Company is pleased to offer 81.91 acres m/l located in Dawson County, Nebraska. This irrigated property is located about 2 miles southeast of Lexington, Nebraska. The property is almost completely tillable offering a great return to the new buyer. Additionally, the irrigated soils are made up of class I and III. Easy access to the property will be beneficial as the buyers can get to grain facilities quickly. The pivot on the property is tenant owned. This is a great opportunity to add to your portfolio in Dawson County! Please call today for more information.

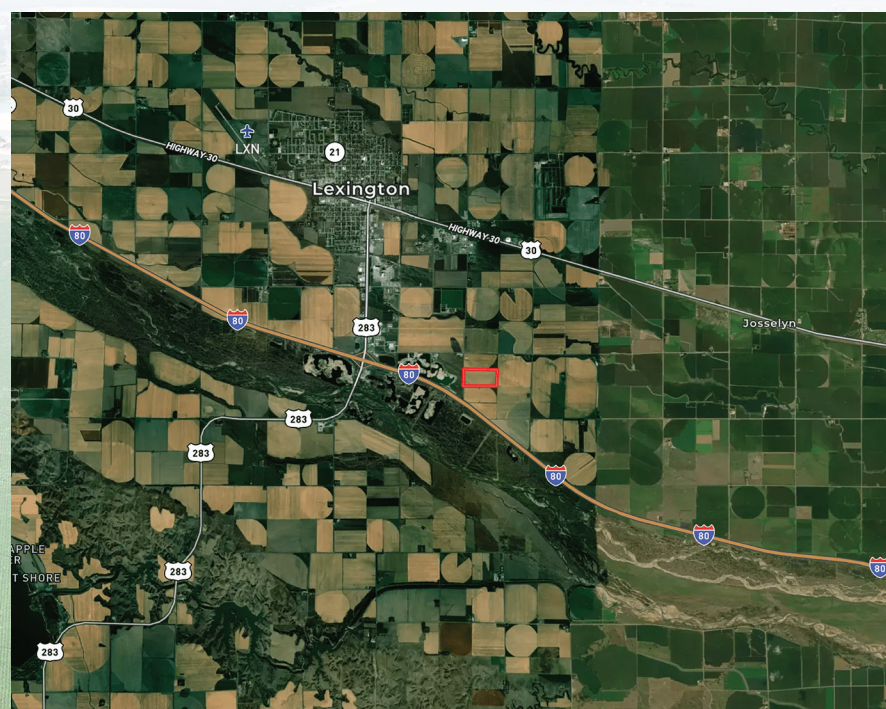
## DIRECTIONS

From the intersection of Highway 30 and Road 435 go south for about 2.5 miles and the property will be on the east side of the road.

## IMPROVEMENTS

Electric Power Unit: 3 phase-US Motors-75 HP-Model DT96

**PRICE: \$763,370.90**



LAND AVAILABLE | DAWSON COUNTY, NE | 81.91 ACRES M/L | LISTING #16613



*Dylan Duren*

402.215.4161

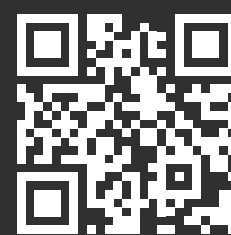
Dylan@PeoplesCompany.com



*Nic Smith*

402.210.4194

Nic@PeoplesCompany.com



All information, regardless of source, is deemed reliable but not guaranteed and should be independently verified. The information may not be used for any purpose other than to identify and analyze properties and services. The data contained herein is copyrighted by Peoples Company and is protected by all applicable copyright laws. Any dissemination of this information is in violation of copyright laws and is strictly prohibited.

**PEOPLES**  
COMPANY  
INTEGRATED LAND SOLUTIONS