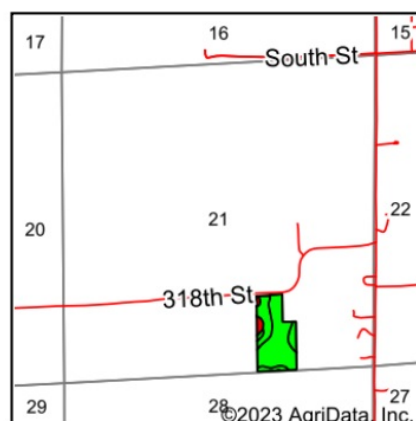
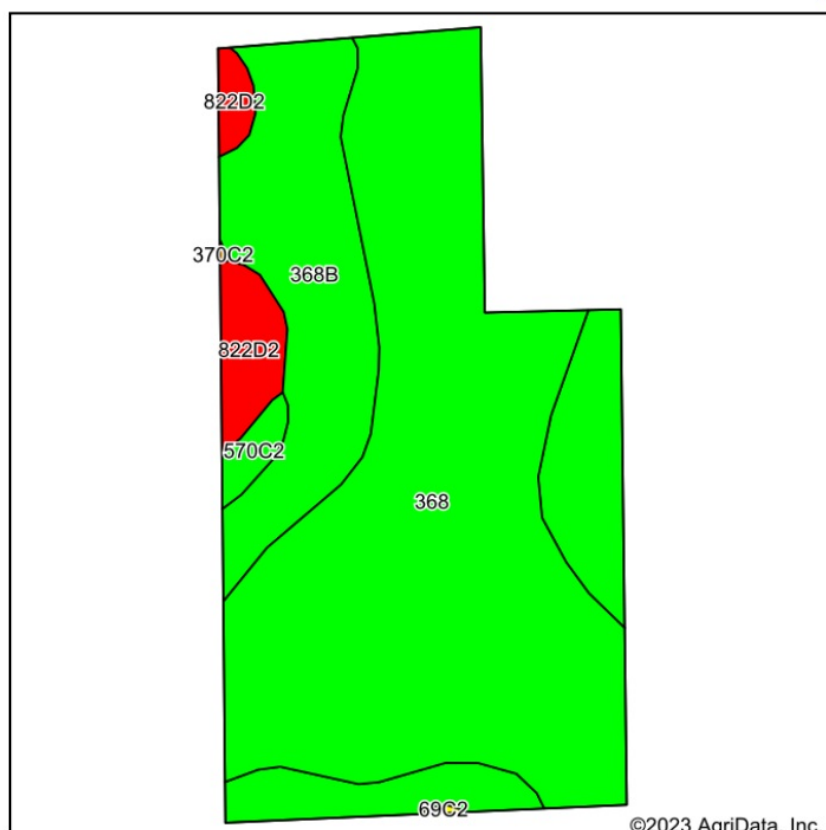


## Total Soils Map



State: **Iowa**  
 County: **Madison**  
 Location: **21-74N-26W**  
 Township: **Ohio**  
 Acres: **16.98**  
 Date: **1/11/2023**



Area Symbol: IA121, Soil Area Version: 26

Code	Soil Description	Acres	Percent of field	CSR2 Legend	Non-Irr Class *c	CSR2**	*n NCCPI Overall	
368	Macksburg silty clay loam, 0 to 2 percent slopes	10.73	63.2%		lw	93	87	
368B	Macksburg silty clay loam, 2 to 5 percent slopes	5.25	30.9%		Ile	89	87	
822D2	Lamoni clay loam, 9 to 14 percent slopes, eroded	0.77	4.5%		IVe	7	57	
570C2	Nira silty clay loam, dissected till plain, 5 to 9 percent slopes, eroded	0.23	1.4%		IIIe	81	84	
<b>Weighted Average</b>						<b>1.47</b>	<b>87.7</b>	<b>*n 85.6</b>

\*\*IA has updated the CSR values for each county to CSR2.

\*n: The aggregation method is "Weighted Average using all components"

\*c: Using Capabilities Class Dominant Condition Aggregation Method