

CRAIGHEAD COUNTY, Arkansas

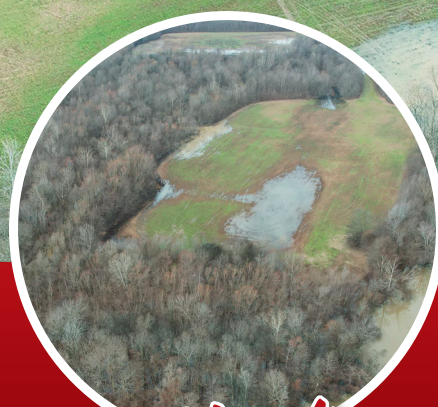
155 ACRES M/L



Directions

Once in Lake City, AR heading East go approximately 2 miles and turn left on Macey Road. Property on the left which borders Macey Road and Highway 18 East.

1111 Macey Road
Lake City, AR 72437



About

Peoples Company of the Delta Region is proud to present 155 +/- acres of recreational property located in Craighead County, Arkansas. This property can be found inside the St. Francis River levee northeast of Lake City. There are 35.89 +/- acres of tillable cropland per the FSA. Located in the heart of a major flyway, this tract offers great duck hunting potential as well as whitetail, turkey, and small game hunting. Close proximity to Jonesboro could allow you to be shooting ducks in the timber or sitting on a deer stand in just minutes. The property is accessed via Macey Road and has Highway 18 road frontage.

Land Available



LISTING #16650

PRICE

\$542,500

GROSS TAXES

\$1,500.00



Soils Map

Code	Soil Description	Acres	% of Field	NCCPI
1	Amagon fine sandy loam	86.45	56.0%	72 ●
38	Sharkey soils	46.05	29.8%	19 ●
16	Dubbs fine sandy loam	17.21	11.1%	76 ●
42	Levee	3.84	2.5%	- ●
41	Water	0.82	0.5%	- ●
4	Beulah fine sandy loam	0.07	0.0%	59 ●

Weighted Average: 54.5



Matt Vangilder

501.213.5006

MATT.VANGILDER@PEOPLES COMPANY.COM



All information, regardless of source, is deemed reliable but not guaranteed and should be independently verified. The information may not be used for any purpose other than to identify and analyze properties and services. The data contained herein is copyrighted by Peoples Company and is protected by all applicable copyright laws. Any dissemination of this information is in violation of copyright laws and is strictly prohibited.