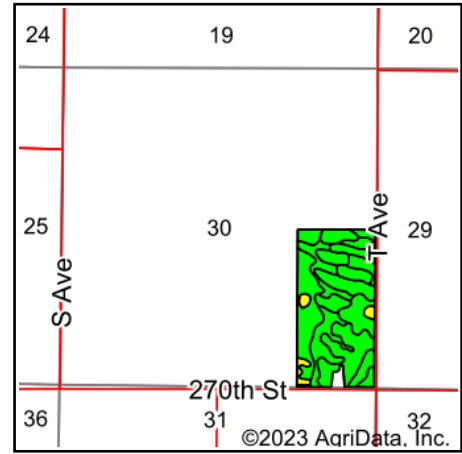
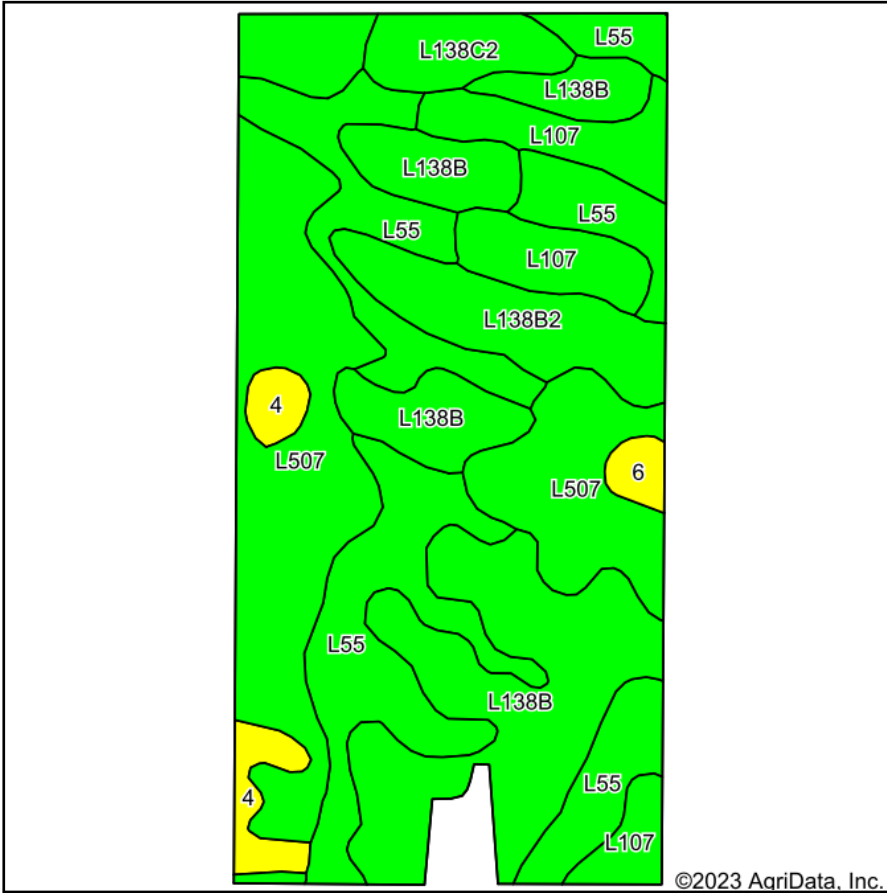


Tillable Soils Map



State: **Iowa**
 County: **Greene**
 Location: **30-83N-29W**
 Township: **Washington**
 Acres: **75.11**
 Date: **2/16/2023**



Maps Provided By:



© AgriData, Inc. 2021

www.AgriDataInc.com



Soils data provided by USDA and NRCS.

Area Symbol: IA073, Soil Area Version: 28

Code	Soil Description	Acres	Percent of field	CSR2 Legend	Non-Irr Class *c	*i Corn Bu	*i Soybeans Bu	CSR2**	CSR	*n NCCPI Overall	
L507	Canisteo clay loam, Bemis moraine, 0 to 2 percent slopes	20.33	27.1%		llw	0.0	0.0	87		81	
L55	Nicollet loam, 1 to 3 percent slopes	19.03	25.3%		le	0.0	0.0	91		84	
L138B	Clarion loam, Bemis moraine, 2 to 6 percent slopes	18.58	24.7%		lle	220.8	64.0	88		79	
L107	Webster clay loam, Bemis moraine, 0 to 2 percent slopes	6.58	8.8%		llw	0.0	0.0	88		84	
L138B2	Clarion loam, Bemis moraine, 2 to 6 percent slopes, moderately eroded	5.03	6.7%		lle	0.0	0.0	85		70	
L138C2	Clarion loam, Bemis moraine, 6 to 10 percent slopes, moderately eroded	2.66	3.5%		llle	0.0	0.0	83		65	
4	Knoke silty clay loam, 0 to 1 percent slopes	2.18	2.9%		lllw	177.6	51.5	56	58	75	
6	Okoboji silty clay loam, 0 to 1 percent slopes	0.72	1.0%		lllw	185.6	53.8	59	58	76	
Weighted Average						1.82	61.6	17.8	86.9	*-	*n 80

**IA has updated the CSR values for each county to CSR2.

*- CSR weighted average cannot be calculated on the current soils data, use prior data version for csr values.

*i Yield data provided by the ISPAID Database version 8.1.1 developed by IA State University.

*n: The aggregation method is "Weighted Average using all components"

*c: Using Capabilities Class Dominant Condition Aggregation Method

Soils data provided by USDA and NRCS.