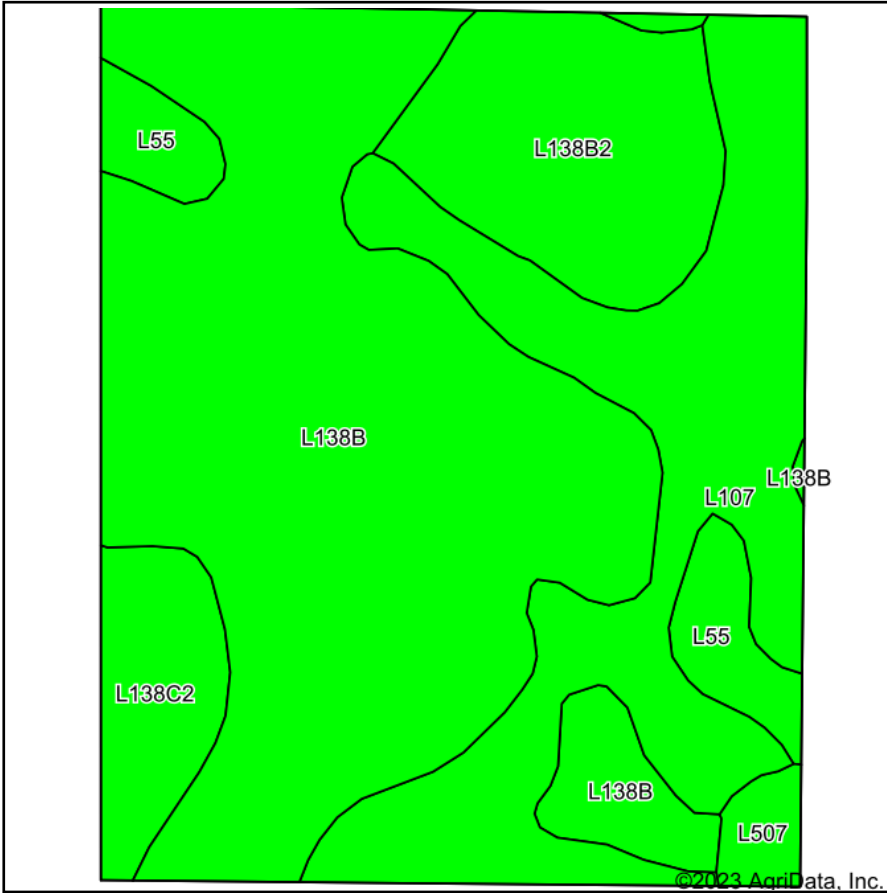
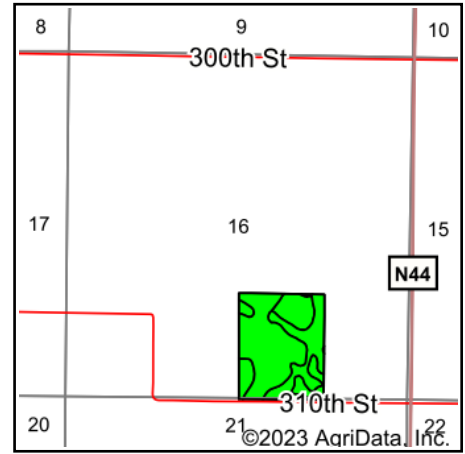


# Tillable Soils Map



Soils data provided by USDA and NRCS.



State: **Iowa**  
 County: **Carroll**  
 Location: **16-82N-33W**  
 Township: **Union**  
 Acres: **48.6**  
 Date: **2/21/2023**



Maps Provided By:



© AgriData, Inc. 2021

www.AgriDataInc.com



Area Symbol: IA027, Soil Area Version: 27

Code	Soil Description	Acres	Percent of field	CSR2 Legend	Non-Irr Class *c	*i Corn Bu	*i Soybeans Bu	CSR2**	*n NCCPI Overall	
L138B	Clarion loam, Bemis moraine, 2 to 6 percent slopes	24.76	50.9%		Ile	220.8	64.0	88	79	
L107	Webster clay loam, Bemis moraine, 0 to 2 percent slopes	12.49	25.7%		IIw	0.0	0.0	88	84	
L138B2	Clarion loam, Bemis moraine, 2 to 6 percent slopes, moderately eroded	5.84	12.0%		Ile	0.0	0.0	85	70	
L138C2	Clarion loam, Bemis moraine, 6 to 10 percent slopes, moderately eroded	2.63	5.4%		IIIe	0.0	0.0	83	65	
L55	Nicollet loam, 1 to 3 percent slopes	2.20	4.5%		Ie	0.0	0.0	91	84	
L507	Canisteo clay loam, Bemis moraine, 0 to 2 percent slopes	0.68	1.4%		IIw	0.0	0.0	87	81	
<b>Weighted Average</b>						<b>2.01</b>	<b>112.5</b>	<b>32.6</b>	<b>87.5</b>	<b>*n 78.7</b>

\*\*IA has updated the CSR values for each county to CSR2.

\*i Yield data provided by the ISPAID Database version 8.1.1 developed by IA State University.

\*n: The aggregation method is "Weighted Average using all components"

\*c: Using Capabilities Class Dominant Condition Aggregation Method

Soils data provided by USDA and NRCS.