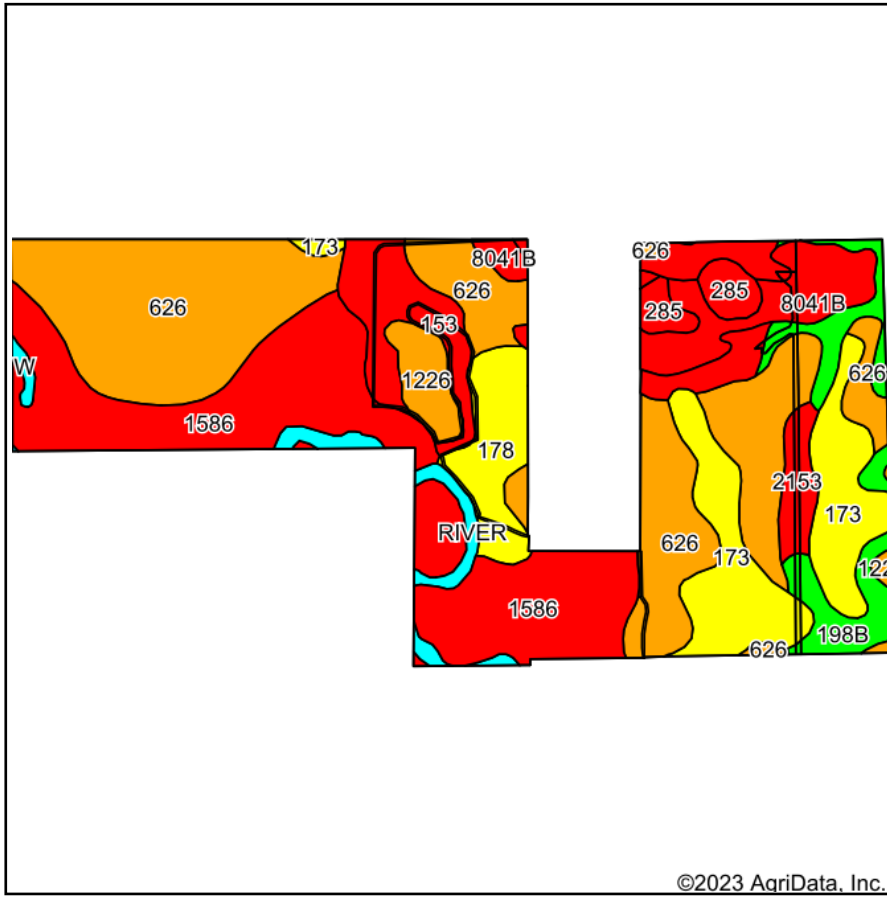
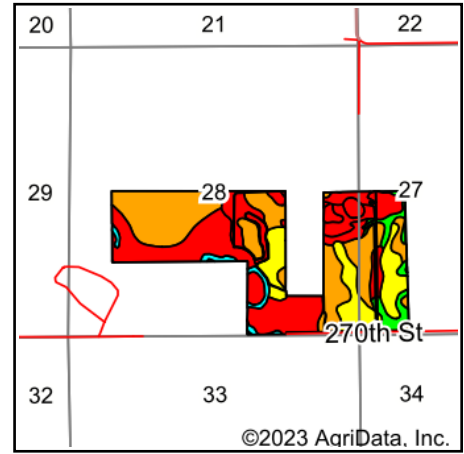


Total Soils Map



Soils data provided by USDA and NRCS.



State: **Iowa**
 County: **Bremer**
 Location: **28-91N-11W**
 Township: **Franklin**
 Acres: **217**
 Date: **2/27/2023**



Maps Provided By:



Area Symbol: IA017, Soil Area Version: 27

Code	Soil Description	Acres	Percent of field	CSR2 Legend	Non-Irr Class *c	Irr Class *c	CSR2**
626	Hayfield loam, 0 to 2 percent slopes, rarely flooded	70.55	32.5%		Ils		53
1586	Sigglekov-Fluvaquents, channeled-Aquents, ponded, complex, 0 to 2 percent slopes, frequently flooded	51.57	23.8%		VIIIw		5
173	Hoopeston sandy loam, terrace, 0 to 2 percent slopes, rarely flooded	24.53	11.3%		Ils		60
153	Shandep loam, ponded, 0 to 1 percent slopes, occasionally flooded	17.95	8.3%		VIIIw		28
8041B	Sparta loamy sand, terrace, 2 to 5 percent slopes, rarely flooded	12.33	5.7%		IVs	Ile	39
198B	Floyd loam, 1 to 4 percent slopes	11.50	5.3%		IIw		89
178	Waukee loam, 0 to 2 percent slopes, rarely flooded	10.09	4.6%		Ils		69
1226	Lawler loam, 0 to 2 percent slopes, rarely flooded	5.24	2.4%		Ils		59
285	Burkhardt sandy loam, 0 to 2 percent slopes, rarely flooded	4.36	2.0%		IIIs	Ile	23
RIVER	Water, rivers and streams	4.29	2.0%				0
2153	Shandep clay loam, 0 to 2 percent slopes, ponded, occasionally flooded	3.91	1.8%		Vw		21
W	Water	0.68	0.3%				0
Weighted Average					*-	*-	39.9

**IA has updated the CSR values for each county to CSR2.

*c: Using Capabilities Class Dominant Condition Aggregation Method

*- Non Irr Class weighted average cannot be calculated on the current soils data due to missing data.

*- Irr Class weighted average cannot be calculated on the current soils data due to missing data.

Soils data provided by USDA and NRCS.