

**HUNTING AND RECREATIONAL PROPERTY AVAILABLE**

# Dallas

**COUNTY, IOWA**



**Listing #16752 | County Road P46/D Avenue, Dawson, IA 50066**



**84.81**  
**Acres M/L**

**MATT ADAMS**  
515.423.9235  
[Matt@PeoplesCompany.com](mailto:Matt@PeoplesCompany.com)

**ROSS ZELINSKY**  
515.720.7138  
[Ross@PeoplesCompany.com](mailto:Ross@PeoplesCompany.com)







Dallas County, Iowa River Frontage and Recreational Property – Peoples Company is pleased to present 84.81 Acres M/L of diverse Dallas County, Iowa hunting property located just north of Dawson, Iowa, and one-half mile south of the Dallas/Greene County line. This combination property boasts abundant recreational opportunities for hunters and the avid outdoorsmen with well over a mile of North Raccoon River frontage, mature blocks of timber, and 23.19 FSA tillable acres with an average CSR2 rating of 75. This property has ultimate privacy, with access from the NW corner by way of an owned access from paved Co Hwy P46. The Des Moines Metro is a convenient 35-minute commute permitting flexible hunting schedules and shorter property visits. Also, located in Sections 3 & 10 of Dallas Township, Dallas County, Iowa.



Recreational enthusiasts will admire this tract with ample food sources, the blocks of hardwoods, and plentiful water sources that support a strong population of central Iowa deer, turkeys, and pheasants. The open areas amongst the surrounding timber offer great food plot areas with several deer stand/blind locations. Wildlife tends to stay near or follow water sources and the Raccoon River would create a natural funnel and pinch points that should facilitate whitetail deer travel all season long.

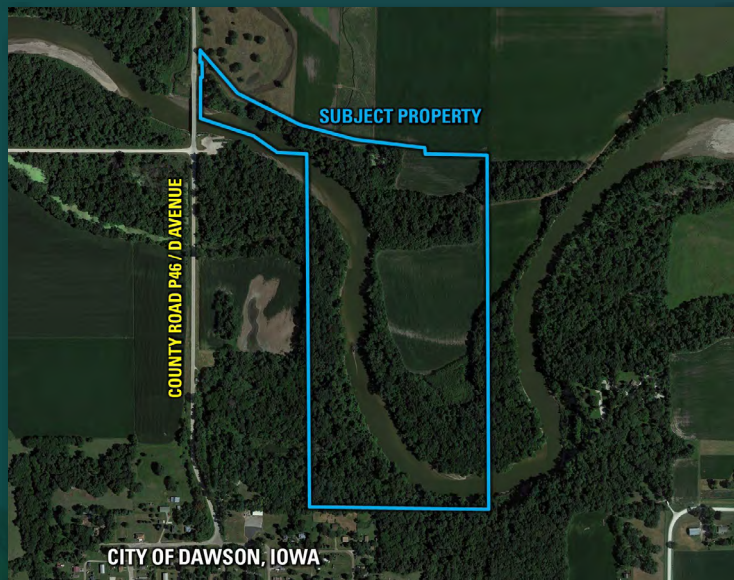
Additional recreational activities include hiking, kayaking, and an abundance of fishing for the avid angler. The Dallas County Sportsmen's Park borders the property on the southeast side, which offers camping opportunities, from luxurious RV hookups and cabin rentals to more traditional tent camping. Along the west side of the property is the Dallas County Boat Ramp, offering easy access into the Raccoon River. More importantly, the Dallas County Boat Ramp land borders the timber on the west side of the Raccoon River, allowing you to access your timber west of the river easier. Access through the Dallas County Boat Ramp land is restricted to foot traffic only. The access to the property is owned but there is an ingress/egress access easement for the neighbor to the north to access part of his property.

\*Please contact agent prior to entering the property.



**Directions:**

From Dawson, Iowa head north on East 3rd Street for a quarter (1/4) mile, East 3rd Street turns into County Road P46 / D Avenue, continue north for a half (1/2) mile until you reach the Raccoon River. Go north over the Raccoon River Bridge and the farm entrance is the first driveway on the east side of the road. Look for Peoples Company signs.



**MATT ADAMS**

**515.423.9235**

**Matt@PeoplesCompany.com**

**IA LIC S59699000**

**ROSS ZELINSKY**

**515.720.7138**

**Ross@PeoplesCompany.com**

**IA LIC S70718000**







12119 Stratford Drive  
Clive, IA 50325



PeoplesCompany.com  
Listing #16752

# Dallas

## COUNTY, IOWA

County Road P46/D Avenue,  
Dawson, IA 50066

**84.81**  
**Acres M/L**

**MATT ADAMS**  
**515.423.9235**  
**Matt@PeoplesCompany.com**

**ROSS ZELINSKY**  
**515.720.7138**  
**Ross@PeoplesCompany.com**



SCAN THE QR CODE WITH YOUR  
PHONE CAMERA TO VIEW THIS  
LISTING ONLINE!

All information, regardless of source, is deemed reliable but not guaranteed and should be independently verified. The information may not be used for any purpose other than to identify and analyze properties and services. The data contained herein is copyrighted by Peoples Company and is protected by all applicable copyright laws. Any dissemination of this information is in violation of copyright laws and is strictly prohibited.