

**CERTIFIED WETLAND DETERMINATION**

Clear Form

<b>1. Name:</b>	SUMMIT AG FUND III LLP	<b>2. Location County:</b>	019
<b>3. Address:</b>		<b>4. Admin. County:</b>	019
<b>5. Request Form:</b>	AD-1026	<b>6. Farm Number:</b>	7524
<b>7. Request Date:</b>	02/24/2021	<b>8. Tract Number:</b>	823

This certified wetland determination identifies areas subject to the wetland conservation provisions of the 1985 Food Security Act, as amended. See the attached Definitions of Wetland Labels and Uses for additional information and currently authorized activities under the Act.

Field	Label	Occurrence Year (CW+YEAR)	Acreage
1	PC		38.2
2	PC		44.6

**9. Remarks:**

I certify that the above determinations are sufficient for the purpose of making a determination of eligibility for program benefits and were conducted in accordance with policies and procedures contained in the National Food Security Act Manual.

<b>10. Signature Designated Conservationist</b>	<b>Date:</b>
<i>Laura Wilden</i>	03/31/2021

### Definitions of Wetland Labels and Uses

<b>Label/Name</b>	<b>Criteria for Determination</b>	<b>Authorized Uses</b>	<b>Authorized Maintenance</b>
<b>AW</b> (Artificial Wetland)	An area that was formerly a non-wetland area under natural conditions but now exhibits wetland characteristics because of the influence of human activities. These areas are exempt from the Food Security Act of 1985, as amended. This label includes irrigation induced wetlands.	No restrictions.	No restrictions.
<b>CPD</b> (Corps of Engineers (USACE) Permit with Mitigation)	A converted wetland authorized by a permit issued under Section 404 of the Clean Water Act by USACE.	Per USACE permit conditions.	Per USACE permit conditions
<b>CW</b> (Converted Wetland)	A wetland converted between December 23, 1985, and November 28, 1990.	Planting of agricultural commodities or additional manipulation will cause ineligibility.	Maintenance allowed to scope and effect of original manipulation.
<b>CW</b> (Wetland converted by county, drainage district, or similar entity)	Wetlands converted after December 23, 1985, by a county, drainage district, or similar entity and beyond a person's direct control, but not considered third party (TP).	Production of an agricultural commodity or forage for mechanical harvest or additional manipulation will cause ineligibility for USDA program benefits.	Maintenance allowed to original scope and effect of system before conversion.
<b>CW+Year</b> (Converted Wetland)	A wetland converted after November 28, 1990. "Year" indicates the year the wetland was converted, and ineligibility begins.	USDA program participant and their affiliated persons are ineligible for benefits (regardless of whether ag commodity planting occurred) until the wetland is restored or mitigated. Planting of agricultural commodities is also prohibited.	Not applicable
<b>CWTE</b> (Converted Wetland Technical Error)	An area converted after December 23, 1985, where the conversion or production of an agricultural commodity was a consequence of an incorrect NRCS determination.	May be used for production of agricultural commodities or forage provided no manipulation is done beyond what existed on the date of the CWTE determination.	May be maintained to the extent that existed on date of the CWTE determination.
<b>FWP</b> (Farmed Wetland Pasture and Hayland)	Manipulated and used for pasture or hay before December 23, 1985 and in most years, is inundated for at least 7 consecutive days or saturated for 14 days during the growing season.	Area may be farmed and maintained as existed before December 23, 1985, as long as area is not abandoned (cessation for five consecutive years of management or maintenance operations related to the use of a farmed wetland).	May be maintained to the extent that existed before December 23, 1985.

## Definitions of Wetland Labels and Uses

Label/Name	Criteria for Determination	Authorized Uses	Authorized Maintenance
<b>FW</b> (Farmed Wetland)	A wetland that was manipulated and planted before December 23, 1985, but still meets inundation or saturation criteria, noted below. If the area is not a pothole, playa, or pocosin, it is inundated for at least 15 consecutive days during the growing season or 10 percent of the growing season, whichever is less, in most years. If the area is a pothole, playa, or pocosin: it is inundated for at least 7 consecutive days or saturated for at least 14 consecutive days during the growing season in most years.	Area may be farmed and maintained as existed before December 23, 1985, as long as area is not abandoned (cessation for five consecutive years of management or maintenance operations related to the use of a farmed wetland).	May be maintained to the extent that existed before December 23, 1985.
<b>MIW</b> (Mitigation Exemption)	A converted wetland, farmed wetland or farmed wetland pasture of which the acreage, functions and values lost have been compensated for through an NRCS-approved mitigation plan.	As stipulated in the mitigation plan/agreement.	As stipulated in the mitigation plan/agreement.
<b>MW</b> (Minimal Effect Exemption)	A converted wetland that is exempt from the wetland conservation provisions of the Food Security Act of 1985, as amended, based on an NRCS determination that the conversion has or will have a minimal effect on the wetlands in the area.	As stipulated in the minimal effect agreement, if applicable.	Only those activities stipulated in the minimal effect agreement, if applicable.
<b>MWM</b> (Mitigation Site)	The site of wetland restoration, enhancement, or creation serving as mitigation for a converted wetland receiving a mitigation exemption.	As stipulated in the mitigation plan/agreement.	As stipulated in the mitigation plan/agreement.
<b>NW</b> (Nonwetland)	An area that does not contain a wetland.	No restrictions.	No restrictions unless manipulation would convert adjacent wetlands.
<b>PC</b> (Prior Converted Cropland)	A wetland converted to cropland before December 23, 1985, and as of December 23, 1985, was capable of being cropped and did not meet farmed wetland inundation or saturation criteria.	No restrictions.	No restrictions unless manipulation would convert adjacent wetlands.
<b>TP</b> (Third Party Exemption)	A wetland converted after December 23, 1985, by a third party who is not associated with the participant, and the conversion is not a result of a scheme or device.	May be used for production of agricultural commodities or forage.	Further drainage improvement will cause ineligibility.
<b>W</b> (Wetland)	An area that meets the criteria for hydric soils, hydrophytic vegetation, and wetland hydrology. Site typically has not been manipulated by altering hydrology and/or removing woody vegetation, including stumps. These areas include FW and FWP that have been abandoned.	May be farmed under natural conditions without drainage or removal of woody vegetation.	Not applicable, as typically wetlands (W) are not manipulated. See NRCS for information if a W is used as a drainage outlet for another wetland.
<b>WX</b> (Wetlands that have been manipulated)	A wetland manipulated after December 23, 1985, but the manipulation was not for the purpose of making production possible and agricultural commodity crop production was not made possible.	Would cause ineligibility if production was later made possible.	No restrictions as long as production not made possible including on an adjacent wetland.

# Certified Wetland Determination Map

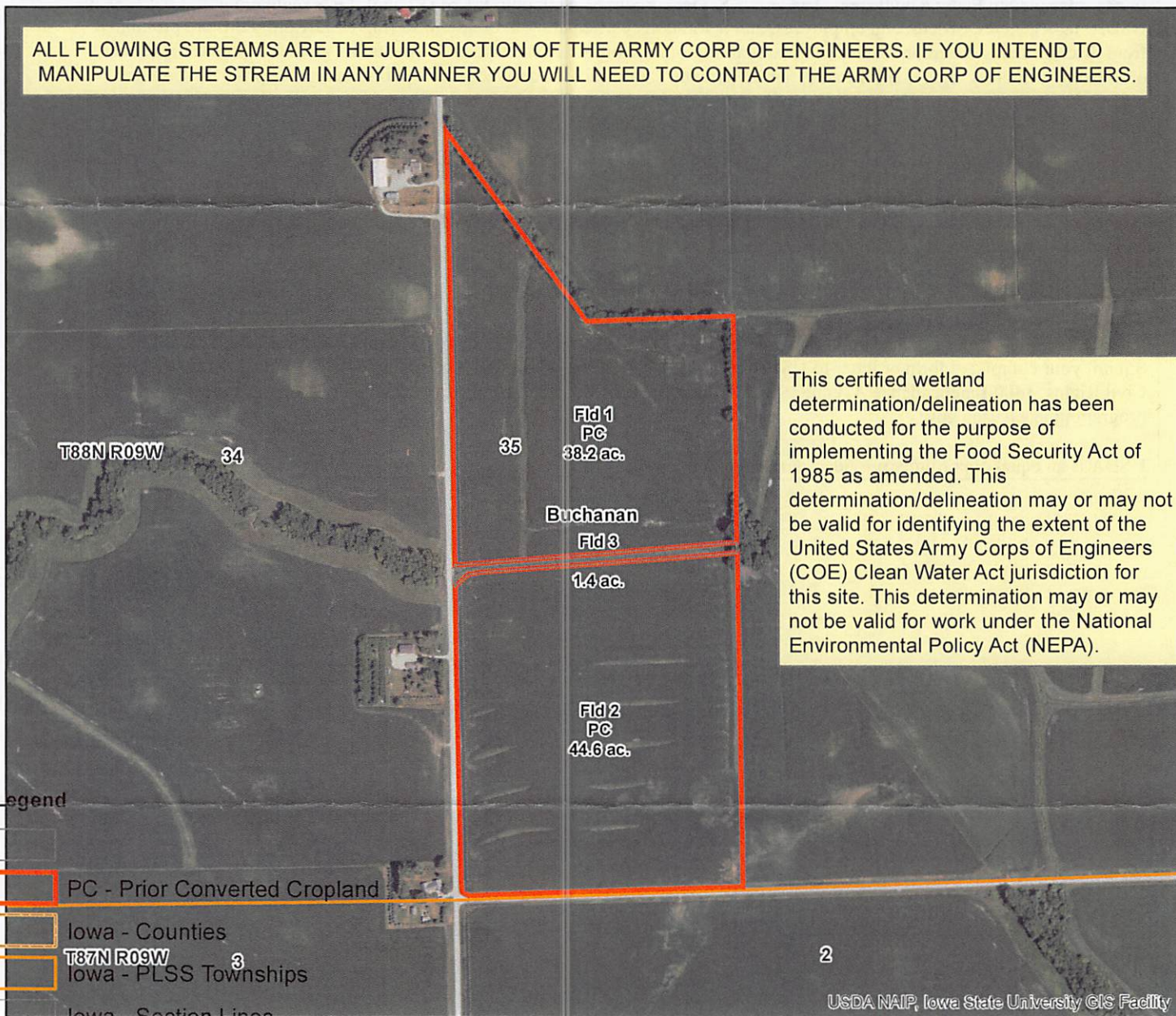
Customer Name: SUMMIT AG FUND III LLP

Farm: 7524 Tract: 823

Administrative Co: BUCHANAN Co, IA  
 Location County: BUCHANAN Co, IA  
 Twp-Range-Sec: T-00N R-00W Sec 00

Agency: USDA-NRCS  
 Map Creation Date: 3/30/2021  
 Certified By: laura.wilden

ALL FLOWING STREAMS ARE THE JURISDICTION OF THE ARMY CORP OF ENGINEERS. IF YOU INTEND TO MANIPULATE THE STREAM IN ANY MANNER YOU WILL NEED TO CONTACT THE ARMY CORP OF ENGINEERS.



This certified wetland determination/delineation has been conducted for the purpose of implementing the Food Security Act of 1985 as amended. This determination/delineation may or may not be valid for identifying the extent of the United States Army Corps of Engineers (COE) Clean Water Act jurisdiction for this site. This determination may or may not be valid for work under the National Environmental Policy Act (NEPA).

Legend

- PC - Prior Converted Cropland
- Iowa - Counties
- Iowa - PLSS Townships
- Iowa - Section Lines

2019 NAIP Natural Color

RGB 0 0.075 0.15 0.3 0.45 0.6 Miles

- Red: Band\_1
- Green: Band\_2
- Blue: Band\_3
- Potential Jurisdictional Waters

