

Land Available

WARREN COUNTY, IA



101.66
Acres M/L

BRYAN BERGDALE | 712.251.8588
Bryan@PeoplesCompany.com

JAKE SICKELS | 515.681.2103
Jake@PeoplesCompany.com

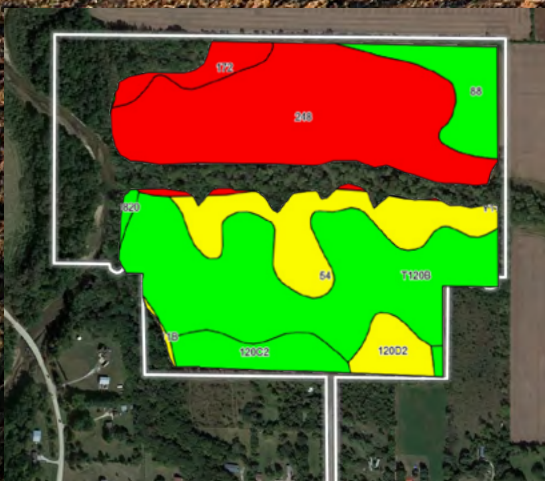
Listing #16913

PC PEOPLES
COMPANY
INTEGRATED LAND SOLUTIONS

Peoples Company is pleased to represent the sale of a unique and mixed-use land offering located just off of pavement and 15 minutes from the Des Moines Metro. The property is located immediately south of Carlisle, Iowa on Cleveland Street with easy access to Highway 5 and Highway 65/69. This property consists of 101.66 secluded acres that could be utilized as a future subdivision site with multiple platted split configurations as well as a high quality tillable farm in a strong farming area.

Of the total acres, 76.36 are FSA certified cropland acres currently in row crop production, carrying a CSR2 value of 68.4. The primary soil types on this tract include top producing Tama silty clay loam carrying a CSR2 value of 95. Improvements include readily available rural water and electric services that are located at the road as well as high-speed internet that is available through multiple providers. Warren Rural Water has a 6" water main that is located on the south side of Cleveland Street. The recreational and hunting capabilities of this tract are strong, given the diversity of cover, Middle River frontage and ample food options that are provided. Middle River is a phenomenal travel corridor for mid-season rut hunting and the opportunity for food plots on the northwest corner, coupled with secluded access from south of the treeline in the middle of the farm, give this property a strong chance to be a great late season hunting farm with minimal effort. This offering is conveniently located in the desired Carlisle Community School District. Please contact one of the listing agents for more information regarding this excellent property.

101.66
Acres M/L



Tillable Soils Map

Code	Soil Description	Acres	% of Field	CSR2 Legend	CSR2
248	Wabash silty clay loam	26.09	34.2%	●	38
T120B	Tama silty clay loam	25.36	33.2%	●	95
54	Zook silty clay loam	9.58	12.5%	●	67
88	Nevin silty Clay loam	5.15	6.7%	●	95
120C2	Tama silty clay loam	4.36	5.7%	●	87
120D2	Tama silty clay loam	2.72	3.6%	●	62
172	Wabash silty clay	2.50	3.3%	●	38
1820	Dockery-Quiver silt loams	0.38	0.5%	●	87
Y11B	Colo, silty clay loams	0.22	0.3%	●	80

Weighted Average: *n 68.4



Directions: From Carlisle, Iowa: Travel south out of town on 165th Place for approximately 1.50 miles and turn left (east) onto Clark Street. Continue around the corner for approximately 0.80 miles and turn left (east) onto Cleveland Street. Continue for approximately 0.30 miles and the property will be located on the north side of the road. The deeded asphalt lane will take you north into the property.

A principal of the selling LLC holds an active real estate license in the State of Iowa.



BRYAN BERGDALE | 712.251.8588

Bryan@PeoplesCompany.com

IA LIC S65377000

JAKE SICKELS | 515.681.2103

Jake@PeoplesCompany.com

IA LIC S67181000

ASKING PRICE: \$1,067,430

Listing #16913





12119 Stratford Drive
Clive, IA 50325



PeoplesCompany.com
Listing #16913



SCAN THE QR CODE TO
THE LEFT WITH YOUR
PHONE CAMERA TO VIEW
THIS LISTING ONLINE!

Land Available

WARREN COUNTY, IA

101.66
Acres M/L

BRYAN BERGDALE | 712.251.8588

Bryan@PeoplesCompany.com

IA LIC S65377000

JAKE SICKELS | 515.681.2103

Jake@PeoplesCompany.com

IA LIC S67181000

