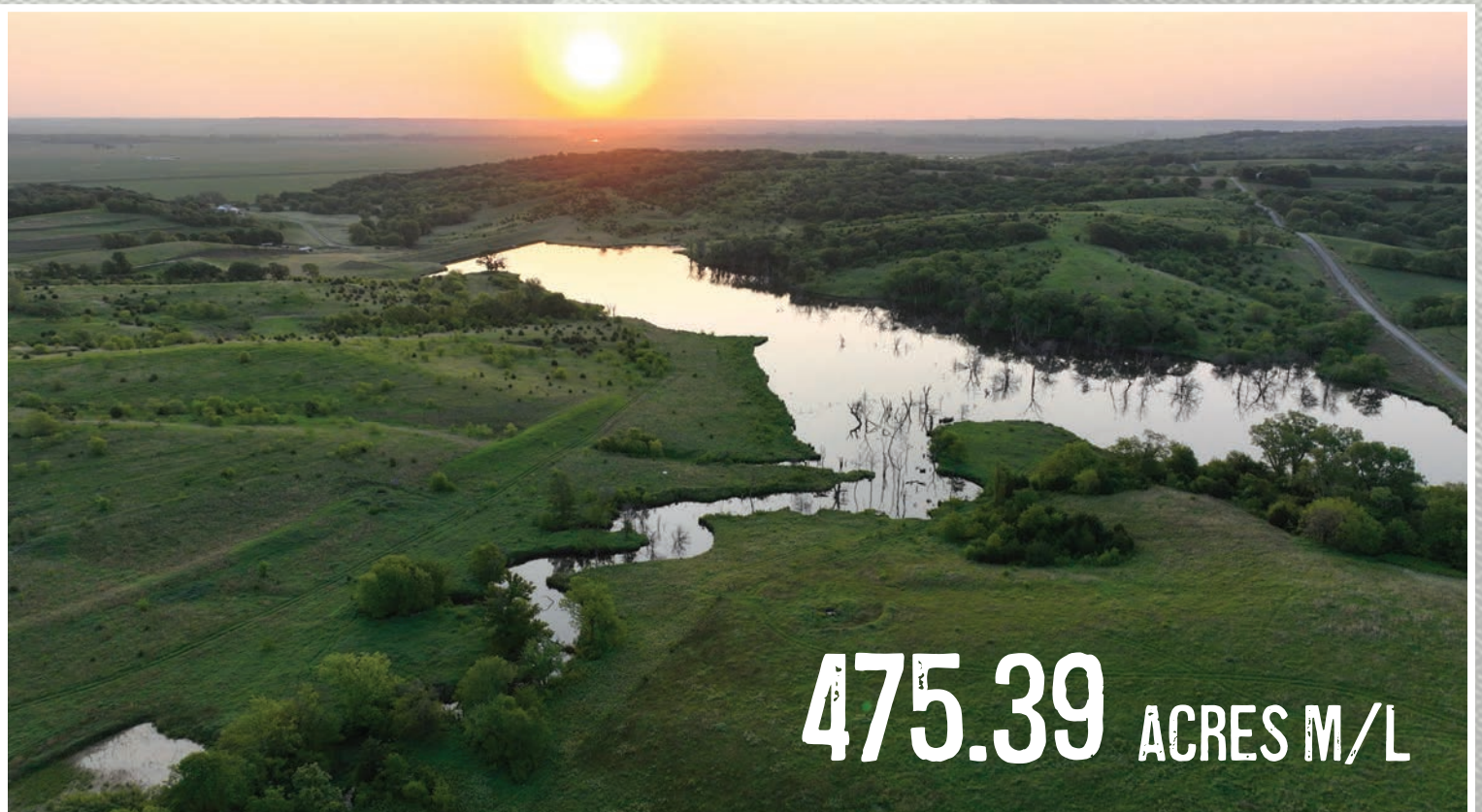


LAND | AVAILABLE

Listing #16917



# NEMAHA COUNTY NEBRASKA



FOR MORE INFO VISIT  
[PEOPLESCOMPANY.COM](http://PEOPLESCOMPANY.COM)

**NIC SMITH**

Cell: 402.210.4194

NE LIC 20180388

[Nic@PeoplesCompany.com](mailto:Nic@PeoplesCompany.com)

**STEVE BRUERE**

Cell: 515.222.1347

NE LIC 20170640

[Steve@PeoplesCompany.com](mailto:Steve@PeoplesCompany.com)

# RECREATIONAL LAND

For Sale

643rd Avenue & 735 A Road | Peru, NE 68421

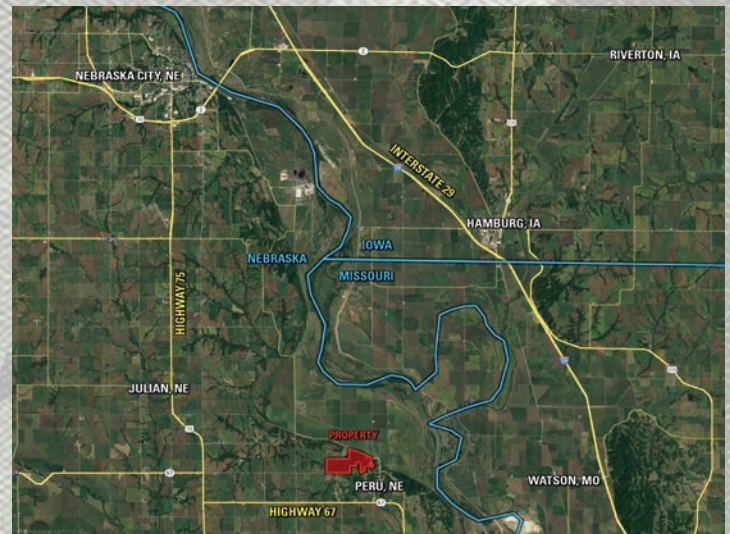
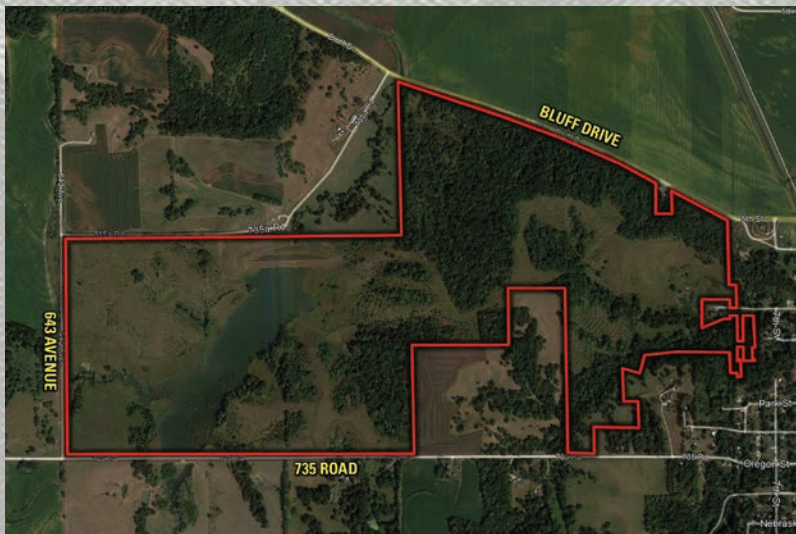
\$2,614,645

## PROPERTY DESCRIPTION

Peoples Company is pleased to offer this high caliber 475.39 m/l acre hunting property in the heart of big whitetail country in southeast Nebraska. This secluded property offers a diverse combination of pasture, timber, and a large pond just an hour south of Omaha. Located on the west side of Peru, Nebraska, this farm is home to all types of wildlife including whitetail deer, geese, ducks, turkey, pheasant, fox, coyotes, and bobcat. Situated in the Missouri River corridor, this is located in an area especially known for its ability to grow mature whitetails.

In addition to world class hunting, the farm offers something for everyone with nearly 5 miles of internal trails navigable by ATV or by foot with an endless supply of amazing views. The 35 acre pond has been stocked with largemouth bass, crappie, and bluegill. The damn and spillway are maintained by the Nemaha Natural Resources District. The topography and views of the pond would make an incredible building site for a secluded home or a cabin. Used as pasture ground in the past, the property has perimeter fences in good condition.

Whether you are an outdoor enthusiast, hobby farmer, land speculator, or just looking for a playground close to the metro, don't miss this once in a lifetime opportunity!



**NIC SMITH**

Cell: 402.210.4194

NE LIC 20180388

Nic@PeoplesCompany.com

**STEVE BRUERE**

Cell: 515.222.1347

NE LIC 20170640

Steve@PeoplesCompany.com