



United States  
Department of  
Agriculture

# Clinton County, Iowa



**Legend**

- Non-Cropland
- Cropland
- CRP
- Tract Boundary

- Iowa PLSS
- Iowa Roads

**Wetland Determination Identifiers**

- Restricted Use
- Limited Restrictions
- Exempt from Conservation Compliance Provisions

**NAIP/USDA\_CONUS\_PRIME**

- RGB**
- Red: Band\_1
  - Green: Band\_2
  - Blue: Band\_3

**Tract Cropland Total: 200.54 acres**

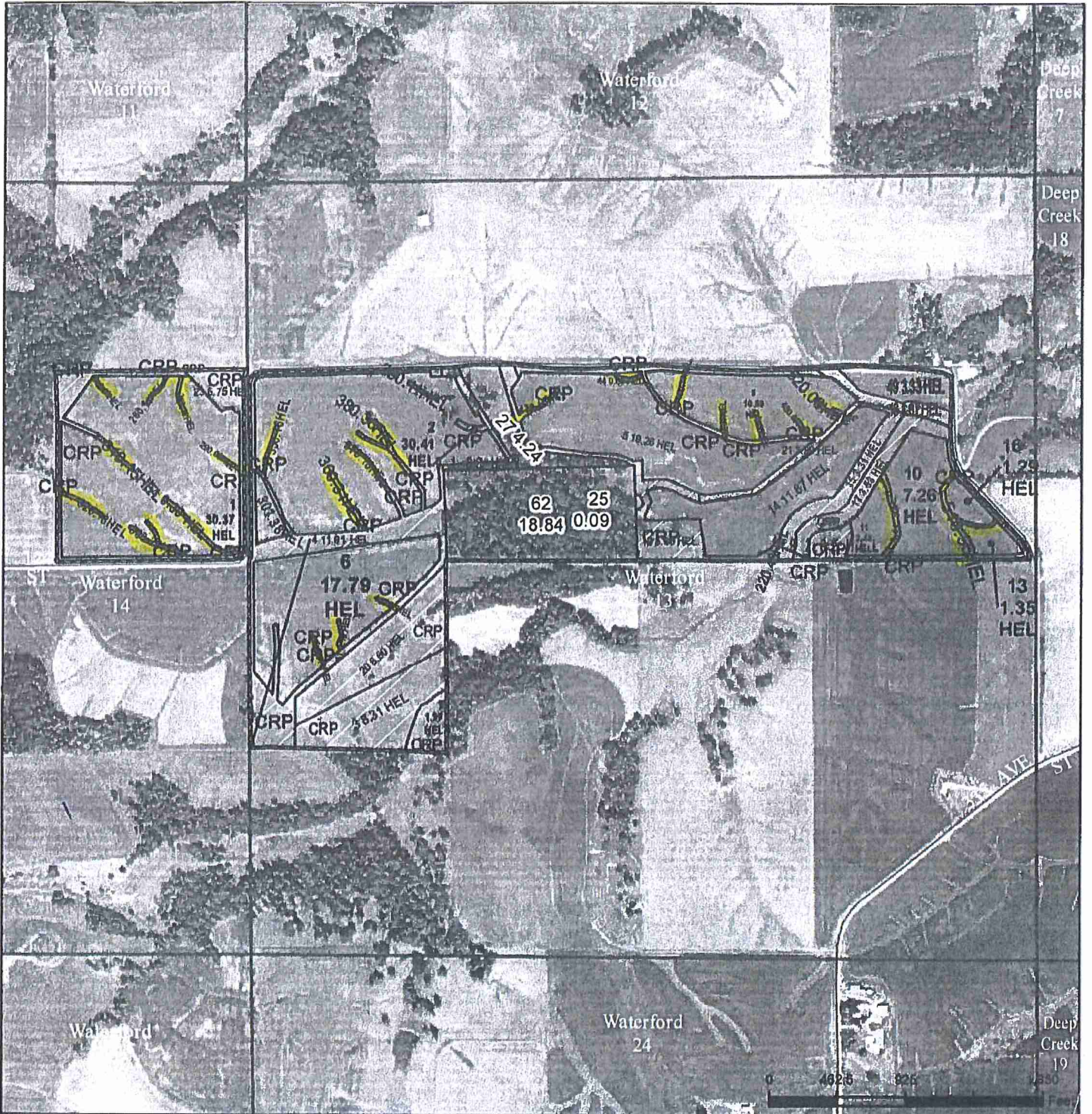
**2022 Program Year**

Map Created April 22, 2022

**Farm 5721**  
**Tract 11224**

United States Department of Agriculture (USDA) Farm Service Agency (FSA) maps are for FSA Program administration only. This map does not represent a legal survey or reflect actual ownership; rather it depicts the information provided directly from the producer and/or National Agricultural Imagery Program (NAIP) imagery. The producer accepts the data 'as is' and assumes all risks associated with its use. USDA-FSA assumes no responsibility for actual or consequential damage incurred as a result of any user's reliance on this data outside FSA Programs. Wetland identifiers do not represent the size, shape, or specific determination of the area. Refer to your original determination (CPA-026 and attached maps) for exact boundaries and determinations or contact USDA Natural Resources Conservation Service (NRCS).

USDA is an equal opportunity provider, employer, and lender.



- Legend**
- Non-Cropland
  - CRP
  - Iowa PLSS
  - Cropland
  - Tract Boundary
  - Iowa Roads

**Wetland Determination Identifiers**

- Restricted Use
- ▽ Limited Restrictions
- Exempt from Conservation Provisions

Cont. # 11389

Tract Cropland Total: 200.55 acres

2019 Program Year  
 Map Created April 17, 2019  
**Farm 5721**  
**Tract 11224**

United States Department of Agriculture (USDA) Farm Service Agency (FSA) maps are for FSA Program administration only. This map does not represent a legal survey or reflect actual ownership; rather it depicts the information provided directly from the producer and/or National Agricultural Imagery Program (NAIP) imagery. The producer accepts the data 'as is' and assumes all risks associated with its use. USDA-FSA assumes no responsibility for actual or consequential damage incurred as a result of any user's reliance on this data outside FSA Programs. Wetland identifiers do not represent the size, shape, or specific determination of the area. Refer to your original determination (CPA-026 and attached maps) for exact boundaries and determinations or contact USDA Natural Resources Conservation Service (NRCS).