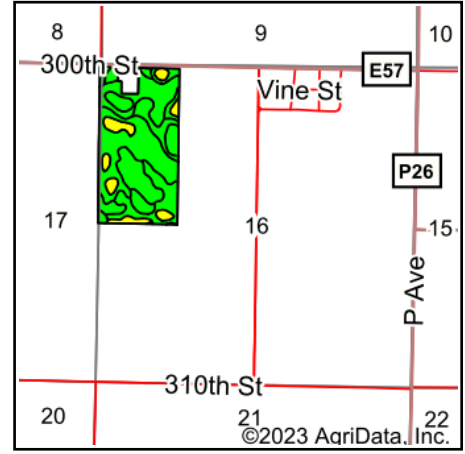
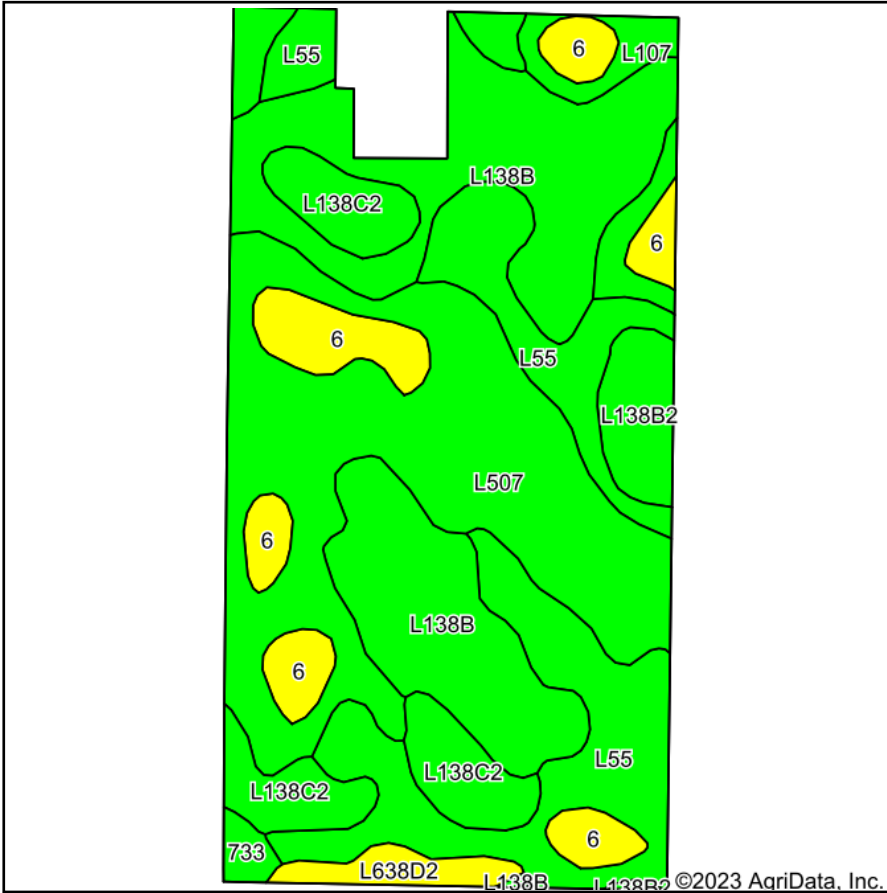


Tillable Soils Map



State: **Iowa**
 County: **Greene**
 Location: **16-82N-30W**
 Township: **Franklin**
 Acres: **75.53**
 Date: **6/1/2023**



Maps Provided By:



Soils data provided by USDA and NRCS.

Area Symbol: IA073, Soil Area Version: 28

Code	Soil Description	Acres	Percent of field	CSR2 Legend	Non-Irr Class *c	*i Corn Bu	*j Soybeans Bu	CSR2**	CSR	*n NCCPI Overall	
L507	Canisteo clay loam, Bemis moraine, 0 to 2 percent slopes	20.65	27.3%		Ilw	0.0	0.0	87		81	
L138B	Clarion loam, Bemis moraine, 2 to 6 percent slopes	19.32	25.6%		Ile	220.8	64.0	88		79	
L55	Nicollet loam, 1 to 3 percent slopes	15.62	20.7%		Ie	0.0	0.0	91		84	
6	Okoboji silty clay loam, 0 to 1 percent slopes	6.19	8.2%		Illw	185.6	53.8	59	58	76	
L138C2	Clarion loam, Bemis moraine, 6 to 10 percent slopes, moderately eroded	6.15	8.1%		IIIe	0.0	0.0	83		65	
L107	Webster clay loam, Bemis moraine, 0 to 2 percent slopes	3.25	4.3%		Ilw	0.0	0.0	88		84	
L138B2	Clarion loam, Bemis moraine, 2 to 6 percent slopes, moderately eroded	2.38	3.2%		Ile	0.0	0.0	85		70	
L638D2	Omsrud-Storden complex, Bemis moraine, 10 to 16 percent slopes, moderately eroded	1.37	1.8%		IVe	0.0	0.0	53		66	
733	Calco silty clay loam, 0 to 2 percent slopes, occasionally flooded	0.60	0.8%		Ilw	204.8	59.4	78	76	88	
Weighted Average						1.99	73.3	21.3	84.8	*	*n 79

**IA has updated the CSR values for each county to CSR2.

*- CSR weighted average cannot be calculated on the current soils data, use prior data version for csr values.

*i Yield data provided by the ISPAID Database version 8.1.1 developed by IA State University.

*n: The aggregation method is "Weighted Average using all components"

*c: Using Capabilities Class Dominant Condition Aggregation Method

Soils data provided by USDA and NRCS.