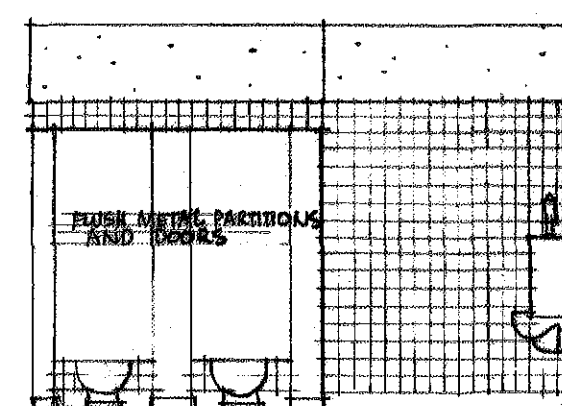
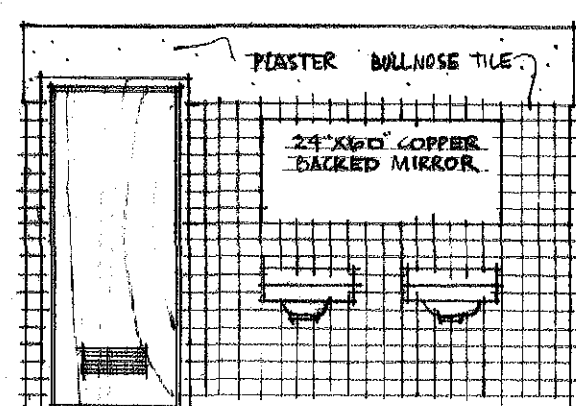


IOWA STATE HIGHWAY COMMISSION

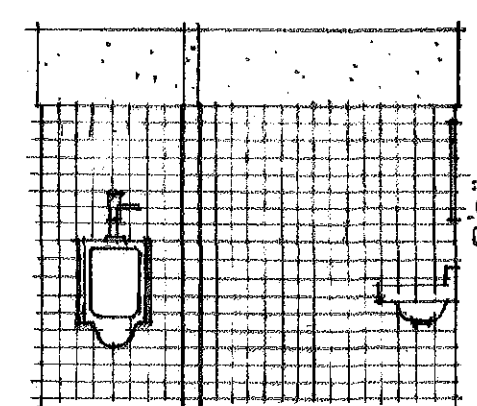
ENTRANCE LETTERING
SCALE 1/4"=1'-0"



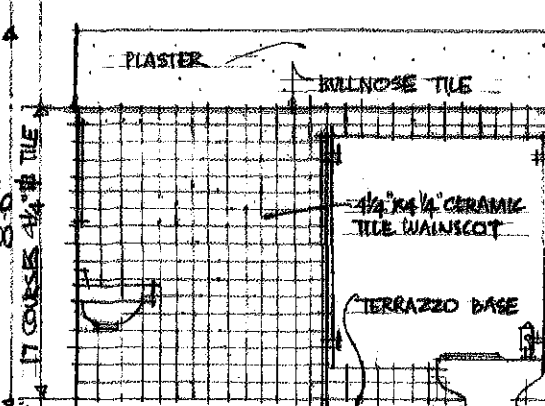
LOOKING SOUTH
ELEVATION MEN'S TOILET
SCALE 1/4"=1'-0"



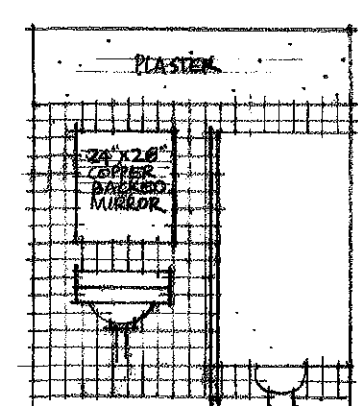
LOOKING NORTH



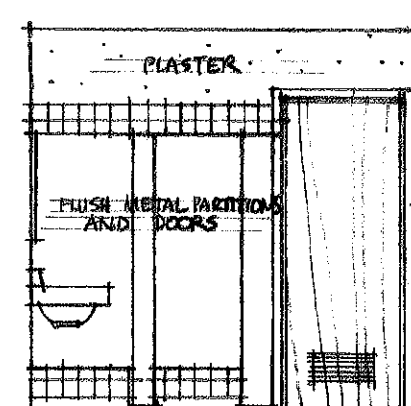
LOOKING WEST



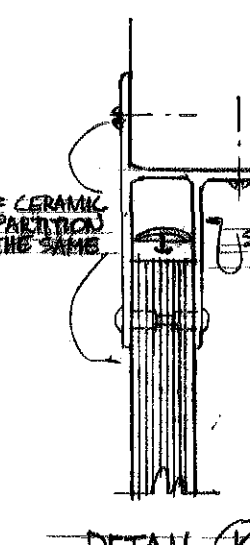
LOOKING EAST



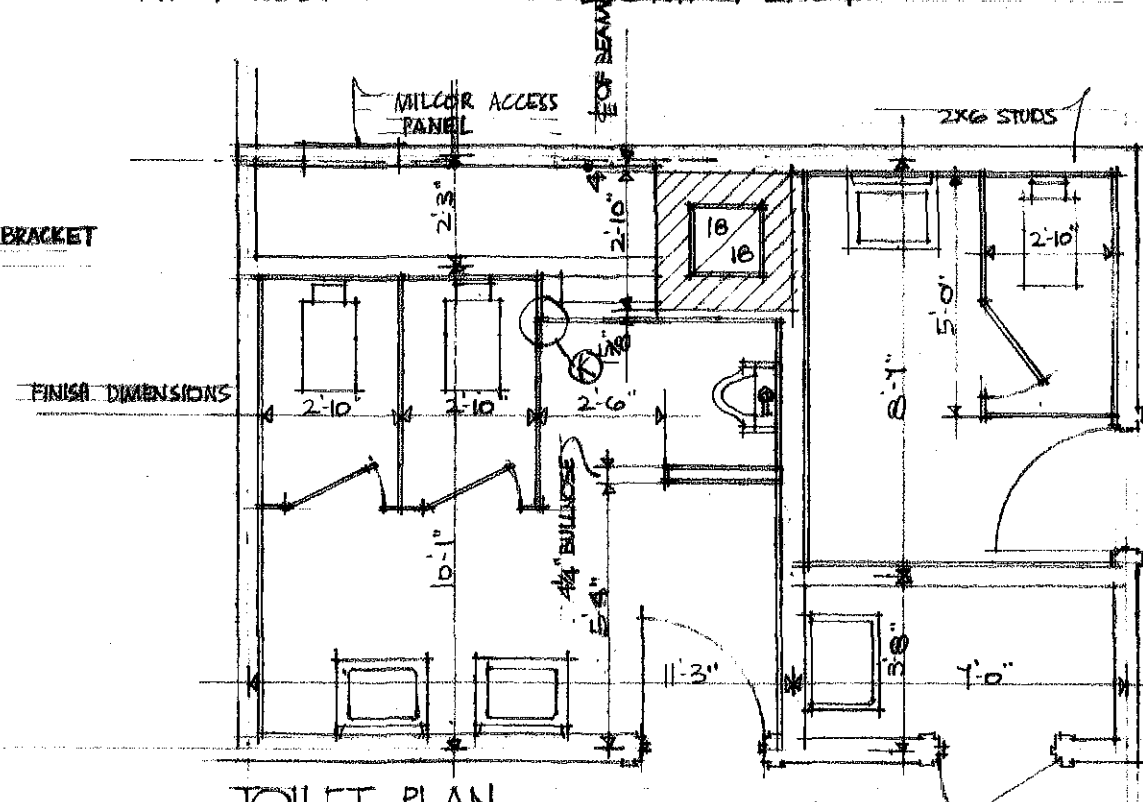
LOOKING SOUTH
ELEVATION WOMEN'S TOILET
SCALE 1/4"=1'-0"



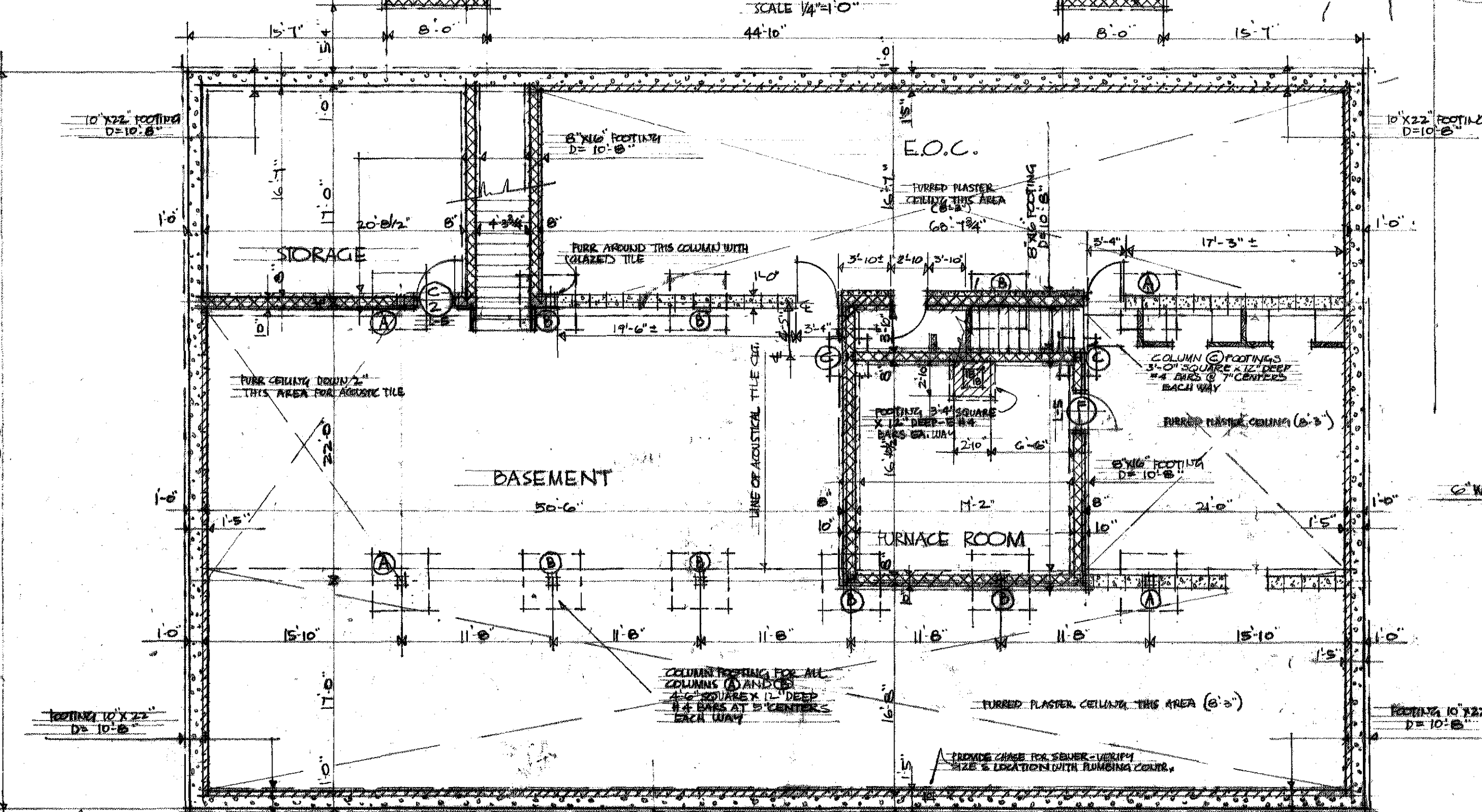
LOOKING WEST



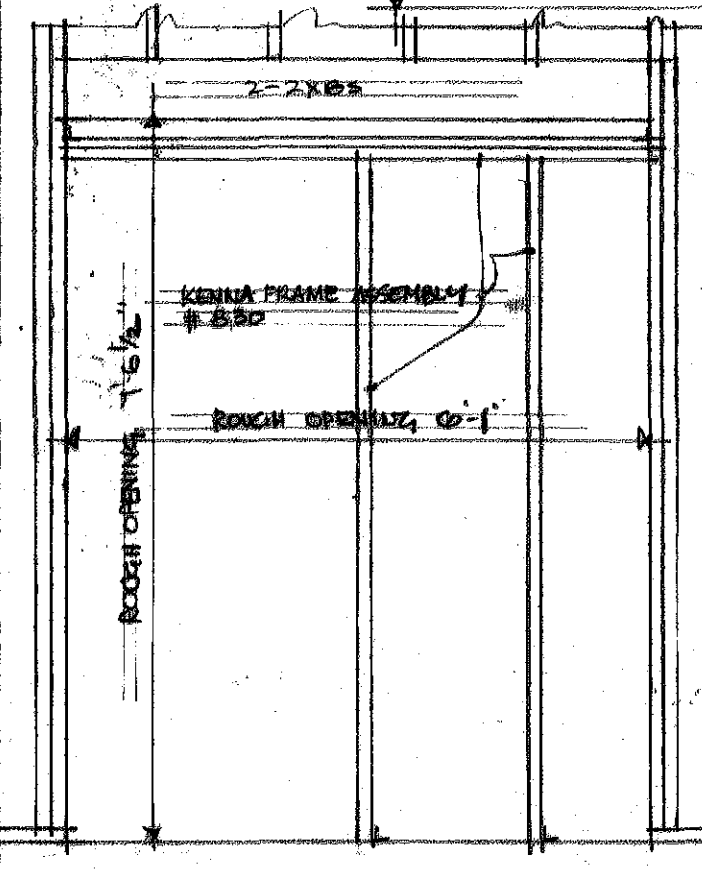
DETAIL (K)
1/2" SCALE



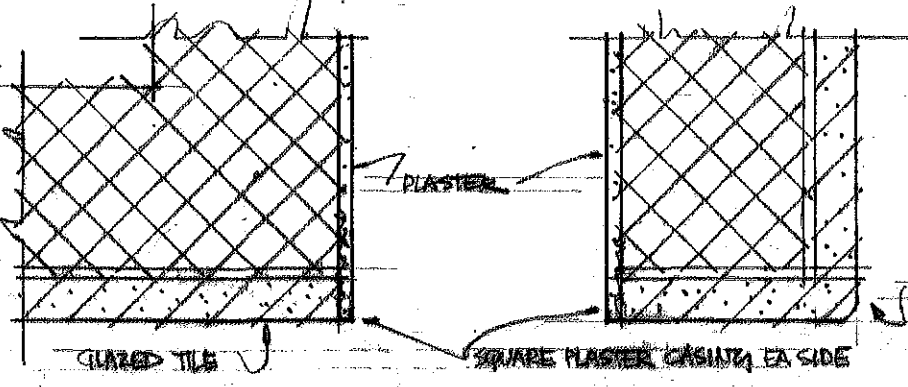
TOILET PLAN
SCALE 1/4"=1'-0"



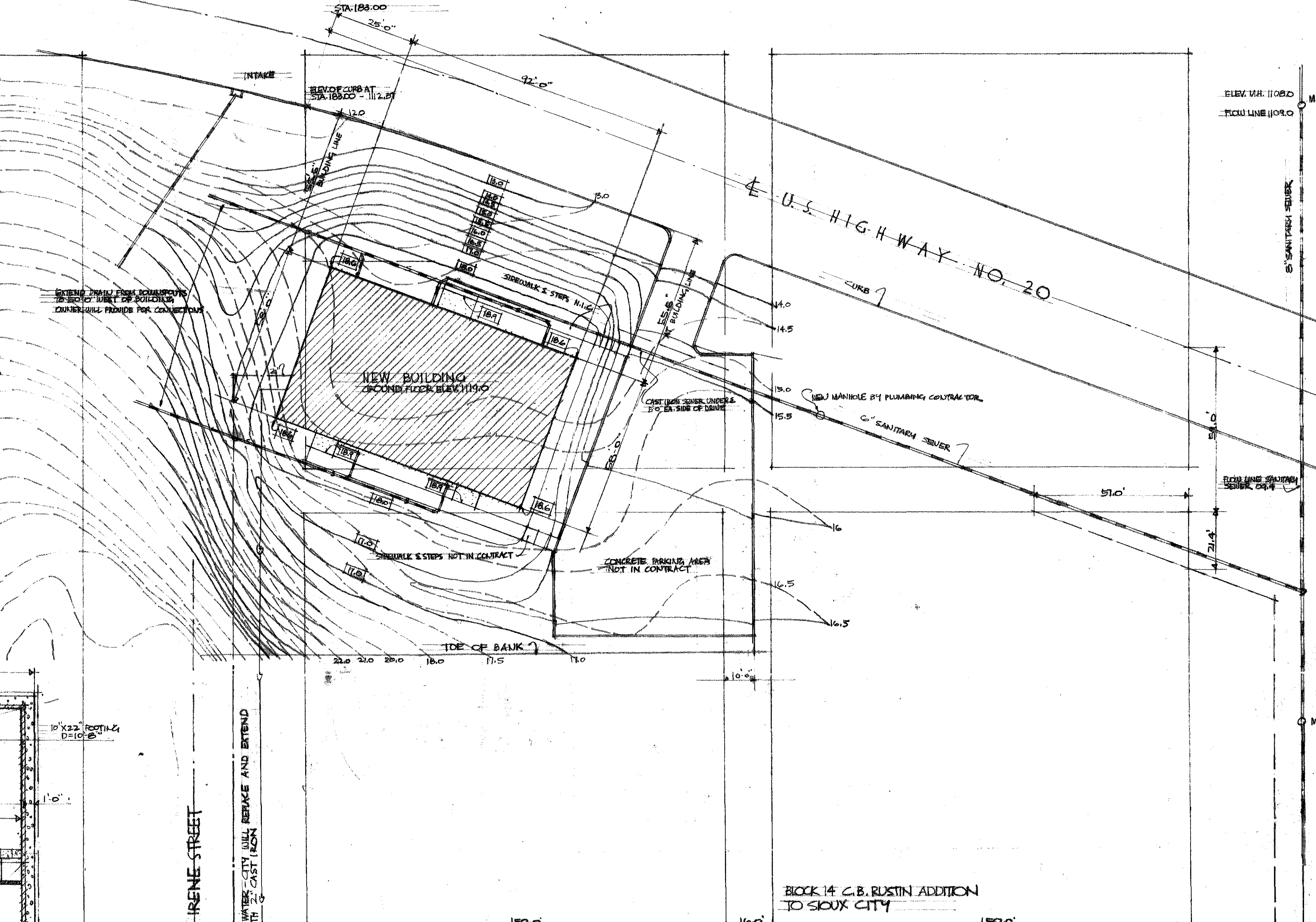
BASEMENT FLOOR PLAN & FOOTINGS
SCALE 1/8"=1'-0"



SLIDING DOOR OPENING
SCALE 1/2"=1'-0"

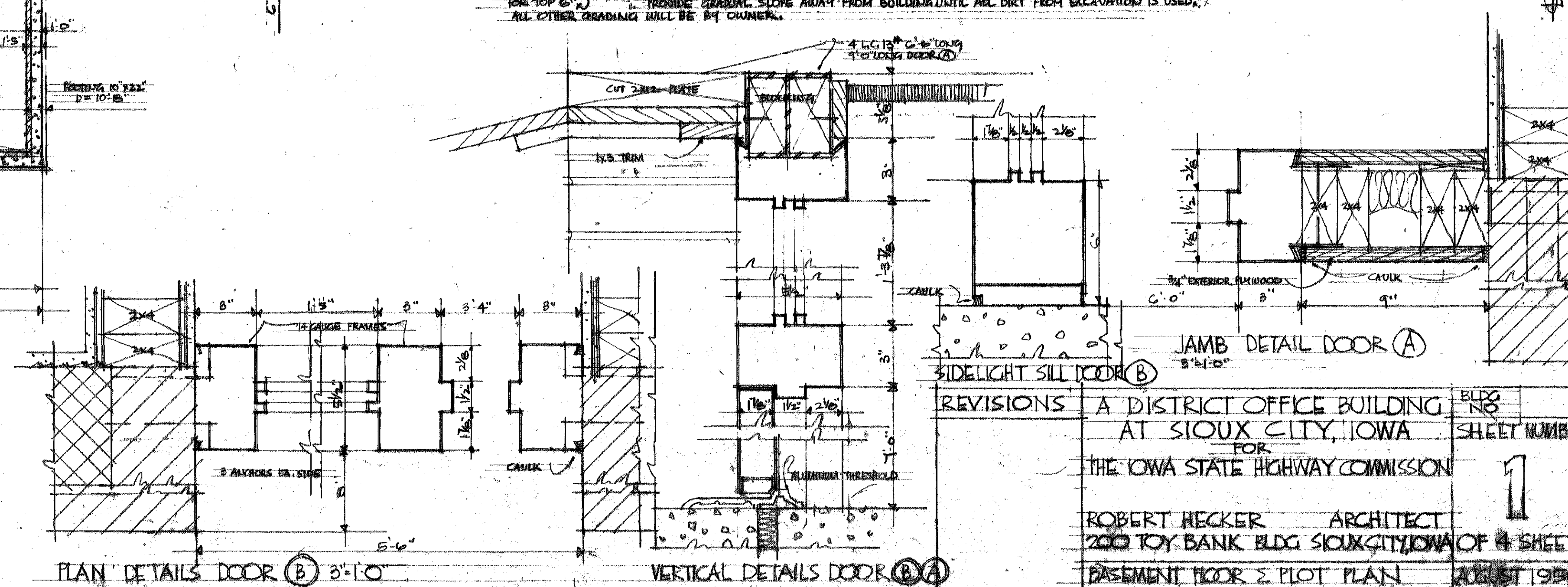


JAMB OF STAIRS AT BASEMENT
SCALE 1/2"=1'-0"



PLOT PLAN 1"=25'

NOTE: CONTRACTOR SHALL USE DIRT FROM EXCAVATION FOR FILL AROUND BUILDING. FINISH GRADE SHALL BE AS SHOWN. OWNER WILL PROVIDE AND GRADE BACK DIRT FOR TOP 6". PROVIDE GRADING SLOPE AWAY FROM BUILDING UNTIL ALL DIRT FROM EXCAVATION IS USED. ALL OTHER GRADING WILL BE BY OWNER.

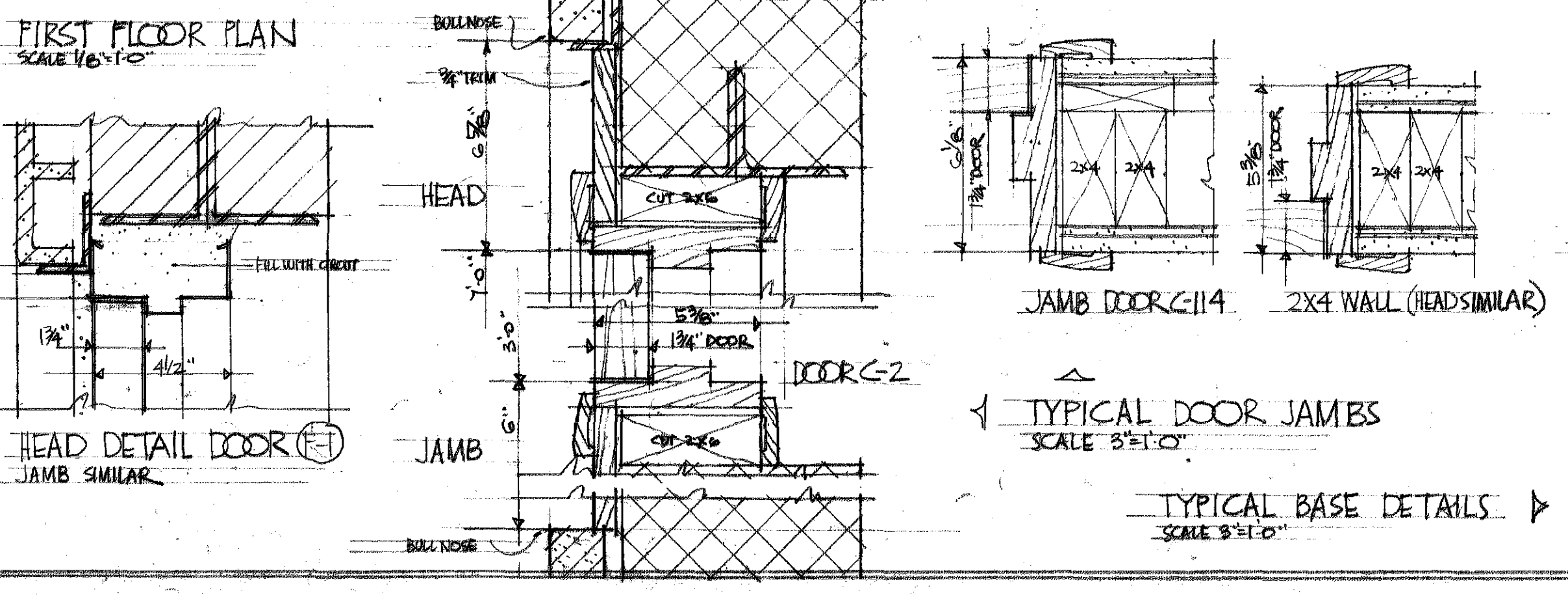
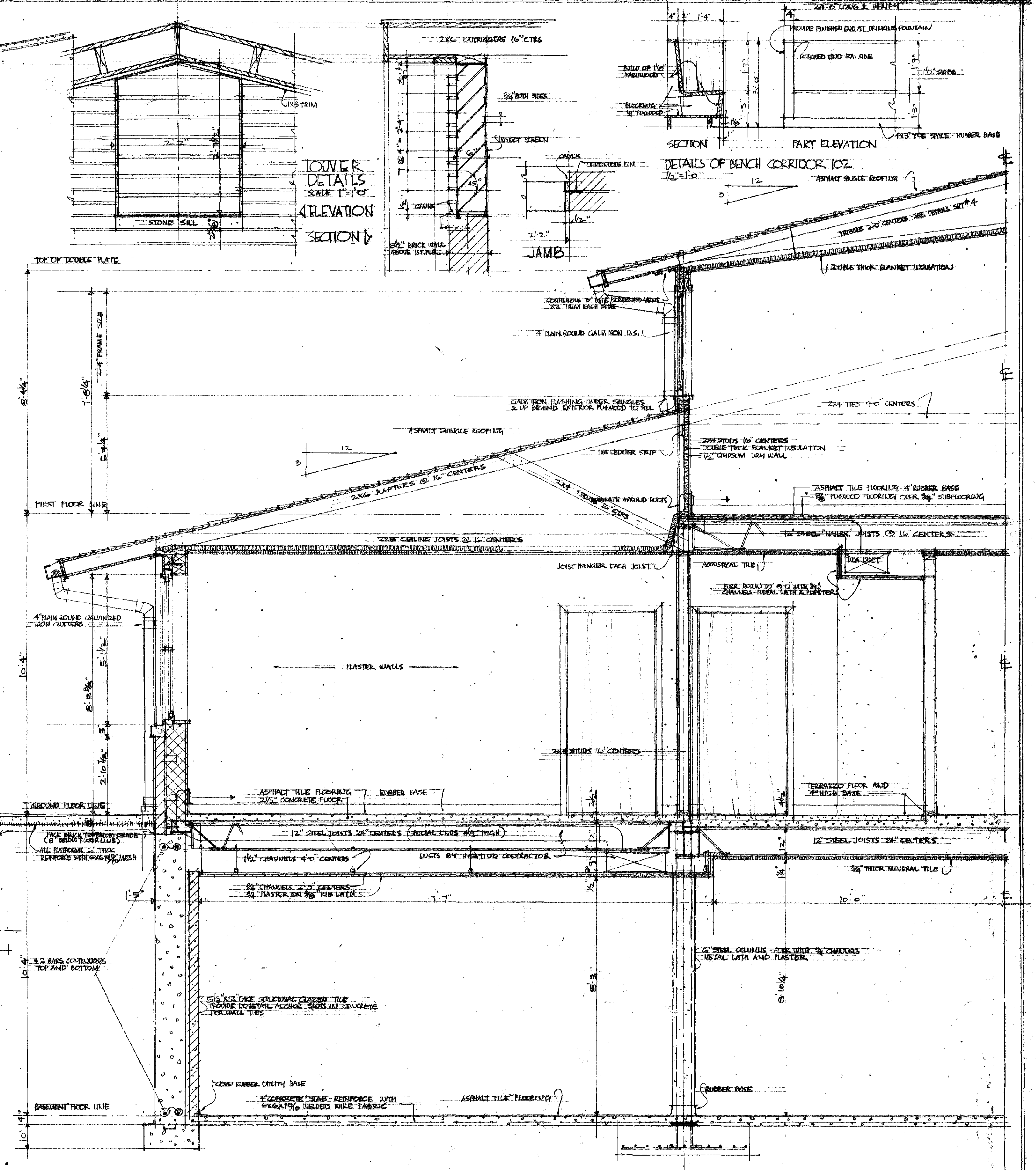
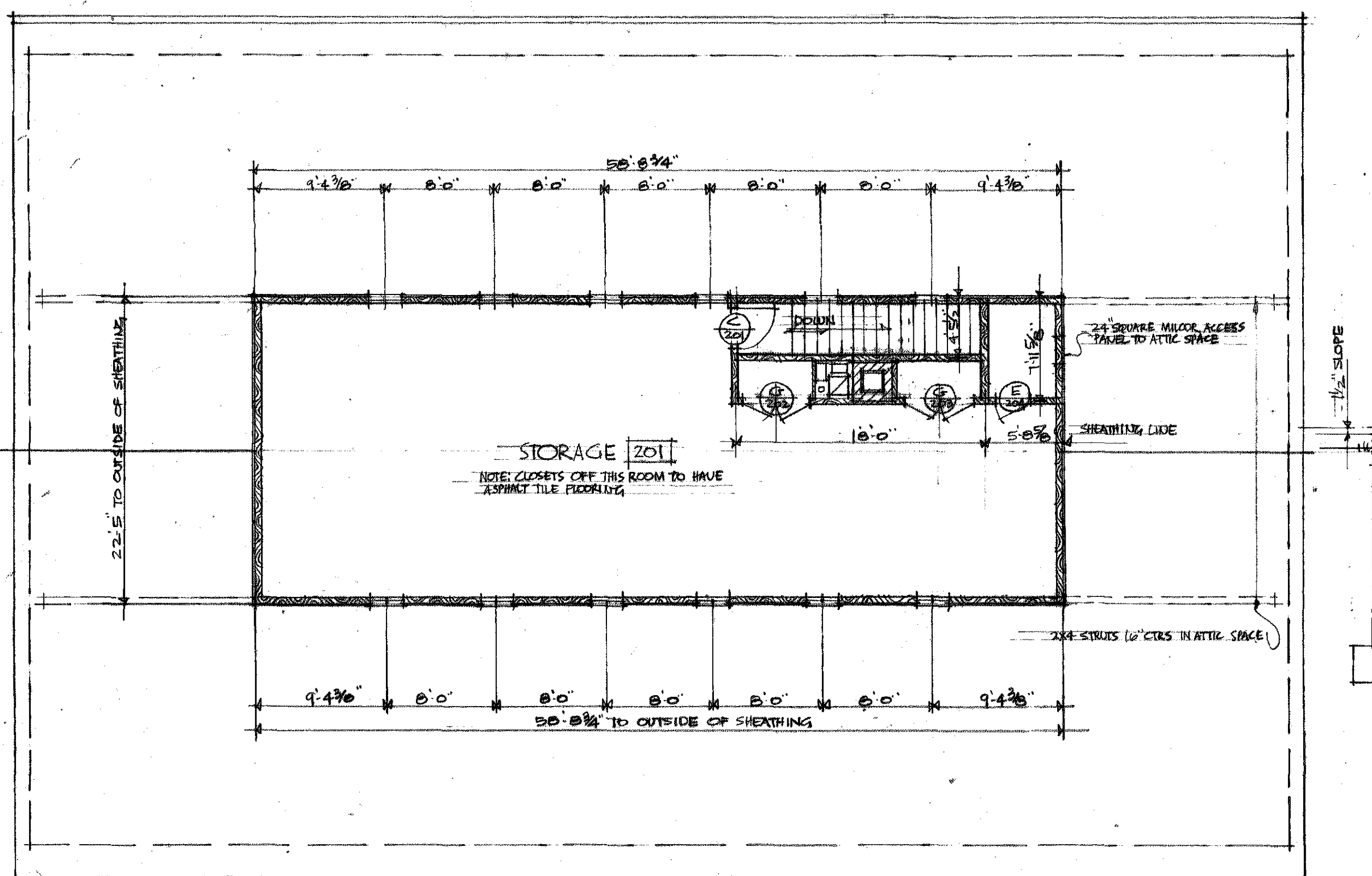
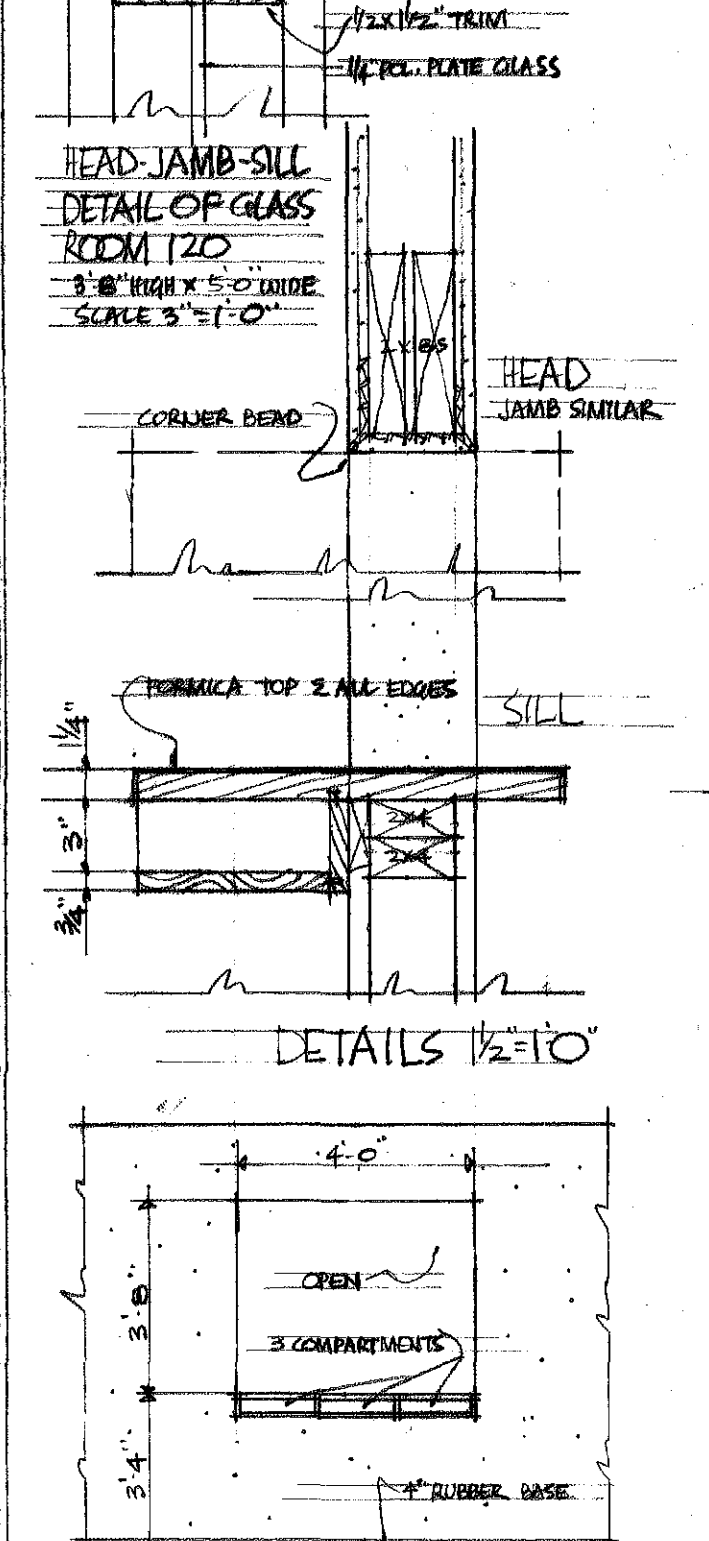
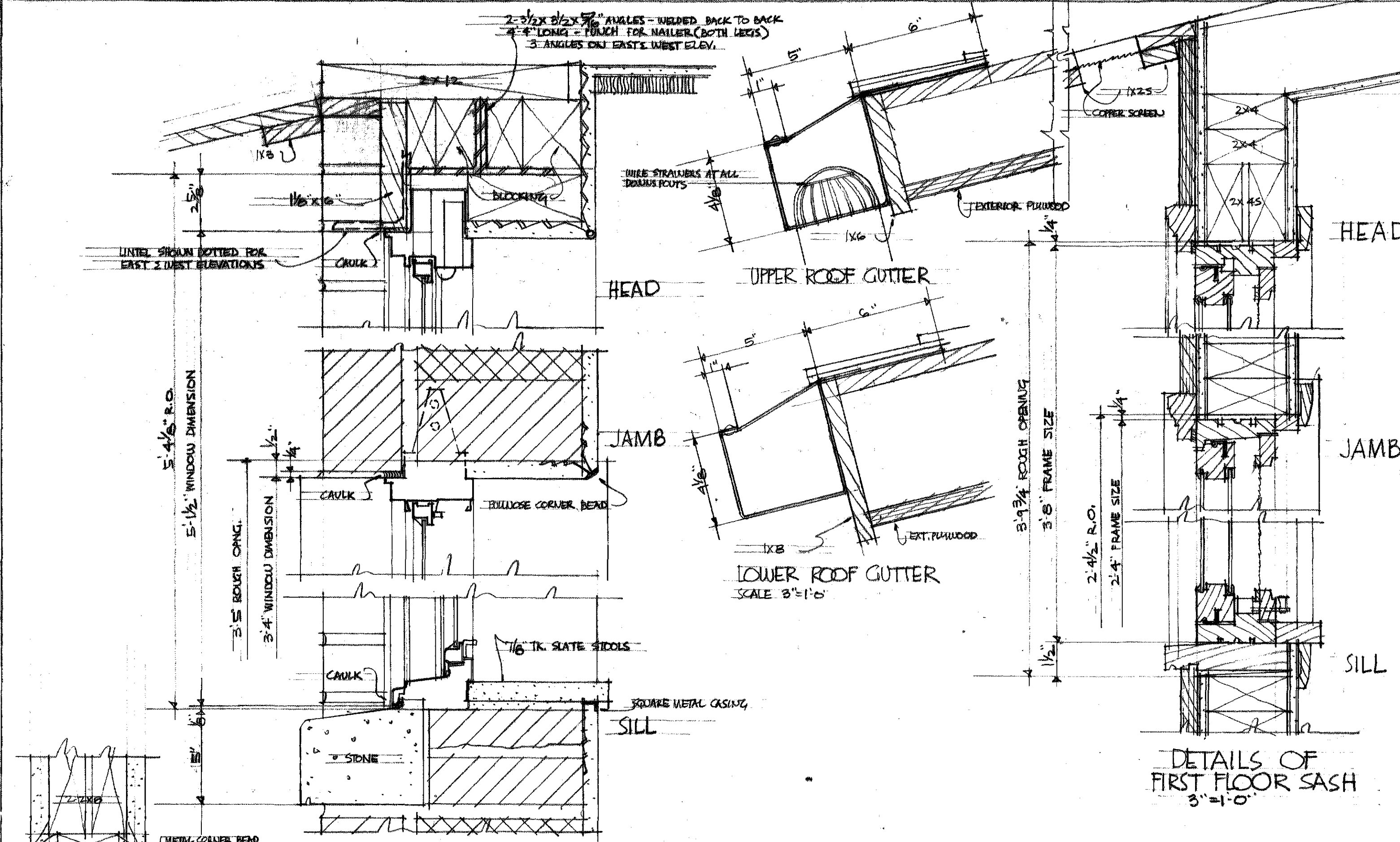
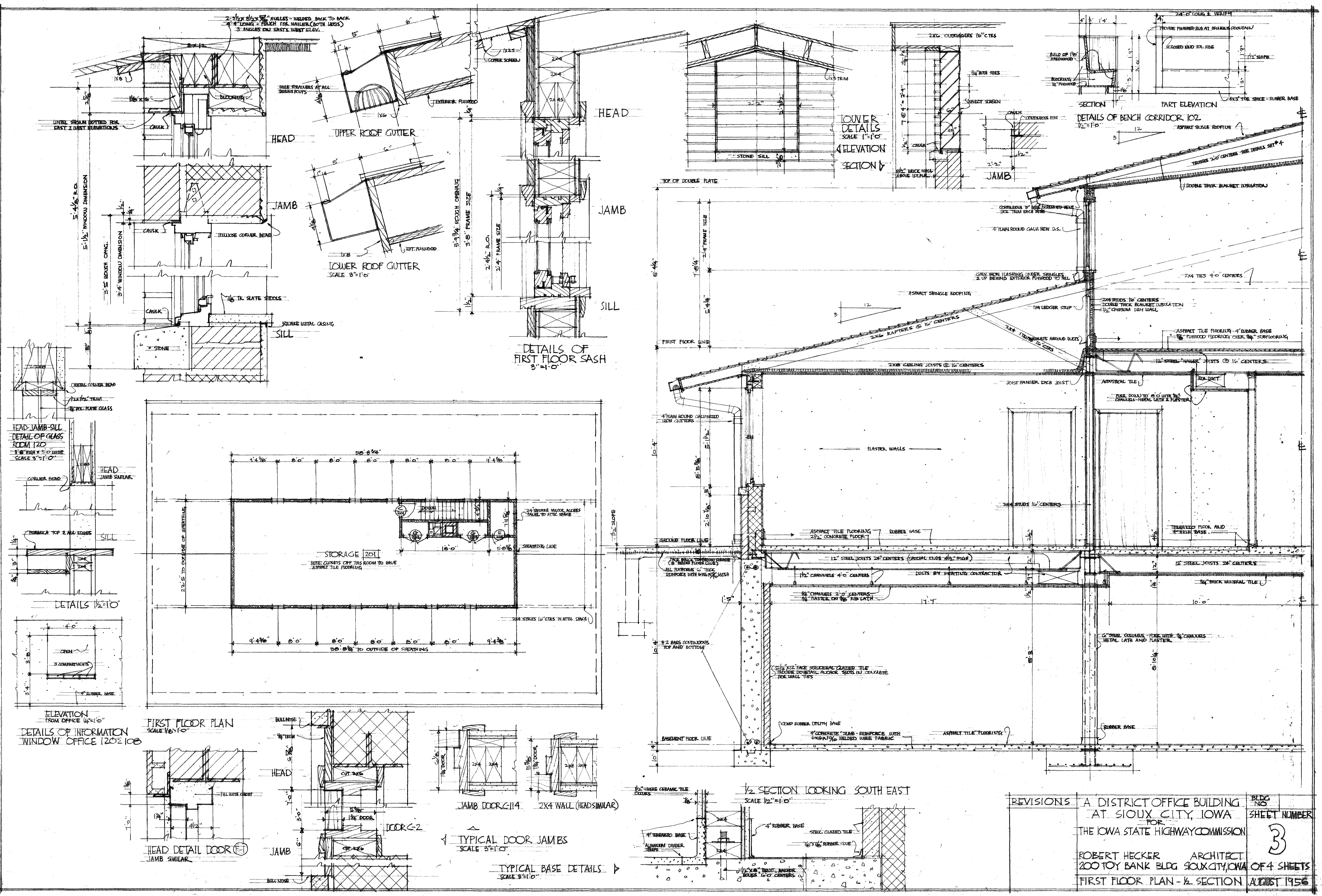


PLAN DETAILS DOOR (B) 3/4"=1'-0"

VERTICAL DETAILS DOOR (A) 3/4"=1'-0"

JAMB DETAIL DOOR (A)
SIDELIGHT SILL DOOR (B)
REVISIONS: A DISTRICT OFFICE BUILDING AT SIOUX CITY, IOWA FOR THE IOWA STATE HIGHWAY COMMISSION
ROBERT HECKER ARCHITECT
200 TOY BANK BLDG SIOUX CITY, IOWA
BASEMENT FLOOR & PLOT PLAN
AUGUST 1936

Handwritten signature and initials.



| | | |
|-----------|---|--------------|
| REVISIONS | A DISTRICT OFFICE BUILDING AT SIOUX CITY, IOWA FOR THE IOWA STATE HIGHWAY COMMISSION | BLDG NO |
| | | SHEET NUMBER |
| | | 3 |
| | ROBERT HECKER ARCHITECT 200 TOY BANK BLDG SIOUX CITY, IOWA | OF 4 SHEETS |
| | FIRST FLOOR PLAN - 1/2 SECTION | AUGUST 1956 |

CHECK 8W24

