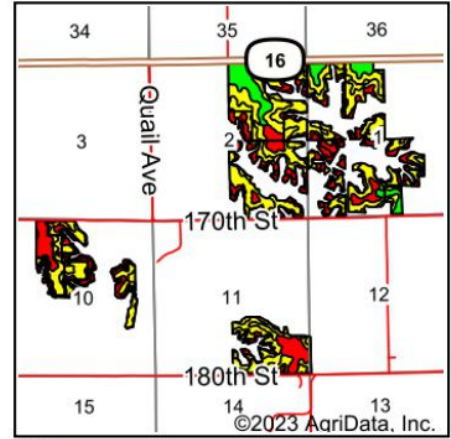
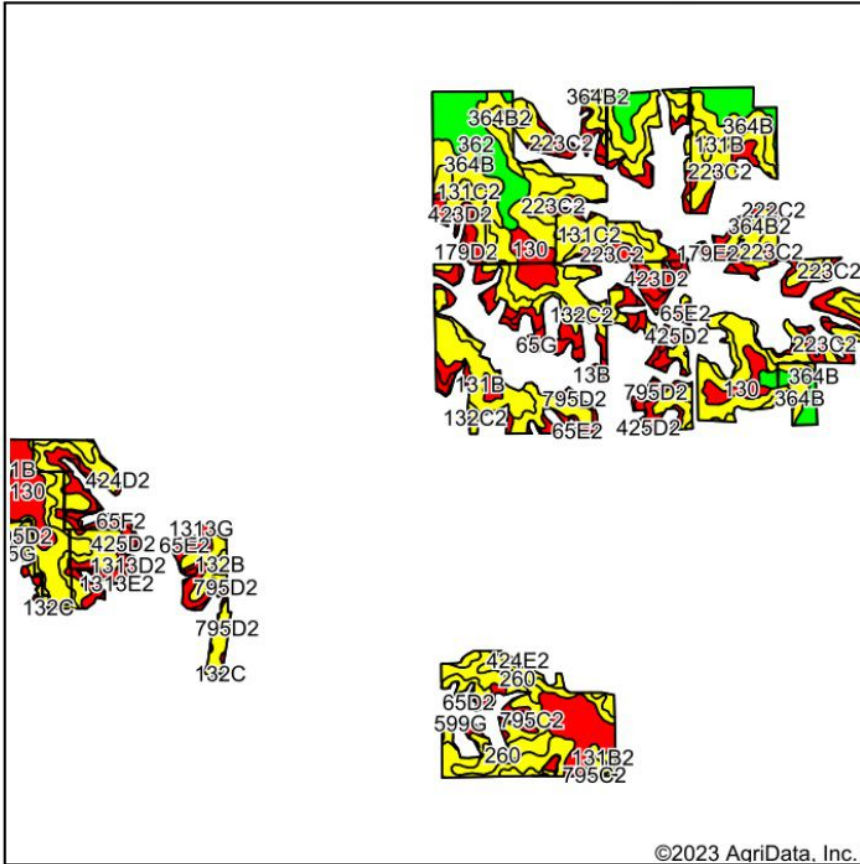


# FSA Cropland Soils Map



State: **Iowa**  
 County: **Van Buren**  
 Location: **2-69N-9W**  
 Township: **Washington**  
 Acres: **606.66**  
 Date: **7/13/2023**



Maps Provided By:



© AgriData, Inc. 2023

www.AgriDataInc.com



Soils data provided by USDA and NRCS.

©2023 AgriData, Inc.

Area Symbol: IA177, Soil Area Version: 30

Code	Soil Description	Acres	Percent of field	CSR2 Legend	CSR2**	CSR
131C2	Pershing silty clay loam, 5 to 9 percent slopes, moderately eroded	96.60	15.9%		62	45
131B	Pershing silt loam, 2 to 5 percent slopes	76.84	12.7%		70	67
132C2	Weller silty clay loam, 5 to 9 percent slopes, moderately eroded	69.81	11.5%		59	40
130	Belinda silt loam, 0 to 2 percent slopes	53.69	8.9%		47	63
362	Haig silt loam, 0 to 2 percent slopes	49.18	8.1%		83	70
364B	Grundy silty clay loam, 2 to 5 percent slopes	44.11	7.3%		72	75
132B	Weller silt loam, 2 to 5 percent slopes	43.13	7.1%		67	60
423D2	Bucknell silty clay loam, 9 to 14 percent slopes, moderately eroded	36.33	6.0%		6	13
795D2	Ashgrove silty clay loam, 9 to 14 percent slopes, moderately eroded	25.34	4.2%		7	8
223C2	Rinda silty clay loam, 5 to 9 percent slopes, moderately eroded	24.83	4.1%		45	22
65E2	Lindley loam, 14 to 18 percent slopes, moderately eroded	15.05	2.5%		29	28
425D2	Keswick clay loam, 9 to 14 percent slopes, moderately eroded	12.36	2.0%		8	12
260	Beckwith silt loam, 0 to 2 percent slopes	11.68	1.9%		51	57
364B2	Grundy silty clay loam, 2 to 5 percent slopes, moderately eroded	9.01	1.5%		70	70
23C2	Arispe silty clay loam, 5 to 9 percent slopes, moderately eroded	8.02	1.3%		62	50
65D2	Lindley loam, 9 to 14 percent slopes, moderately eroded	7.05	1.2%		37	38
795C2	Ashgrove silty clay loam, 5 to 9 percent slopes, moderately eroded	4.93	0.8%		7	20
432D2	Gorin silty clay loam, 9 to 14 percent slopes, moderately eroded	3.91	0.6%		40	26
131B2	Pershing silty clay loam, 2 to 5 percent slopes, moderately eroded	2.07	0.3%		68	63
13B	Olmitz-Vesser-Zook complex, 0 to 5 percent slopes	1.89	0.3%		74	60
65G	Lindley loam, 25 to 40 percent slopes	1.81	0.3%		7	5
1313D2	Munterville silty clay loam, 9 to 14 percent slopes, moderately eroded	1.60	0.3%		34	10
179D2	Gara clay loam, 9 to 14 percent slopes, moderately eroded	1.46	0.2%		48	43

Soils data provided by USDA and NRCS.

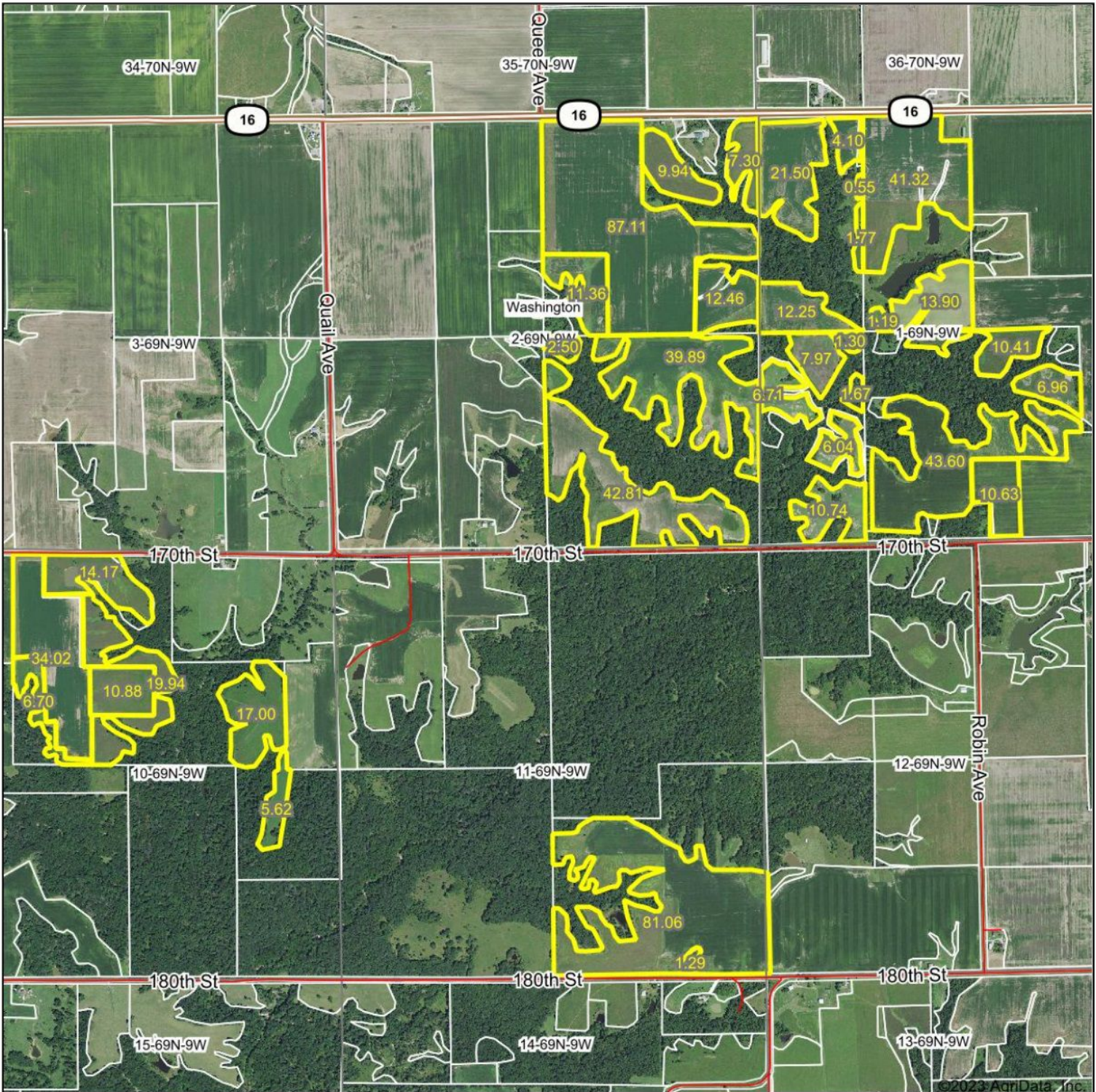


Code	Soil Description	Acres	Percent of field	CSR2 Legend	CSR2**	CSR
132C	Weller silt loam, 5 to 9 percent slopes	1.43	0.2%		59	44
65F2	Lindley loam, 18 to 25 percent slopes, moderately eroded	1.10	0.2%		10	8
W	Water	0.82	0.1%		0	0
179E2	Gara clay loam, 14 to 18 percent slopes, moderately eroded	0.79	0.1%		23	33
424D2	Lindley-Keswick loams, 9 to 14 percent slopes, moderately eroded	0.65	0.1%		27	15
599G	Nordness-Munterville complex, 25 to 40 percent slopes	0.46	0.1%		5	5
222C2	Clarinda silty clay loam, 5 to 9 percent slopes, moderately eroded	0.38	0.1%		28	25
1313E2	Munterville silty clay loam, 14 to 18 percent slopes, moderately eroded	0.33	0.1%		22	5
<b>Weighted Average</b>					<b>54.3</b>	<b>48.5</b>

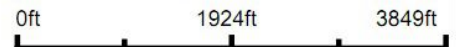
\*\*IA has updated the CSR values for each county to CSR2.



# Aerial Map



Map Center: 40° 47' 55.96, -91° 51' 45.1



**2-69N-9W**  
**Van Buren County**  
**Iowa**



7/13/2023

Field borders provided by Farm Service Agency as of 5/21/2008.