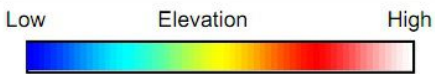
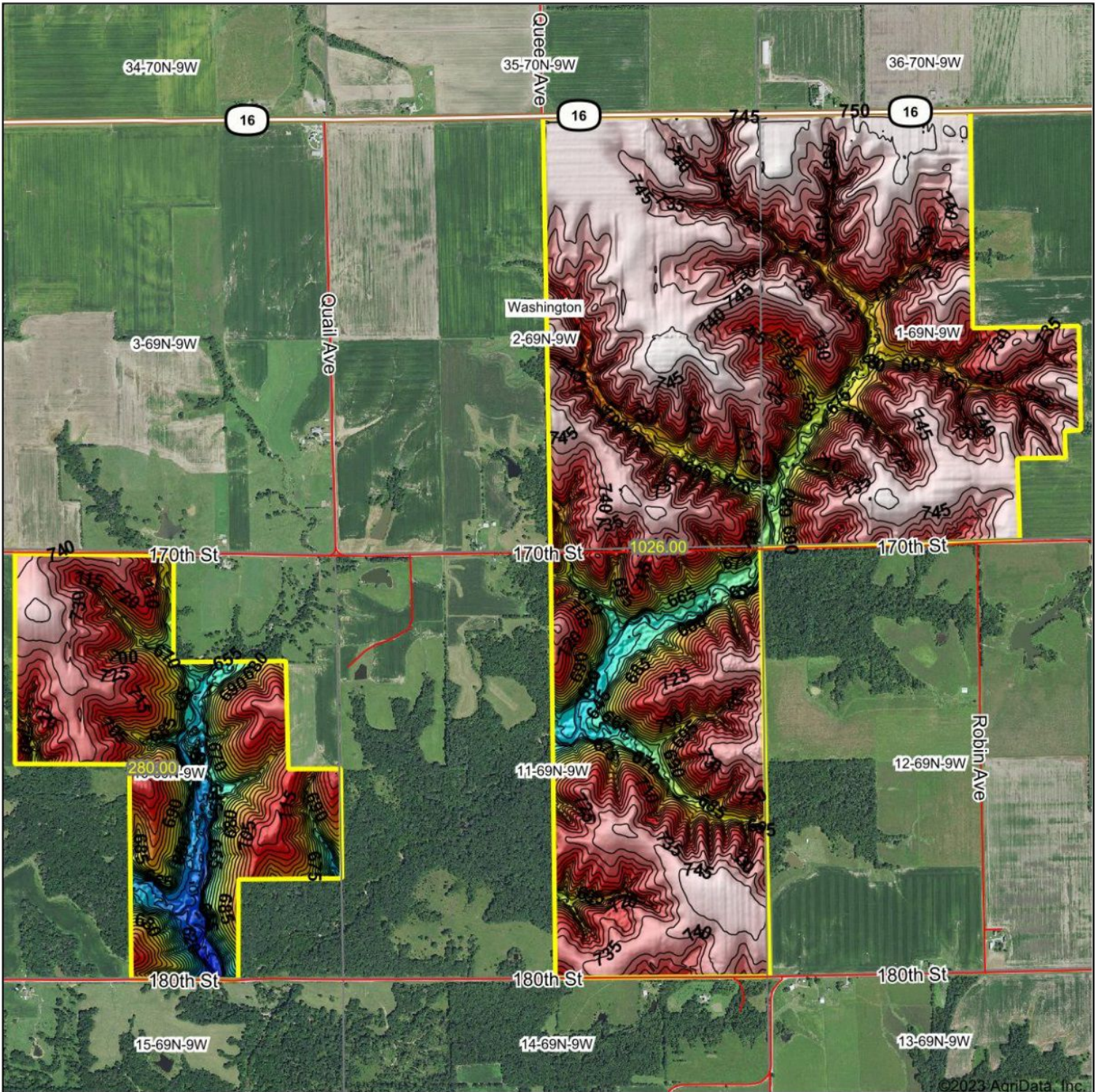
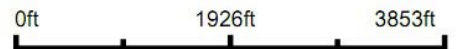


Topography Hillshade



Source: USGS 3 meter dem
 Interval(ft): 5
 Min: 607.7
 Max: 751.9
 Range: 144.2
 Average: 716.8
 Standard Deviation: 29.66 ft



2-69N-9W
 Van Buren County
 Iowa

Boundary Center: 40° 47' 55.95, -91° 51' 45.3