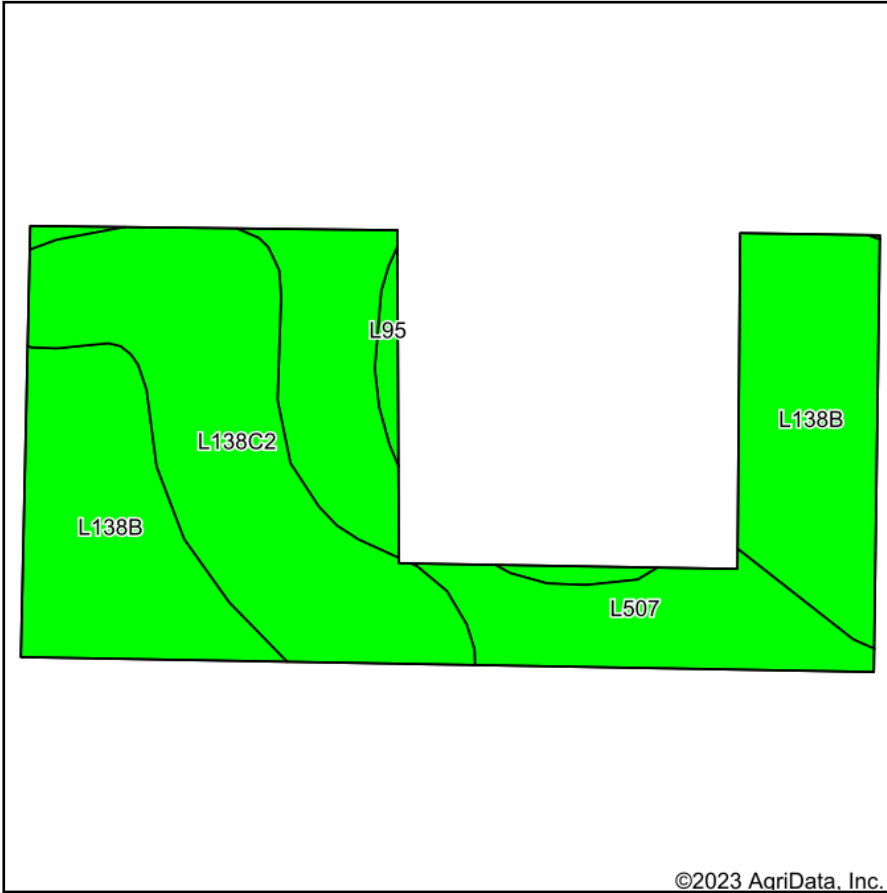
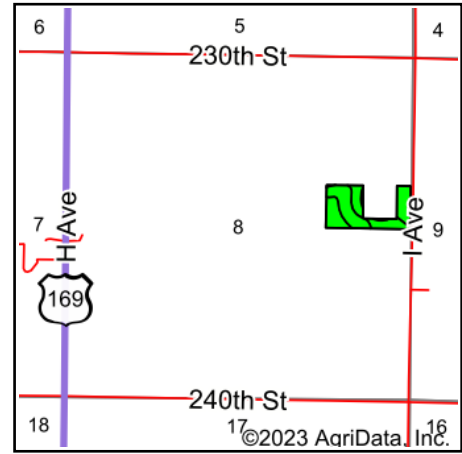


Tillable Soils Map



Soils data provided by USDA and NRCS.



State: **Iowa**
 County: **Boone**
 Location: **8-83N-27W**
 Township: **Marcy**
 Acres: **13.54**
 Date: **6/22/2023**



Maps Provided By:



© AgriData, Inc. 2023

www.AgriDataInc.com



Area Symbol: IA015, Soil Area Version: 30

| Code | Soil Description | Acres | Percent of field | CSR2 Legend | Non-Irr Class *c | *i Corn Bu | *i Soybeans Bu | CSR2** | *n NCCPI Overall | |
|-------------------------|--|-------|------------------|-------------|------------------|-------------|----------------|-------------|------------------|----------------|
| L138B | Clarion loam, Bemis moraine, 2 to 6 percent slopes | 5.37 | 39.7% | | Ile | 220.8 | 64.0 | 88 | 79 | |
| L138C2 | Clarion loam, Bemis moraine, 6 to 10 percent slopes, moderately eroded | 4.30 | 31.8% | | IIle | 0.0 | 0.0 | 83 | 65 | |
| L507 | Canisteo clay loam, Bemis moraine, 0 to 2 percent slopes | 3.58 | 26.4% | | IIw | 0.0 | 0.0 | 87 | 81 | |
| L95 | Harps clay loam, Bemis moraine, 0 to 2 percent slopes | 0.29 | 2.1% | | IIw | 0.0 | 0.0 | 75 | 80 | |
| Weighted Average | | | | | | 2.32 | 87.6 | 25.4 | 85.9 | *n 75.1 |

**IA has updated the CSR values for each county to CSR2.

*i Yield data provided by the ISPAID Database version 8.1.1 developed by IA State University.

*n: The aggregation method is "Weighted Average using all components"

*c: Using Capabilities Class Dominant Condition Aggregation Method

Soils data provided by USDA and NRCS.