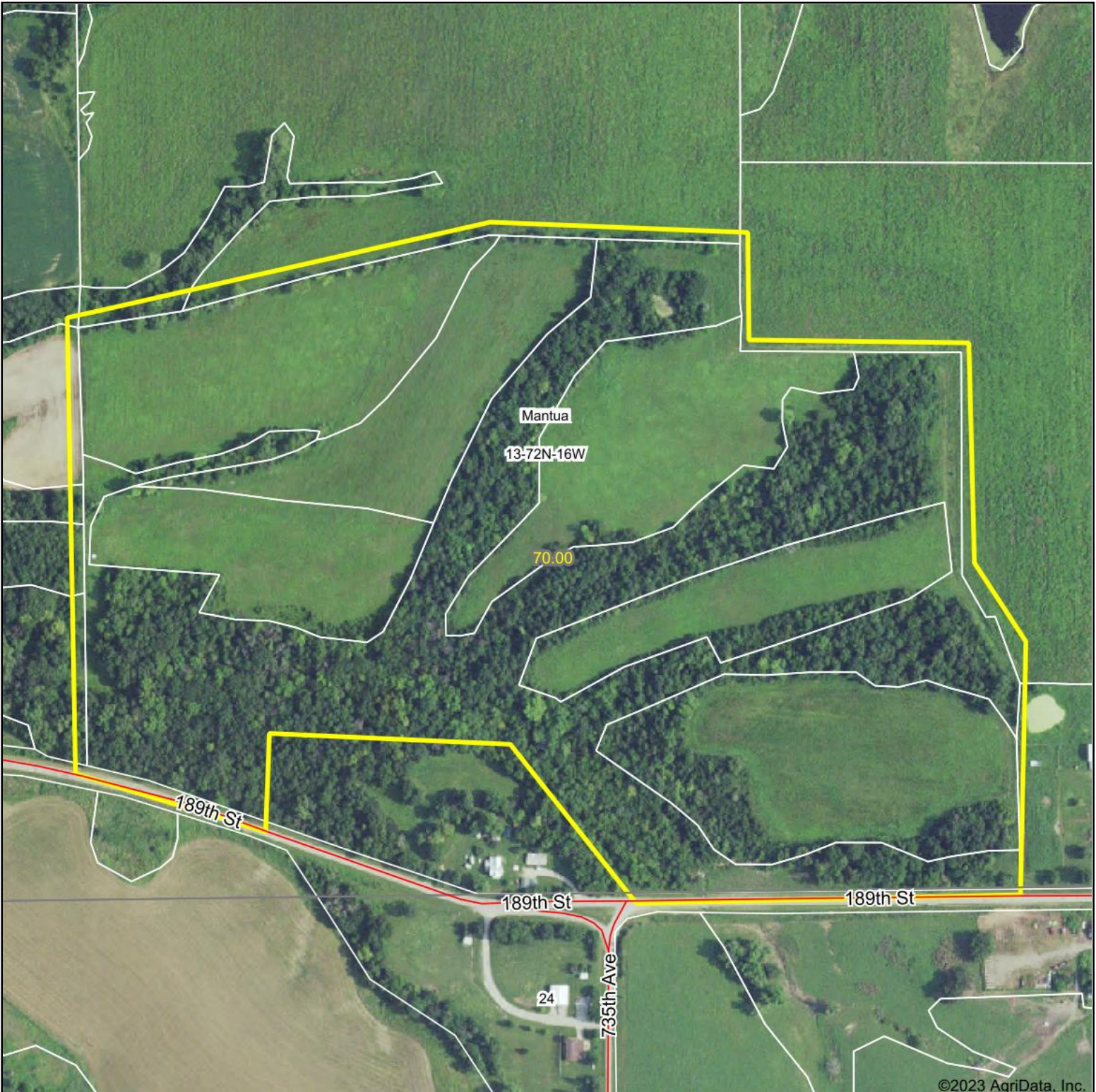


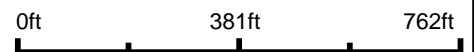
Aerial Map



©2023 AgriData, Inc.



Boundary Center: 41° 1.9646', -92° 38.9736'



13-72N-16W
Monroe County
Iowa



Maps Provided By:
 surety
CUSTOMIZED ONLINE MAPPING
© AgriData, Inc. 2023 www.AgriDataInc.com

9/6/2023

Field borders provided by Farm Service Agency as of 5/21/2008.