



United States
Department of
Agriculture

Holt County, Nebraska



Common Land Unit

- Non-Cropland
- Cropland
- Tract Boundary
- PLSS

2022 NAIP Ortho Imagery

2023 Program Year

Map Created March 09, 2023

Farm 12453
Tract 11370

Wetland Determination Identifiers

- Restricted Use
- Limited Restrictions
- Exempt from Wetland Provisions

Tract Cropland Total: 134.40 acres

United States Department of Agriculture (USDA) Farm Service Agency (FSA) maps are for FSA Program administration only. This map does not represent a legal survey or reflect actual ownership; rather it depicts the information provided directly from the producer and/or National Agricultural Imagery Program (NAIP) imagery. The producer accepts the data 'as is' and assumes all risks associated with its use. USDA-FSA assumes no responsibility for actual or consequential damage incurred as a result of any user's reliance on this data outside FSA Programs. Wetland identifiers do not represent the size, shape, or specific determination of the area. Refer to your original determination (CPA-026 and attached maps) for exact boundaries and determinations or contact USDA Natural Resources Conservation Service (NRCS).



United States Department of Agriculture

Holt County, Nebraska



Common Land Unit

- Non-Cropland
- Cropland
- Tract Boundary
- PLSS

2022 NAIP Ortho Imagery

2023 Program Year

Map Created March 09, 2023

Farm 12453

Tract 11371

Wetland Determination Identifiers

- Restricted Use
- Limited Restrictions
- Exempt from Wetland Provisions

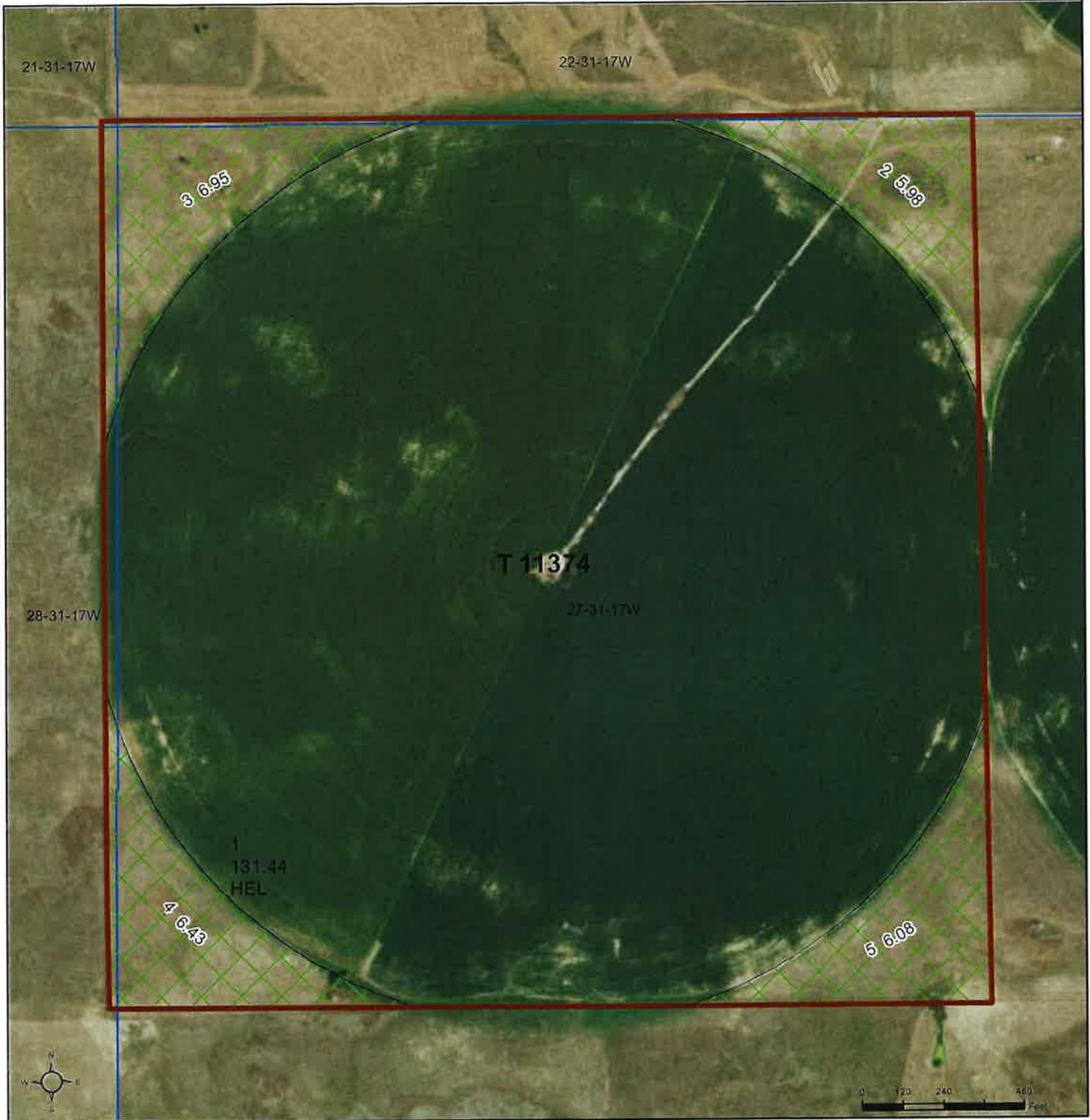
Tract Cropland Total: 129.42 acres

United States Department of Agriculture (USDA) Farm Service Agency (FSA) maps are for FSA Program administration only. This map does not represent a legal survey or reflect actual ownership; rather it depicts the information provided directly from the producer and/or National Agricultural Imagery Program (NAIP) imagery. The producer accepts the data 'as is' and assumes all risks associated with its use. USDA-FSA assumes no responsibility for actual or consequential damage incurred as a result of any user's reliance on this data outside FSA Programs. Wetland identifiers do not represent the size, shape, or specific determination of the area. Refer to your original determination (CPA-026 and attached maps) for exact boundaries and determinations or contact USDA Natural Resources Conservation Service (NRCS).



United States Department of Agriculture

Holt County, Nebraska



Common Land Unit

- Non-Cropland
- Cropland
- Tract Boundary
- PLSS

2022 NAIP Ortho Imagery

2023 Program Year

Map Created March 09, 2023

Farm 12453

Tract 11374

Wetland Determination Identifiers

- Restricted Use
- Limited Restrictions
- Exempt from Wetland Provisions

Tract Cropland Total: 131.44 acres

United States Department of Agriculture (USDA) Farm Service Agency (FSA) maps are for FSA Program administration only. This map does not represent a legal survey or reflect actual ownership; rather it depicts the information provided directly from the producer and/or National Agricultural Imagery Program (NAIP) imagery. The producer accepts the data 'as is' and assumes all risks associated with its use. USDA-FSA assumes no responsibility for actual or consequential damage incurred as a result of any user's reliance on this data outside FSA Programs. Wetland identifiers do not represent the size, shape, or specific determination of the area. Refer to your original determination (CPA-026 and attached maps) for exact boundaries and determinations or contact USDA Natural Resources Conservation Service (NRCS).