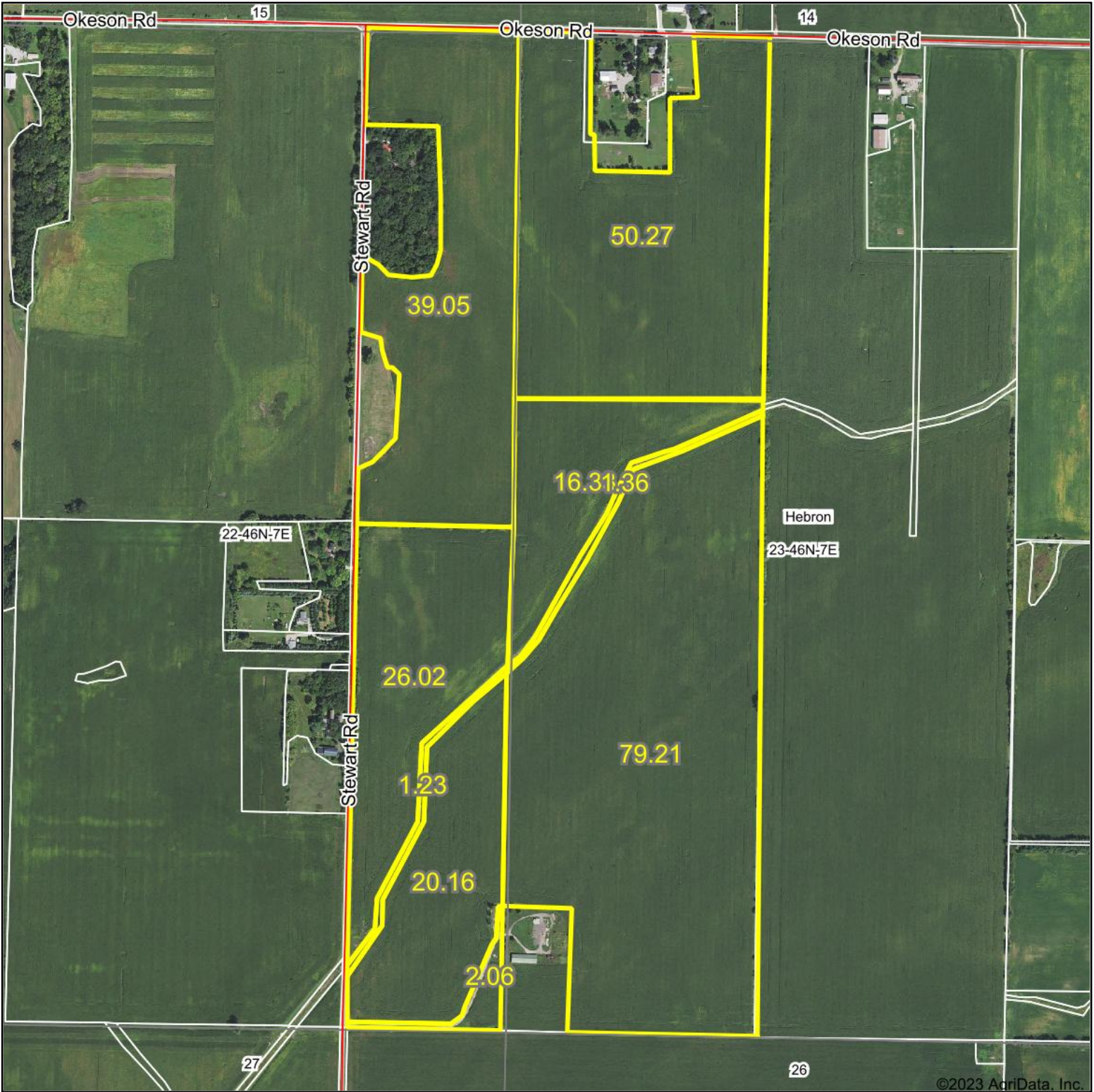
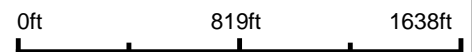


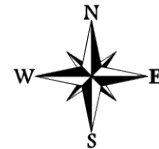
Aerial Map - Tillable Acres



Boundary Center: 42° 27' 1.98, -88° 23' 35.09



23-46N-7E
McHenry County
Illinois



Maps Provided By:
surety
CUSTOMIZED ONLINE MAPPING
© AgriData, Inc. 2023 www.AgriDataInc.com

9/28/2023

Field borders provided by Farm Service Agency as of 5/21/2008.