
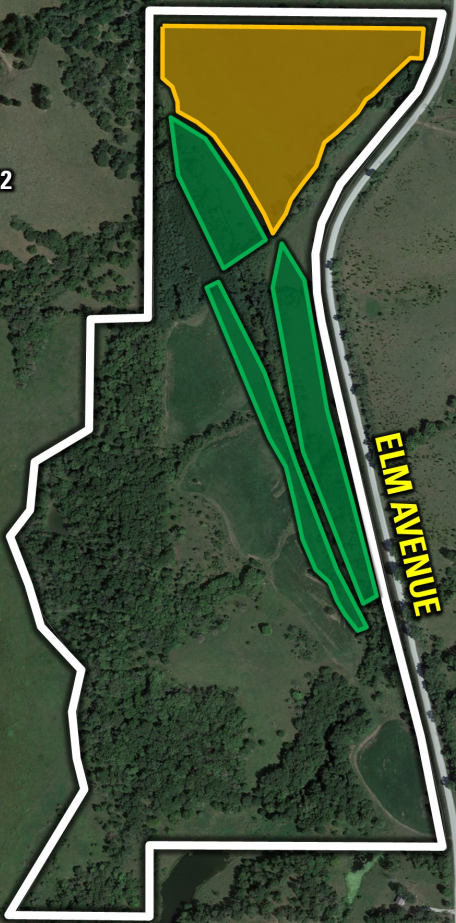
 CRP ACRES - 10.68 ACRES, CP21 PAYING \$1,368.00 ANNUALLY (\$129.98/ACRE) THROUGH 2032

 CRP ACRES - 15.73 ACRES, CP38E-25 PAYING \$4,525.52 ANNUALLY (\$287.70/ACRE) THROUGH 2032



ELM AVENUE