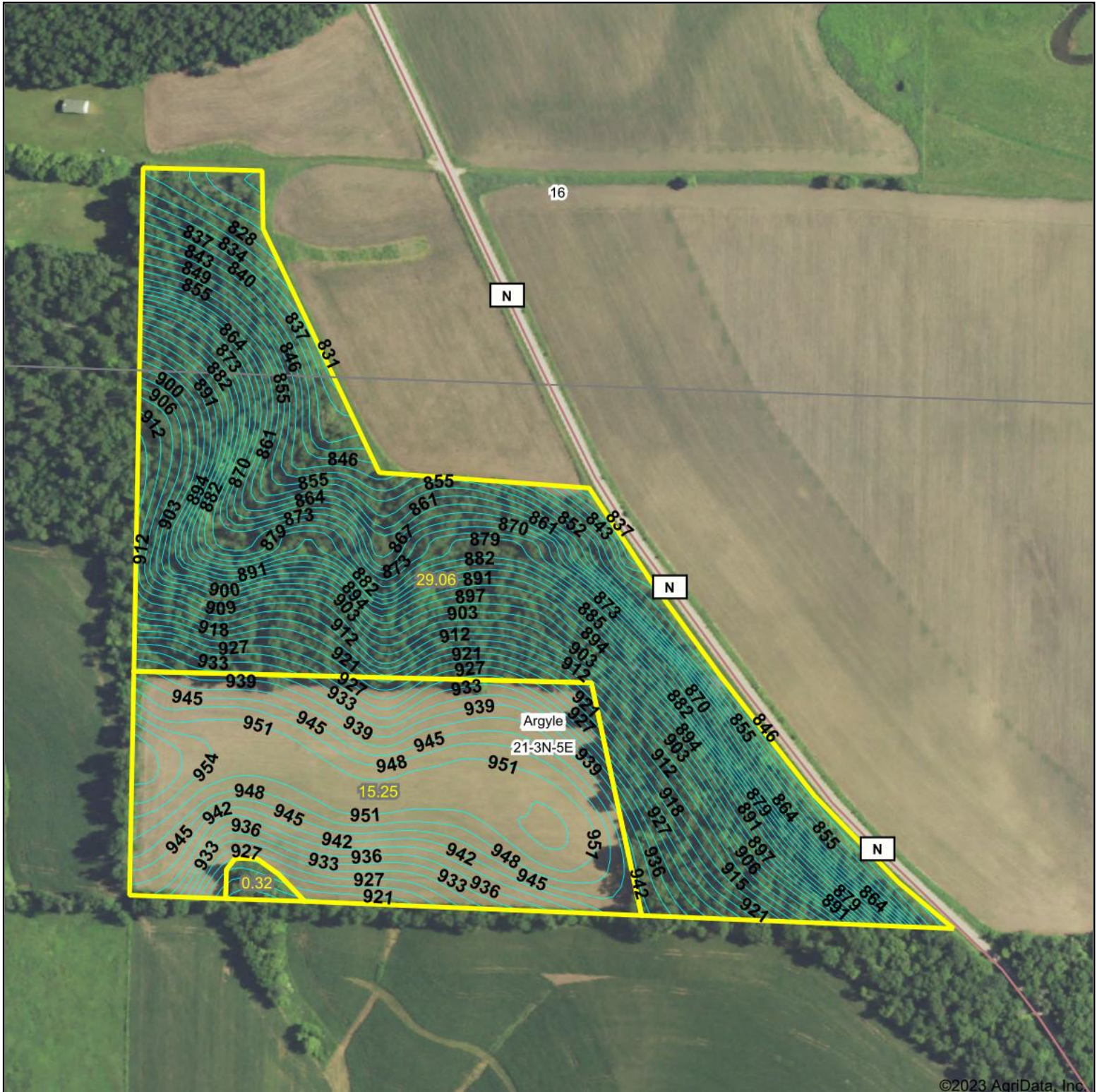


# Topography Contours



©2023 AgriData, Inc.



Source: USGS 10 meter dem

Interval(ft): 3.0

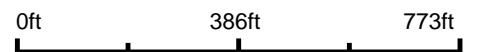
Min: 819.9

Max: 961.7

Range: 141.8

Average: 909.3

Standard Deviation: 35.1 ft



10/2/2023

**21-3N-5E**  
**Lafayette County**  
**Wisconsin**

Boundary Center: 42° 43' 31.76, -89° 54' 10.71

Maps Provided By:



© AgriData, Inc. 2023

www.AgriDataInc.com