



CORYDON SERVICE CENTER  
 300 S LAFAYETTE ST  
 CORYDON, IA 50060-1644  
 (641) 872-2670

MARK FEHSEKE  
 DISTRICT CONSERVATIONIST

## Conservation Plan

**Crop**

**Tract: 3017**

**Conservation Crop Rotation**

A crop rotation of Beans-Corn-Beans-Oats-Meadow( 5 years) will be used on these fields. This fields is scheduled to be seeded in 2014.

Field	Planned Amount	Month	Year	Applied Amount	Date
3.1	37.1 ac	5	2014		
<b>Total:</b>	37.1 ac				

**Conservation Crop Rotation**

A crop rotation of Corn-Soybeans will be used on these fields.

Field	Planned Amount	Month	Year	Applied Amount	Date
1	4.3 ac	5	2014		
2	48.3 ac	5	2014		
3.2	4.9 ac	5	2014		
3.3	7 ac	5	2014		
<b>Total:</b>	64.5 ac				

**Residue Mgmt, Mulch Till**

Soybeans are NO-TILLED into the sod leaving at least 60% residue. Corn is NO-TILLED into the Soybean stubble leaving at least 50% residue after planting. Soybeans are NO-TILLED into the corn stubble leaving at least 70% residue. The meadow, with a cover crop, will be planted into the soybean stubble. The soybean stubble maybe work leaving at least 30% residue after the planting of the meadow

Field	Planned Amount	Month	Year	Applied Amount	Date
3.1	37.1 ac	5	2014		
<b>Total:</b>	37.1 ac				

**Residue Mgmt-No-Till/Strip Till/Direct S**

These fields will be planted/drilled using a continuous NO-TILL system. Corn is NO-TILLED into soybean stubble leavin at least 40% residue. Soybeans are NO-TILLED into corn stalks leaving at least 60% residue.

Field	Planned Amount	Month	Year	Applied Amount	Date
1	4.3 ac	5	2014		
2	48.3 ac	5	2014		
3.2	4.9 ac	5	2014		
3.3	7 ac	5	2014		
<b>Total:</b>	64.5 ac				

**Contour Farming**

All planting and tillage operations will be performed on the contour with a predominant row grade of 2%.

Field	Planned Amount	Month	Year	Applied Amount	Date
1	4.3 ac	5	2014		
2	48.3 ac	5	2014		
3.2	4.9 ac	5	2014		
3.3	7 ac	5	2014		
Total:	64.5 ac				

**Grassed Waterway**

Waterways / Critical Area Seedings will be constructed and/or maintained in the areas where shown on the Conservation Plan Map.

Field	Planned Amount	Month	Year	Applied Amount	Date
1	0.5 ac	5	2014		
2	1.9 ac	5	2014		
3.1	3.3 ac	5	2014		
3.2	0.2 ac	5	2014		
3.3	0.8 ac	5	2014		
Total:	6.7 ac				

CERTIFICATION OF PARTICIPANTS

\_\_\_\_\_

\_\_\_\_\_ DATE

CERTIFICATION OF:

DISTRICT CONSERVATIONIST  
MARK FEHSEKE \_\_\_\_\_ DATE

CONSERVATION DISTRICT  
Wayne SOIL & WATER CONSER \_\_\_\_\_ DATE

PUBLIC BURDEN STATEMENT

According to the Paperwork Reduction Act of 1995, an agency may not conduct or sponsor, and a person is not required to respond to a collection of information unless it displays a valid OMB control number. The valid OMB control number for this information collections is 0578-0013. The time required to complete this information collection is estimated to average 45/0.75 minutes per response, including the time for reviewing instructions, searching existing data sources, gathering and maintaining the data needed, and completing and reviewing the collection information.

PRIVACY ACT

The above statements are made in accordance with the Privacy Act of 1974 (5 U.S.C 522a). Furnishing this information is voluntary; however failure to furnish correct, complete information will result in the withholding or withdrawal of such technical or financial assistance. The information may be furnished to other USDA agencies, the Internal Revenue Service, the Department of Justice, or other state or federal law enforcement agencies, or in response to orders of a court, magistrate, or administrative tribunal.

USDA NON-DISCRIMINATION STATEMENT

The U.S. Department of Agriculture (USDA) prohibits discrimination against its customers. If you believe you experienced discrimination when obtaining services from USDA, participating in a USDA program, or participating in a program that receives financial assistance from USDA, you may file a complaint with USDA. Information about how to file a discrimination complaint is available from the Office of the Assistant Secretary for Civil Rights. USDA prohibits discrimination in all its programs and activities on the basis of race, color, national origin, age, disability, and where applicable, sex (including gender identity and expression), marital status, familial status, parental status, religion, sexual orientation, political beliefs, genetic information, reprisal, or because all or part of an individual's income is derived from any public assistance program. (Not all prohibited bases apply to all programs.) To file a complaint of discrimination, complete, sign, and mail a program discrimination complaint form, available at any USDA office location or online at [www.ascr.usda.gov](http://www.ascr.usda.gov), or write to:

USDA Office of the Assistant Secretary for Civil Rights  
1400 Independence Avenue, SW.  
Washington, DC 20250-9410

Or call toll free at (866) 632-9992 (voice) to obtain additional information, the appropriate office or to request documents. Individuals who are deaf, hard of hearing, or have speech disabilities may contact USDA through the Federal Relay service at (800) 877-8339 or (800) 845-6136 (in Spanish). USDA is an equal opportunity provider, employer, and lender. Persons with disabilities who require alternative means for communication of program information (e.g., Braille, large print, audiotope, etc.) should contact USDA's TARGET Center at (202) 720-2600 (voice and TDD).

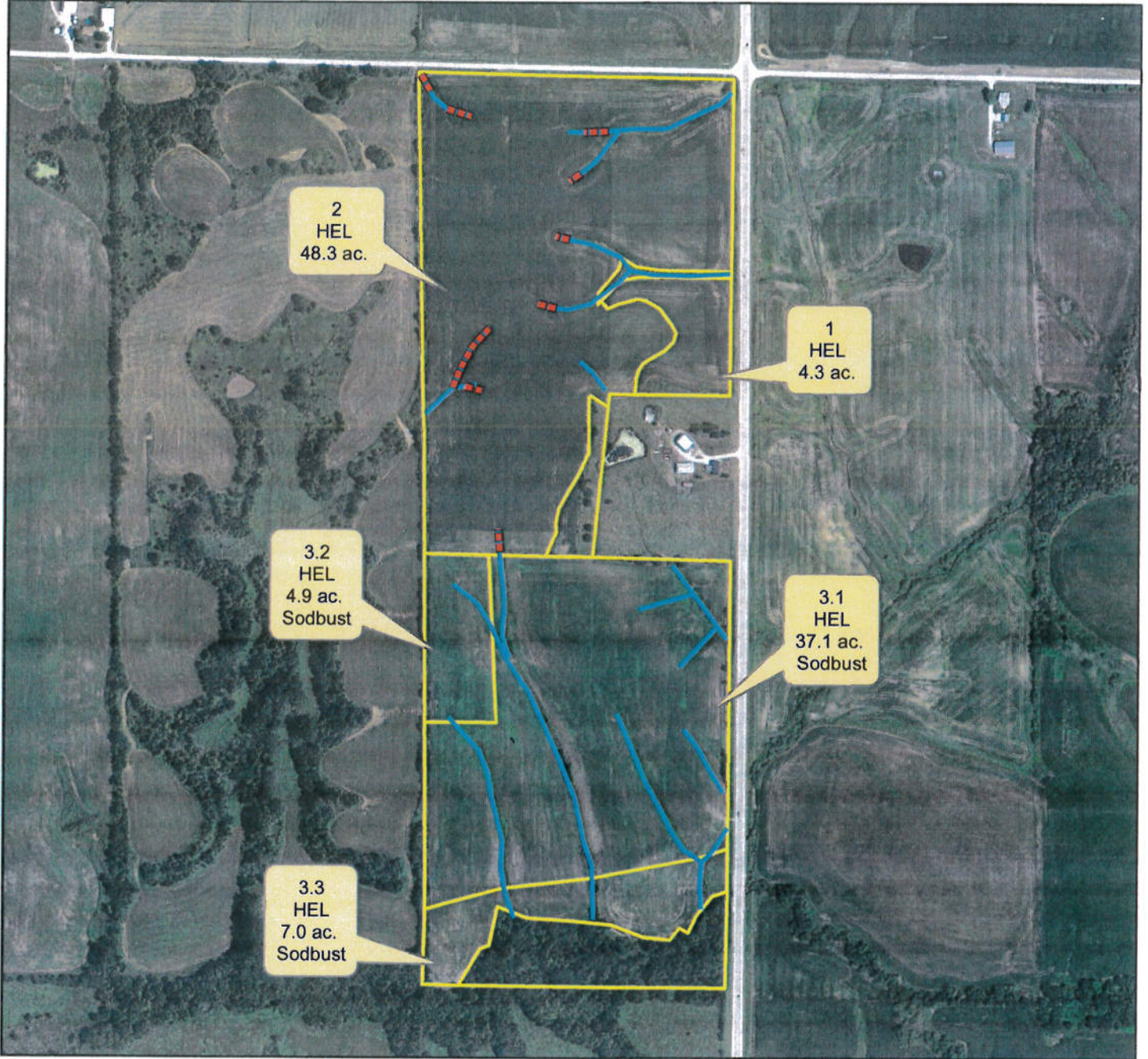
# t3017 Plan Map

Customer(s):  
District: WAYNE SOIL & WATER CONSERVATION DISTRICT




Field Office: CORYDON SERVICE CENTER  
Agency: Natural Resources Conservation Service

State and County: IA, WAYNE

Legal Description: Clay section 4  
2011 imagery



## Legend

-  Areas needing repairs
-  Critical Area Planting
-  Consplan

