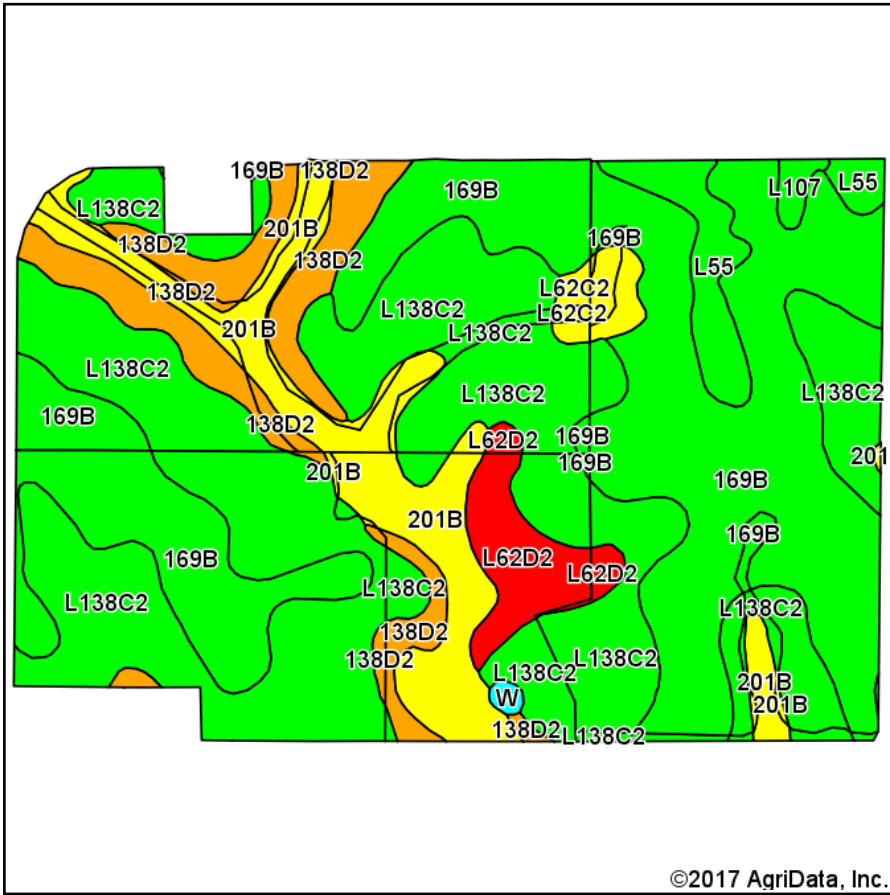
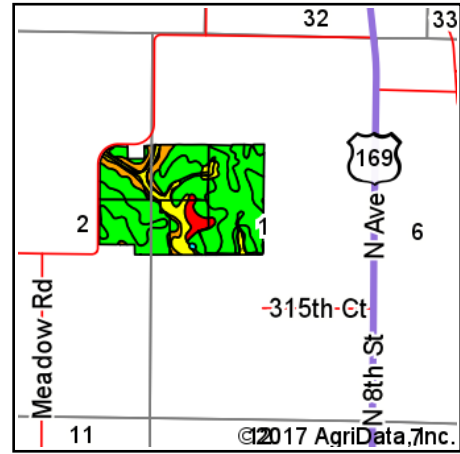


# Total Soils Map



Soils data provided by USDA and NRCS.



State: **Iowa**  
 County: **Dallas**  
 Location: **1-78N-28W**  
 Township: **Adams**  
 Acres: **223.91**  
 Date: **4/27/2017**



Maps Provided By:



© AgriData, Inc. 2017

www.AgriDataInc.com



Area Symbol: IA049, Soil Area Version: 22

Code	Soil Description	Acres	Percent of field	CSR2 Legend	Non-Irr Class *c	CSR2**	CS R
L138C2	Clarion loam, Bemis moraine, 6 to 10 percent slopes, moderately eroded	88.35	39.5%		IIIe	83	
169B	Clarion loam, 2 to 5 percent long slopes	76.51	34.2%		Ile	91	92
201B	Coland-Terril complex, 2 to 5 percent slopes	22.69	10.1%		IIw	74	68
138D2	Clarion loam, 9 to 14 percent slopes, moderately eroded	17.67	7.9%		IIIe	54	56
L62D2	Storden loam, Bemis moraine, 10 to 16 percent slopes, moderately eroded	7.34	3.3%		IVe	41	
L55	Nicollet loam, 1 to 3 percent slopes	6.79	3.0%		Ie	91	
L62C2	Storden loam, Bemis moraine, 6 to 10 percent slopes, moderately eroded	3.17	1.4%		IIIe	64	
L107	Webster clay loam, Bemis moraine, 0 to 2 percent slopes	0.98	0.4%		IIw	88	
W	Water	0.41	0.2%			0	0
<b>Weighted Average</b>						<b>81</b>	<b>*</b>

\*\*IA has updated the CSR values for each county to CSR2.

\*- CSR weighted average cannot be calculated on the current soils data, use prior data version for csr values.

\*c: Using Capabilities Class Dominant Condition Aggregation Method

Soils data provided by USDA and NRCS.