



MADISON COUNTY 71 ACRES M/L

FARMLAND & RECREATIONAL LAND

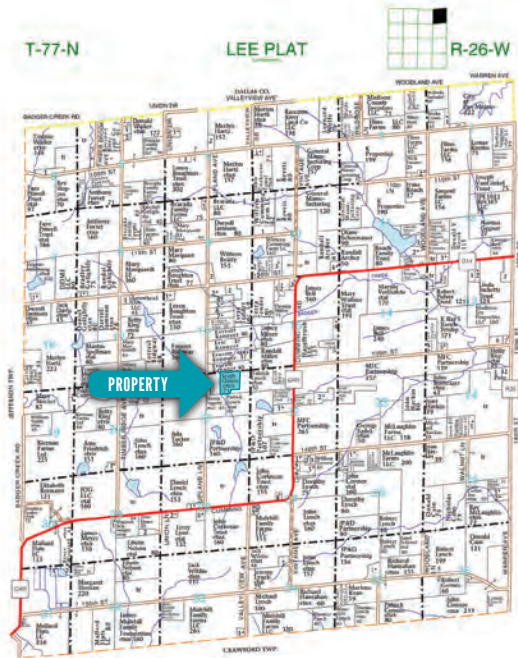
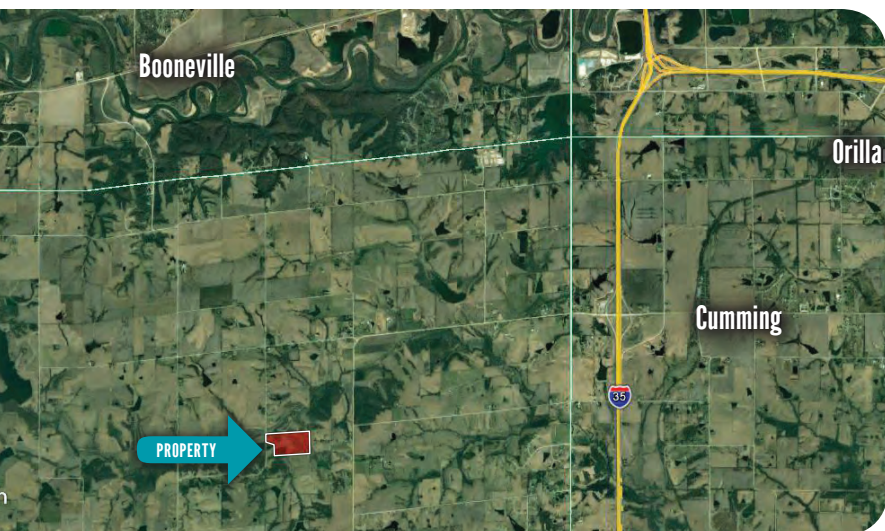
Scott Kelly: 515.473.8913
Scott@PeoplesCompany.com

Eric Lonnevik: 515.473.0278
Eric@PeoplesCompany.com

LISTING #14216

PEOPLES COMPANY.COM

71 ACRES M/L



LOCATION:
21 - 77N - 26W

LISTING PRICE:
\$370,500 (\$5,218/Acre)

SCHOOL DISTRICT:
Winterset

ANNUAL TAXES:
\$674

PARCEL IDS:
031012124012000
031012122000000



MADISON COUNTY LISTING #14216

Offering 71 acres m/l of Madison County farmland and recreational land ideally situated just minutes from West Des Moines. Private location with gorgeous hilltop views overlooking rural Madison County and a 6 acre pond. Includes approximately 15 tillable acres, 17 acres of timber, and a 60' x 60' steel hay shed for covered storage. With rural water and electric at the road, build your dream home in the country while taking advantage of the Metro amenities. Located on the east side of Upland Lane in Section 21 of Lee Township.

Directions: From the intersection of Interstate 35 and Cumming Road/Hwy G14, travel west on Cumming Road/Hwy G14 approximately 3 miles. As the pavement turns south, turn west onto 120th Street and continue one mile. Turn south onto Upland Lane and continue 1.1 miles. Property is situated on the east side of Upland Lane. Look for Peoples Company signage.

Scott Kelly: 515.473.8913
Scott@PeoplesCompany.com

Eric Lonnevik: 515.473.0278
Eric@PeoplesCompany.com

PEOPLES COMPANY.COM



*Be sure to check out the
aerial drone video of this
property on our website!*



12119 Stratford Dr, Ste B
Clive, IA 50325
PeoplesCompany.com

TOTAL ACRES:

71.07

TILLABLE ACRES:

14.93

TILLABLE CSR:

28.9

TILLABLE CSR2:

31.9

TIMBER ACRES:

17.08

POND ACRES:

5.97



*For more information, please look
up listing #14216 on our website:*

PEOPLES COMPANY.COM

LISTING #14216

Scott Kelly: 515.473.8913
Scott@PeoplesCompany.com

Eric Lonnevik: 515.473.0278
Eric@PeoplesCompany.com