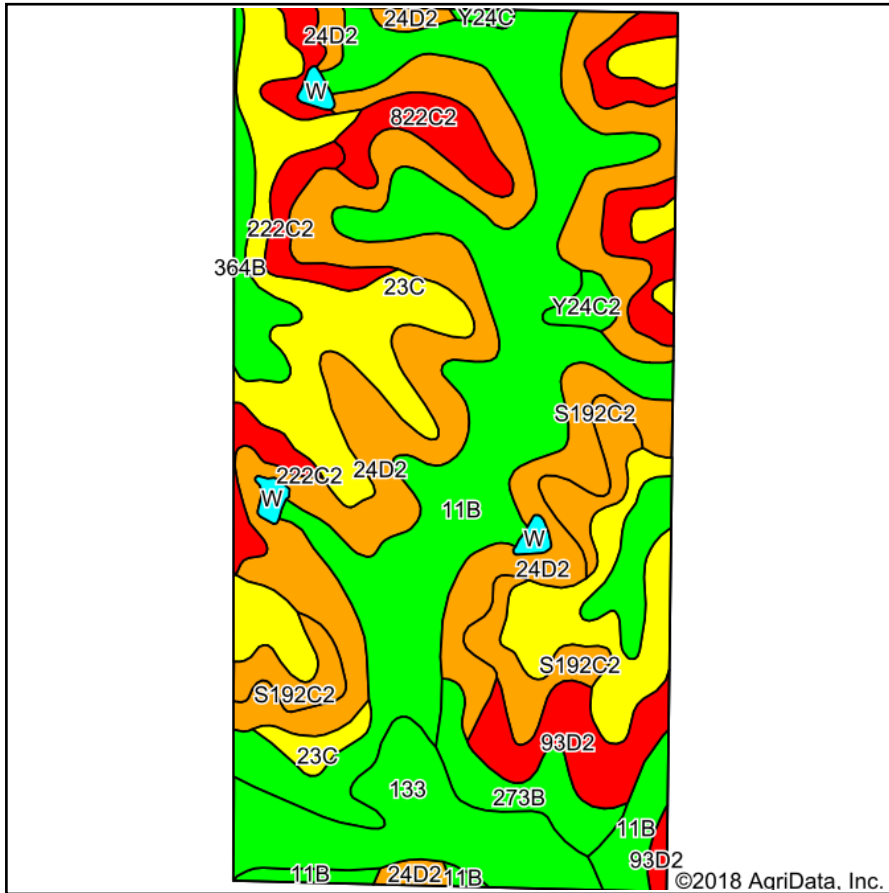
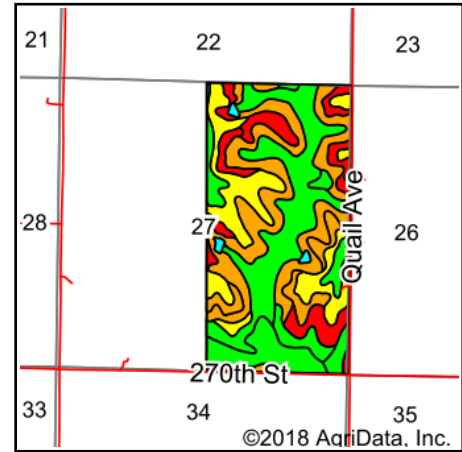


Soils Map



Soils data provided by USDA and NRCS.



State: **Iowa**
 County: **Union**
 Location: **27-71N-29W**
 Township: **Sand Creek**
 Acres: **314.01**
 Date: **6/27/2018**

PEOPLES COMPANY
 INNOVATIVE. REAL ESTATE. SOLUTIONS.

Maps Provided By:
surety
 CUSTOMIZED ONLINE MAPPING
 © AgriData, Inc. 2018 www.AgridataInc.com



Area Symbol: IA175, Soil Area Version: 19

Code	Soil Description	Acres	Percent of field	CSR2 Legend	Non-Irr Class *c	CSR2**	CSR	NCCPI Overall
11B	Colo-Ely silty clay loams, 2 to 5 percent slopes	79.66	25.4%		Ile	82	68	95
24D2	Shelby clay loam, 9 to 14 percent slopes, moderately eroded	79.50	25.3%		IIIe	46	48	68
23C	Arispe silty clay loam, 5 to 9 percent slopes	53.51	17.0%		IIIe	66	55	82
133	Colo silty clay loam, deep loess, 0 to 2 percent slopes, occasionally flooded	23.08	7.4%		IIw	78	80	95
222C2	Clarinda silty clay loam, 5 to 9 percent slopes, moderately eroded	19.39	6.2%		IVw	34	25	45
S192C2	Adair clay loam, heavy till, 5 to 9 percent slopes, moderately eroded	14.92	4.8%		IIIe	48		60
364B	Grundy silty clay loam, 2 to 5 percent slopes	11.89	3.8%		Ile	72	75	78
93D2	Adair-Shelby clay loams, 9 to 14 percent slopes, moderately eroded	11.60	3.7%		IVe	32	25	64
273B	Olmitz loam, 2 to 5 percent slopes	8.15	2.6%		Ile	89	72	98
822C2	Lamoni silty clay loam, 5 to 9 percent slopes, moderately eroded	7.09	2.3%		IIIe	38	30	57
W	Water	2.43	0.8%			0	0	
Y24C2	Shelby clay loam, dissected till plain, 5 to 9 percent slopes, eroded	2.08	0.7%		IIIe	73		70
Y24C	Shelby loam, dissected till plain, 5 to 9 percent slopes	0.71	0.2%		IIIe	76		87
Weighted Average						61.5	*-	77.7

**IA has updated the CSR values for each county to CSR2.

*- CSR weighted average cannot be calculated on the current soils data, use prior data version for csr values.

*c: Using Capabilities Class Dominant Condition Aggregation Method

Soils data provided by USDA and NRCS.