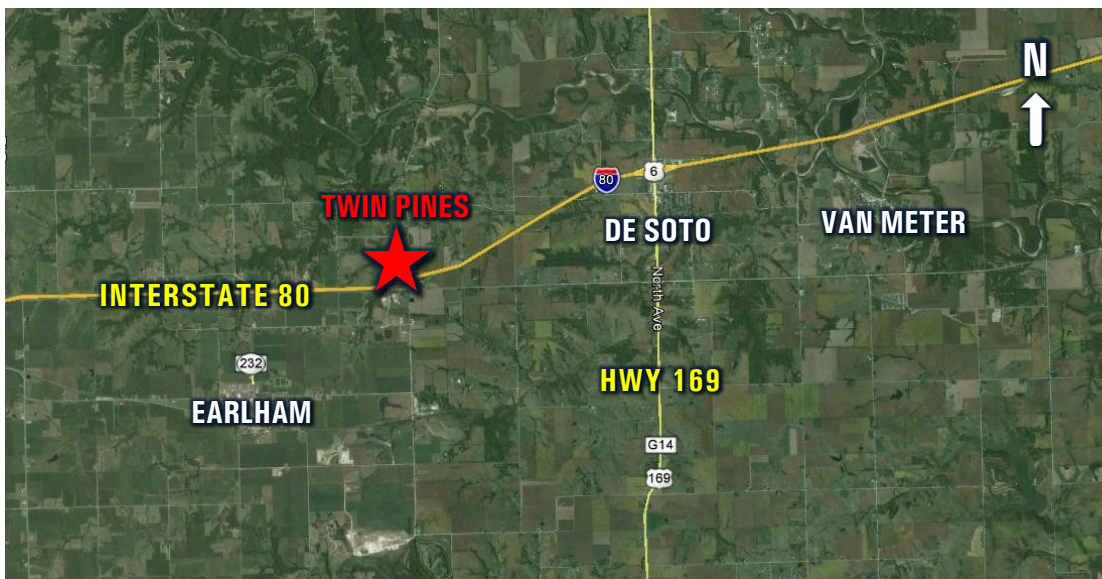


# LAND FOR SALE



## TWIN PINES DEVELOPMENT DALLAS COUNTY, IOWA



### LISTING # 13509

**DESCRIPTION:** Executive residential lots available in the Twin Pines development. Lots are approximately 3 acres each and include a variety of walkouts, daylights, and flats. Twin Pines features mature trees, great views, a paved road and two ponds. Build your dream home in a private country setting with ample open space and close to city amenities. Easy access to major corridors, and a short commute to anywhere in the Des Moines Metro.

**WATER:** Rural (Xenia RWD)

**ELECTRIC:** Lot

**GAS:** LP (Buried)

**SEWER:** Septic

**STREET:** Asphalt

**SCHOOL:** Earlham

**ZONING:** Single Family Residential

**OTHER:** Contact Agent for a copy of the plat map, covenants, & HOA.

**DIRECTIONS:** Take I-80 west of the Des Moines Metro to Exit 106. Travel north on L Ave / Hwy P58 for 0.2 miles. Turn west into the Twin Pines development.

**KALEN LUDWIG**

C: 515.402.3169

O: 515.222.1347

Kalen@PeoplesCompany.com

**KEATON DREHER**

C: 515.650.1276

O: 515.222.1347

Keaton@PeoplesCompany.com

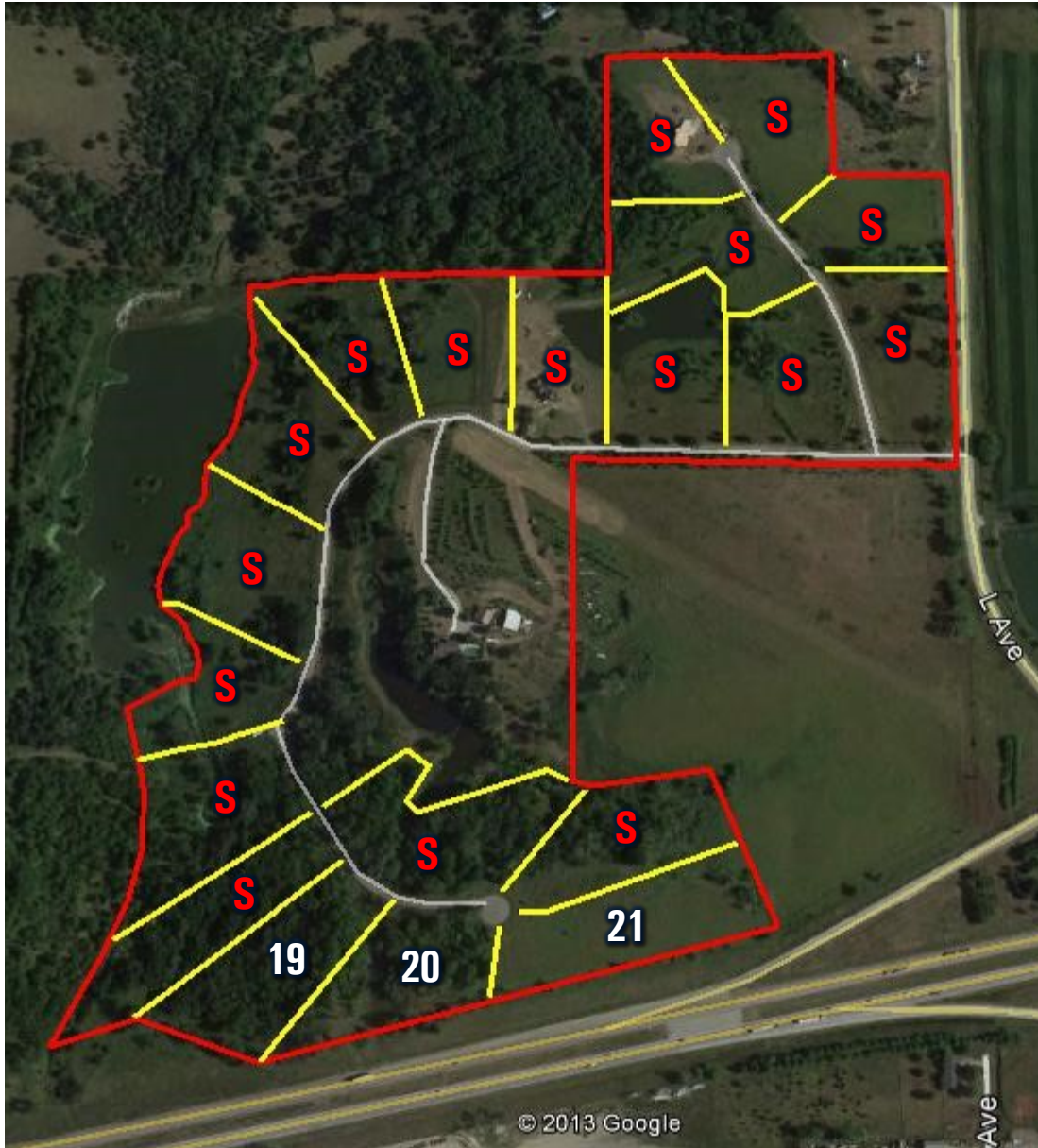
© 2014 Peoples Company We obtained this information from sources we believe to be reliable. However, we have not verified its accuracy and make no guarantee, warranty or representation about it. It is submitted subject to the possibility of errors, omissions, change of price, rental or other conditions, prior sale, lease or financing, or withdrawal without notice. We include projections, opinions, assumptions or estimates for example only and they may not represent current or future performance of the property. You and your tax and legal advisors should conduct your own investigation of the property and transaction.



# LAND FOR SALE



## TWIN PINES DEVELOPMENT DALLAS COUNTY, IOWA



**DISCLOSURE:** Lot types and boundaries are believed to be accurate, but should be verified by a qualified and experienced builder and/or engineer.



### LISTING # 13509

Lot	Price	Acres	Type
1	SOLD	3.04	Flat
2	SOLD	3.06	WO
3	SOLD	3.02	WO
6	SOLD	3.01	WO
7	SOLD	3.04	WO
8	SOLD	3.12	WO
10	SOLD	3.03	WO
17	SOLD	3.03	WO
18	SOLD	3.24	WO
19	\$54,900	3.01	WO
20	\$54,900	3.02	DL
21	\$49,900	3.20	DL
22	SOLD	3.04	WO
23	SOLD	3.18	WO

#### COVENANTS:

One Story - 2,000 SF  
1 1/2 Story - 2,400 SF  
Two Story - 2,800 SF

*Note: 20% of finished SF in basement can be used in computation of overall finished SF.*

#### KALEN LUDWIG

C: 515.402.3169  
O: 515.222.1347  
Kalen@PeoplesCompany.com

#### KEATON DREHER

C: 515.650.1276  
O: 515.222.1347  
Keaton@PeoplesCompany.com