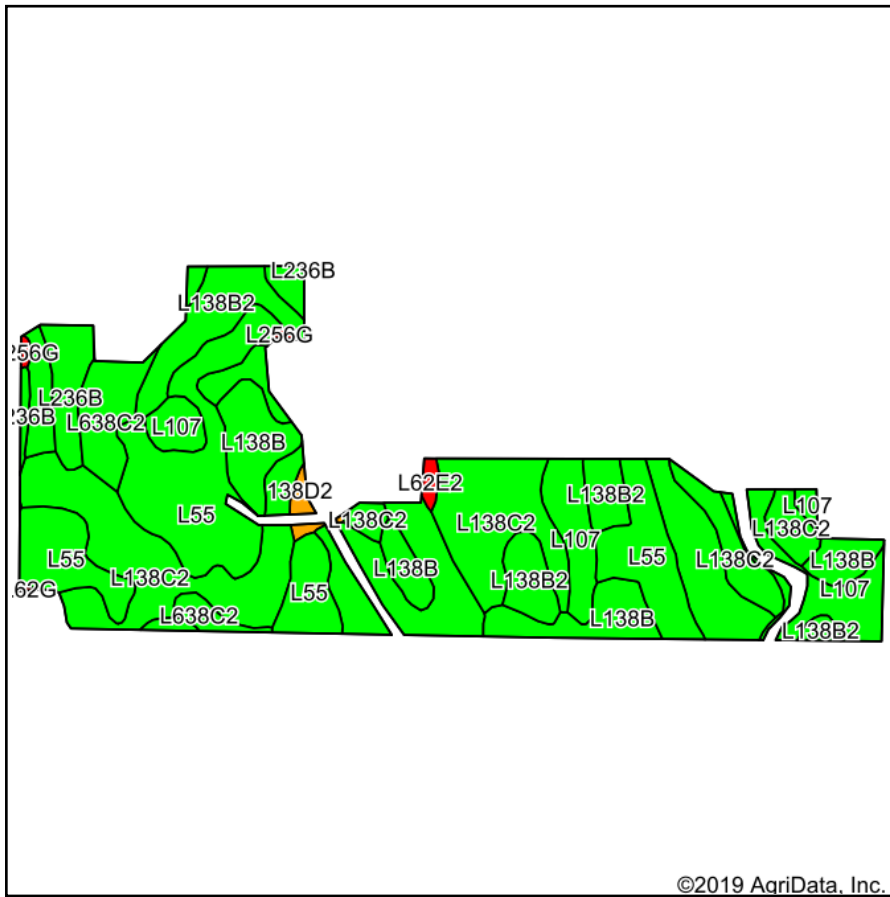
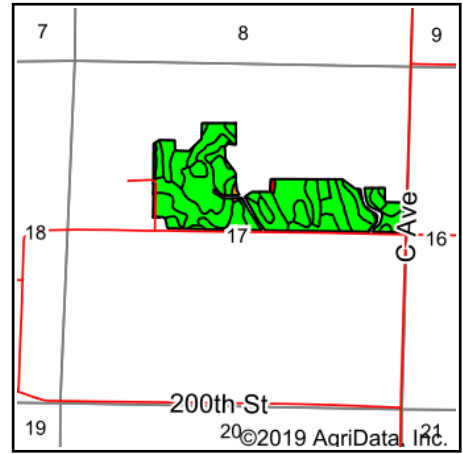


# Tillable Soils Map



Soils data provided by USDA and NRCS.



State: **Iowa**  
County: **Greene**  
Location: **17-84N-32W**  
Township: **Kendrick**  
Acres: **79.08**  
Date: **8/13/2019**



Maps Provided By:



Area Symbol: IA073, Soil Area Version: 24								
Code	Soil Description	Acres	Percent of field	CSR2 Legend	Non-Irr Class *c	CSR2**	CSR	*n NCCPI Overall
L138C2	Clarion loam, Bemis moraine, 6 to 10 percent slopes, moderately eroded	21.01	26.6%		IIle	83		60
L55	Nicollet loam, 1 to 3 percent slopes	17.71	22.4%		Ie	91		83
L107	Webster clay loam, Bemis moraine, 0 to 2 percent slopes	12.77	16.1%		IIlw	88		80
L138B	Clarion loam, Bemis moraine, 2 to 6 percent slopes	11.79	14.9%		Ile	88		79
L138B2	Clarion loam, Bemis moraine, 2 to 6 percent slopes, moderately eroded	7.21	9.1%		Ile	85		63
L638C2	Clarion-Storden complex, Bemis moraine, 6 to 10 percent slopes, moderately eroded	3.74	4.7%		IIle	75		61
L236B	Lester loam, Bemis moraine, 2 to 6 percent slopes	2.53	3.2%		Ile	85		89
L236C	Lester loam, Bemis moraine, 6 to 10 percent slopes	1.32	1.7%		IIle	81		88
138D2	Clarion loam, 9 to 14 percent slopes, moderately eroded	0.48	0.6%		IIle	50	56	64
L62E2	Storden loam, Bemis moraine, 10 to 22 percent slopes, moderately eroded	0.32	0.4%		IVe	32		52
L256G	Lester-Belview complex, Bemis moraine, 22 to 40 percent slopes	0.20	0.3%		VIIe	9		17
Weighted Average						85.6	*-	*n 72.8

\*\*IA has updated the CSR values for each county to CSR2.

\*- CSR weighted average cannot be calculated on the current soils data, use prior data version for csr values.

\*n: The aggregation method is "Weighted Average using major components"

\*c: Using Capabilities Class Dominant Condition Aggregation Method

Soils data provided by USDA and NRCS.