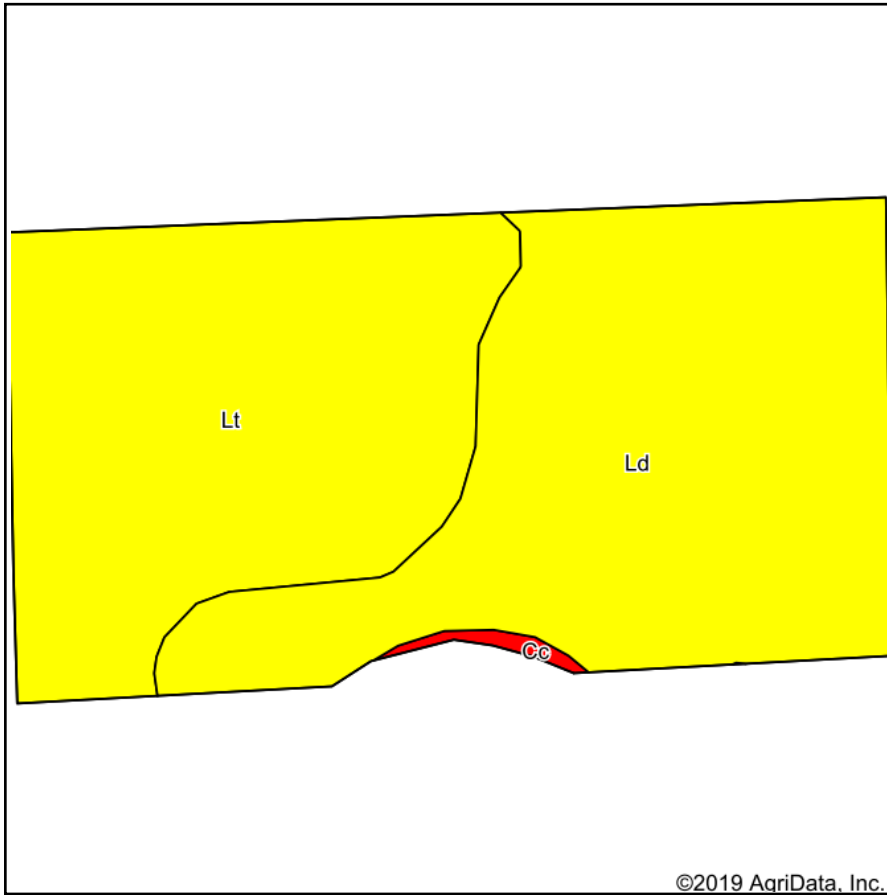
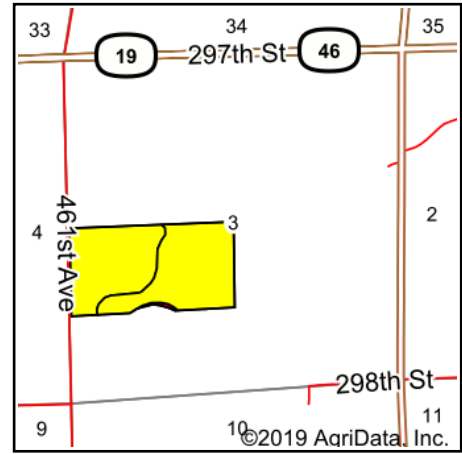


# Soils Map



Soils data provided by USDA and NRCS.



State: **South Dakota**  
 County: **Clay**  
 Location: **3-95N-52W**  
 Township: **Riverside**  
 Acres: **78.35**  
 Date: **8/20/2019**



Maps Provided By:



© AgriData, Inc. 2019

www.AgriDataInc.com



Area Symbol: SD027. Soil Area Version: 21						
Code	Soil Description	Acres	Percent of field	PI Legend	Non-Irr Class *c	Productivity Index
Ld	Lamo-Baltic silty clay loams, 0 to 2 percent slopes	41.66	53.2%		IIw	64
Lt	Luton silty clay, 0 to 2 percent slopes, occasionally flooded	36.17	46.2%		IVw	60
Cc	Chaska silt loam, channeled	0.52	0.7%		VIw	38
<b>Weighted Average</b>						<b>62</b>

\*c: Using Capabilities Class Dominant Condition Aggregation Method  
 Soils data provided by USDA and NRCS.