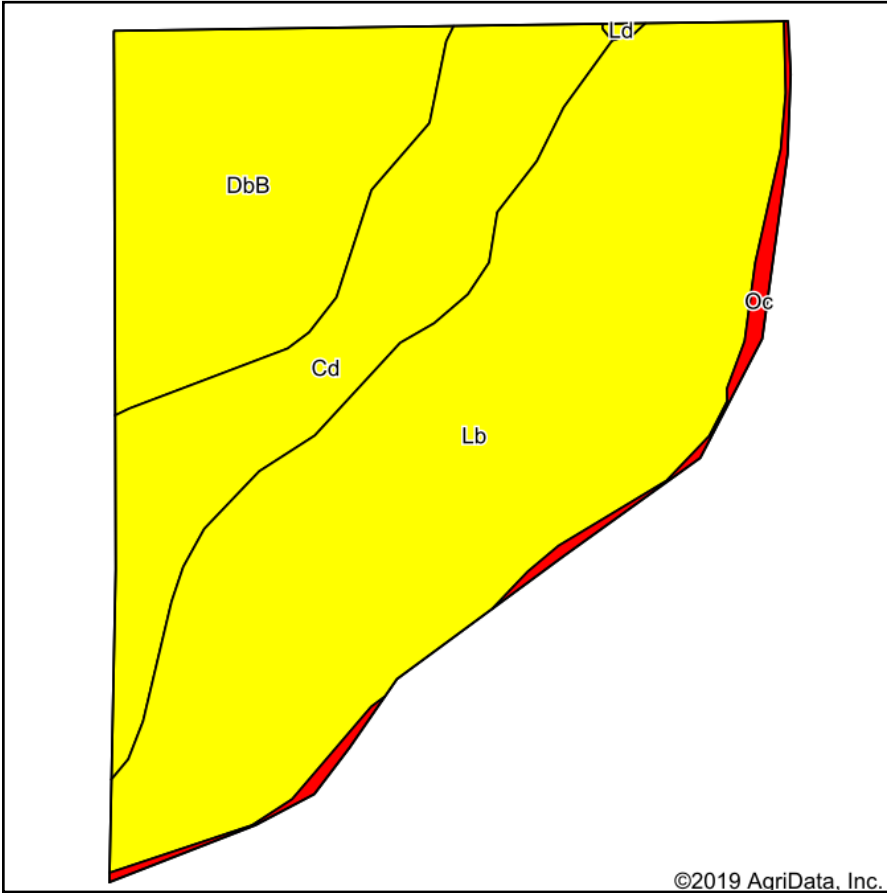
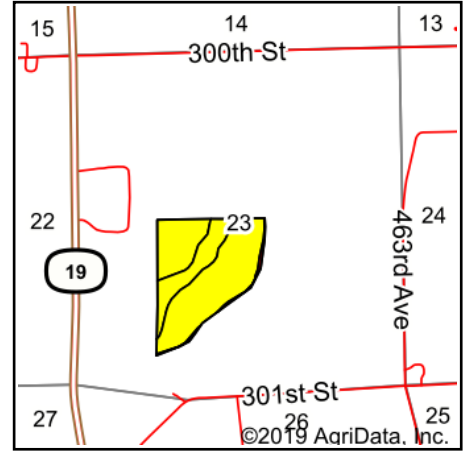


Soils Map



Soils data provided by USDA and NRCS.



State: **South Dakota**
 County: **Clay**
 Location: **23-95N-52W**
 Township: **Riverside**
 Acres: **62.13**
 Date: **8/20/2019**



Maps Provided By:



© AgriData, Inc. 2019

www.AgriDataInc.com



Area Symbol: SD027. Soil Area Version: 21							
Code	Soil Description	Acres	Percent of field	PI Legend	Non-Irr Class *c	Irr Class *c	Productivity Index
Lb	Lamo silty clay loam, cool, 0 to 2 percent slopes, occasionally flooded	34.63	55.7%		IIw	IIw	70
DbB	Dalesburg-Dimo complex, 1 to 4 percent slopes	13.70	22.1%		Ile		68
Cd	Clamo silty clay, 0 to 1 percent slopes	12.51	20.1%		IVw		61
Oc	Orthents, channelized	1.22	2.0%		VIIIs		8
Ld	Lamo-Baltic silty clay loams, 0 to 2 percent slopes	0.07	0.1%		IIw		64
Weighted Average							66.5

*c: Using Capabilities Class Dominant Condition Aggregation Method
 Soils data provided by USDA and NRCS.