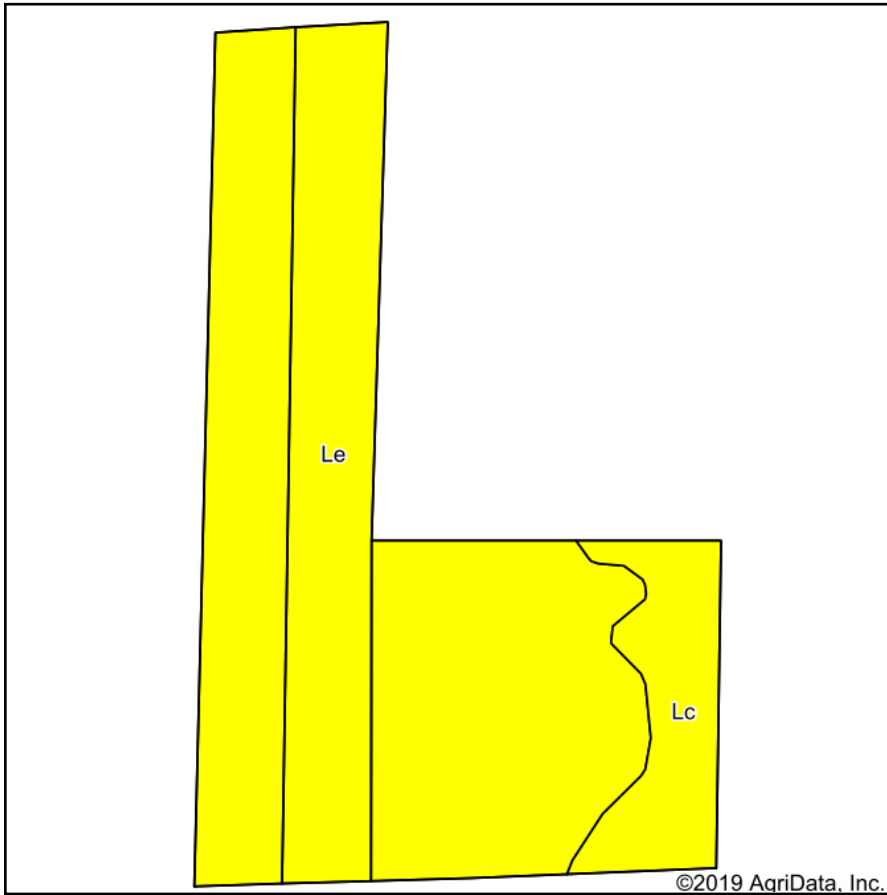
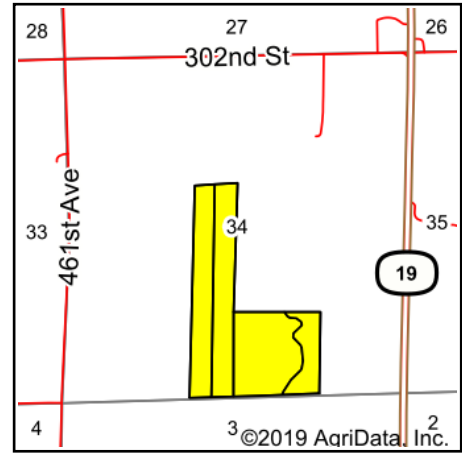


Soils Map



Soils data provided by USDA and NRCS.



State: **South Dakota**
 County: **Clay**
 Location: **34-95N-52W**
 Township: **Riverside**
 Acres: **88.95**
 Date: **8/20/2019**



Maps Provided By:



© AgriData, Inc. 2019

www.AgriDataInc.com



Area Symbol: SD027. Soil Area Version: 21

Code	Soil Description	Acres	Percent of field	PI Legend	Non-Irr Class *c	Irr Class *c	Productivity Index
Le	Lex clay loam, 0 to 2 percent slopes	78.25	88.0%		IIIw	IIIw	70
Lc	Lamo silty clay loam, 0 to 2 percent slopes, sandy substratum	10.70	12.0%		IIIw		69
Weighted Average							69.9

*c: Using Capabilities Class Dominant Condition Aggregation Method
 Soils data provided by USDA and NRCS.