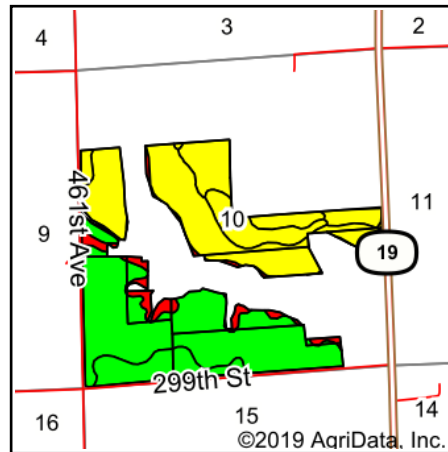


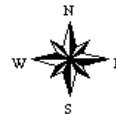
Soils Map



Soils data provided by USDA and NRCS.



State: **South Dakota**
 County: **Clay**
 Location: **10-95N-52W**
 Township: **Riverside**
 Acres: **257.7**
 Date: **8/22/2019**



Area Symbol: SD027. Soil Area Version: 21						
Code	Soil Description	Acres	Percent of field	PI Legend	Non-Irr Class *c	Productivity Index
EdA	Egan-Clarno-Trent complex, 0 to 2 percent slopes	104.45	40.5%	 	Iw	90
Ld	Lamo-Baltic silty clay loams, 0 to 2 percent slopes	51.24	19.9%	 	IIw	64
Cd	Clamo silty clay, 0 to 1 percent slopes	25.52	9.9%	 	IVw	61
EbA	Egan-Clarno-Chancellor complex, 0 to 3 percent slopes	20.83	8.1%	 	Iw	88
DaA	Dalesburg loam, 0 to 2 percent slopes	20.39	7.9%	 	IIs	66
Lt	Luton silty clay, 0 to 2 percent slopes, occasionally flooded	18.47	7.2%	 	IVw	60
EoE	Betts-Ethan loams, 15 to 40 percent slopes	11.30	4.4%	 	VIIe	18
DcB	Davis loam, 2 to 6 percent slopes	2.82	1.1%	 	IIe	87
Cc	Chaska silt loam, channeled	2.20	0.9%	 	VIw	38
DbB	Dalesburg-Dimo complex, 1 to 4 percent slopes	0.48	0.2%	 	IIe	68
Weighted Average						74.1

*c: Using Capabilities Class Dominant Condition Aggregation Method
 Soils data provided by USDA and NRCS.