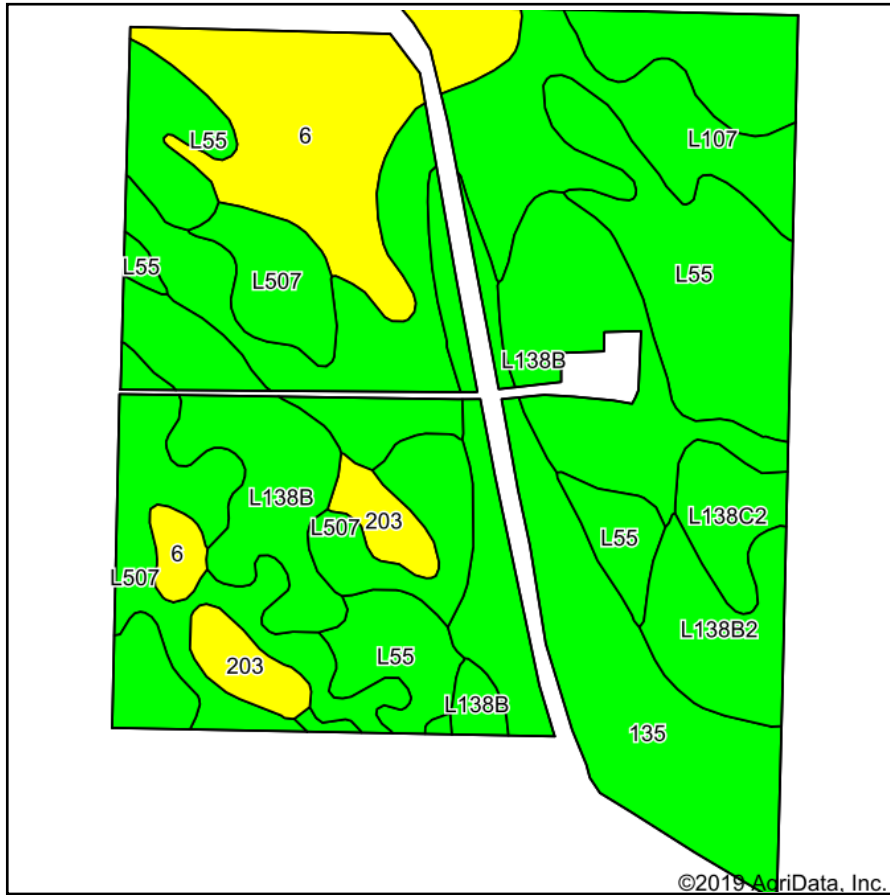
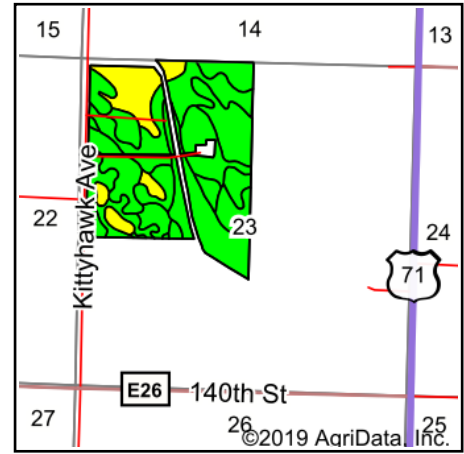


Tillable Soils Map



Soils data provided by USDA and NRCS.



State: **Iowa**
 County: **Carroll**
 Location: **23-85N-35W**
 Township: **Kniest**
 Acres: **166.94**
 Date: **9/5/2019**

PC PEOPLESTM
COMPANY
 INNOVATIVE. REAL ESTATE. SOLUTIONS.

Maps Provided By:

surety[®]
 CUSTOMIZED ONLINE MAPPING
 © AgriData, Inc. 2019 www.AgriDataInc.com



Area Symbol: IA027, Soil Area Version: 23

Code	Soil Description	Acres	Percent of field	CSR2 Legend	Non-Irr Class *c	CSR2**	CSR	*n NCCPI Overall
L55	Nicollet loam, 1 to 3 percent slopes	32.86	19.7%		Ie	91		83
L138B	Clarion loam, Bemis moraine, 2 to 6 percent slopes	27.95	16.7%		Ile	88		79
L107	Webster clay loam, Bemis moraine, 0 to 2 percent slopes	26.12	15.6%		Ilw	88		80
135	Coland clay loam, 0 to 2 percent slopes, occasionally flooded	24.00	14.4%		Ilw	76	78	86
L507	Canisteo clay loam, Bemis moraine, 0 to 2 percent slopes	21.28	12.7%		Ilw	87		79
6	Okoboji silty clay loam, 0 to 1 percent slopes	18.89	11.3%		IIIw	59	57	80
L138B2	Clarion loam, Bemis moraine, 2 to 6 percent slopes, moderately eroded	6.97	4.2%		Ile	85		63
203	Cylinder loam, 0 to 2 percent slopes	4.74	2.8%		Ils	58	75	75
L138C2	Clarion loam, Bemis moraine, 6 to 10 percent slopes, moderately eroded	4.13	2.5%		IIIe	83		60
Weighted Average						82.4	*-	*n 79.8

**IA has updated the CSR values for each county to CSR2.

*- CSR weighted average cannot be calculated on the current soils data, use prior data version for csr values.

*n: The aggregation method is "Weighted Average using major components"

*c: Using Capabilities Class Dominant Condition Aggregation Method

Soils data provided by USDA and NRCS.