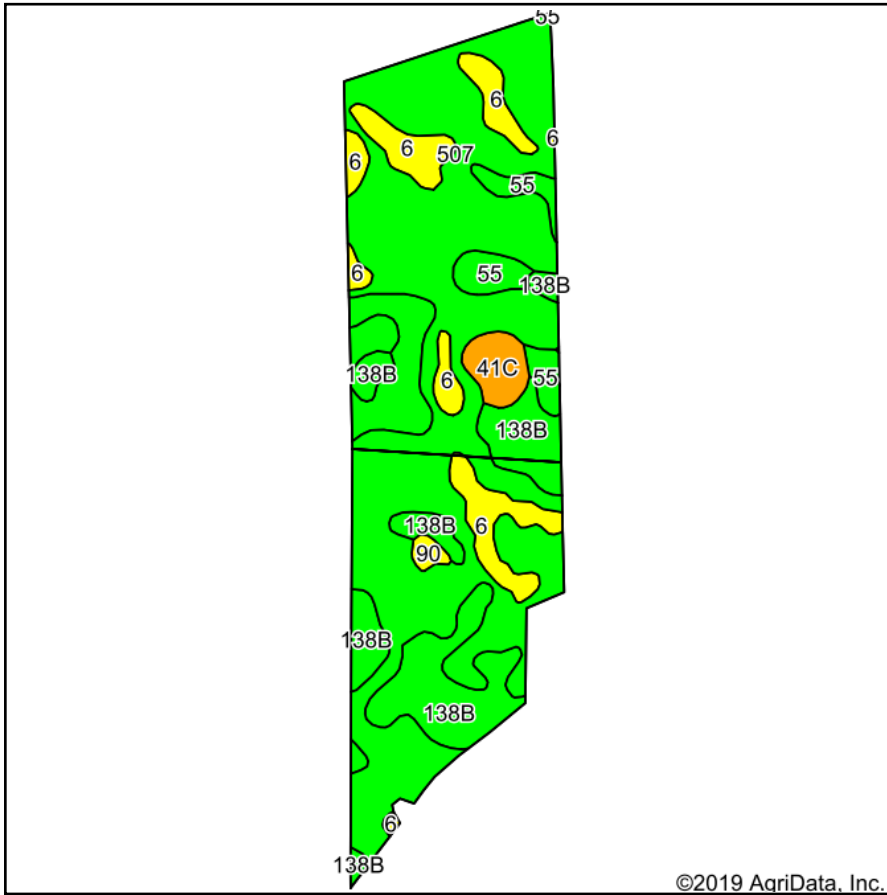
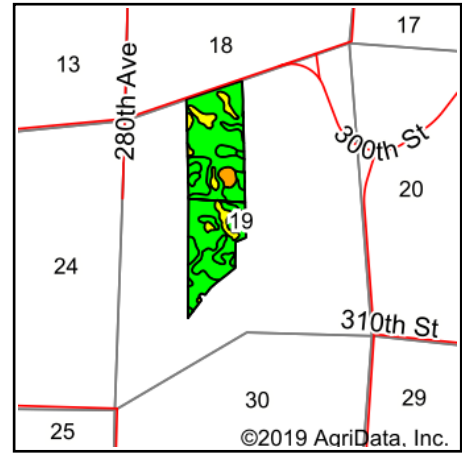


# Soils Map



Soils data provided by USDA and NRCS.

©2019 AgriData, Inc.



State: **Iowa**  
 County: **Clay**  
 Location: **19-97N-35W**  
 Township: **Lake**  
 Acres: **83.01**  
 Date: **9/9/2019**



Maps Provided By:



© AgriData, Inc. 2019

www.AgriDataInc.com



Area Symbol: IA041. Soil Area Version: 28							
Code	Soil Description	Acres	Percent of field	CSR2 Legend	Non-Irr Class *c	CSR2**	CSR
507	Canisteo clay loam, 0 to 2 percent slopes	49.75	59.9%		IIw	84	73
138B	Clarion loam, 2 to 6 percent slopes	14.11	17.0%		Ile	89	74
6	Okoboji silty clay loam, 0 to 1 percent slopes	8.78	10.6%		IIIw	59	55
55	Nicollet clay loam, 1 to 3 percent slopes	7.74	9.3%		Iw	89	82
41C	Sparta loamy sand, 5 to 9 percent slopes	2.11	2.5%		VI s	35	5
90	Okoboji mucky silty clay loam, 0 to 1 percent slopes	0.52	0.6%		IIIw	56	57
<b>Weighted Average</b>						<b>81.3</b>	<b>70.3</b>

\*\*IA has updated the CSR values for each county to CSR2.

\*c: Using Capabilities Class Dominant Condition Aggregation Method  
 Soils data provided by USDA and NRCS.