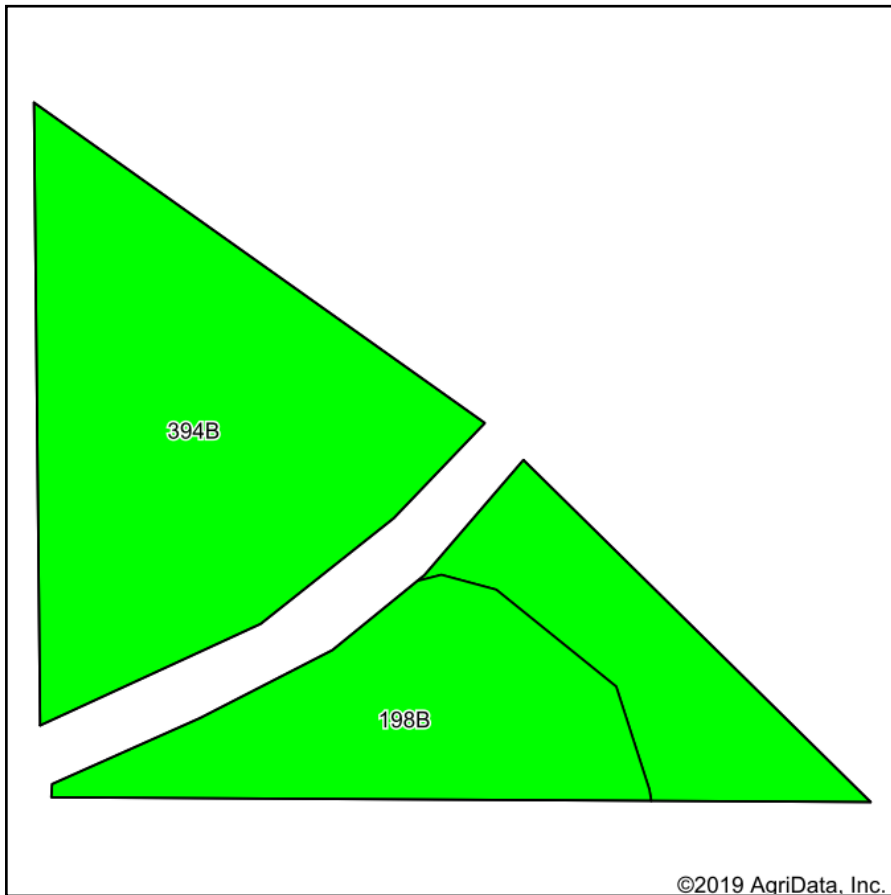
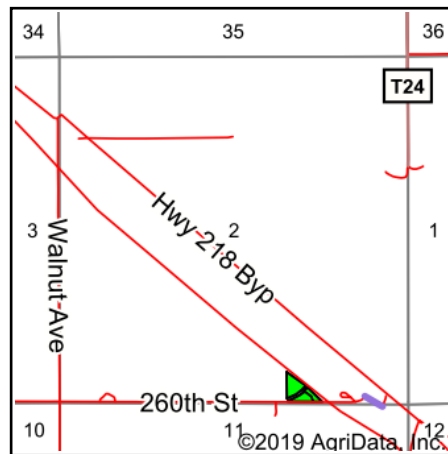


# Total Soils Map



Soils data provided by USDA and NRCS.



State: **Iowa**  
 County: **Floyd**  
 Location: **2-94N-15W**  
 Township: **Riverton**  
 Acres: **2.64**  
 Date: **12/10/2019**

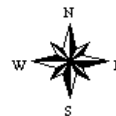


Maps Provided By:



© AgriData, Inc. 2019

www.AgriDataInc.com



| Area Symbol: IA067. Soil Area Version: 25 |                                       |       |                  |             |                  |             |             |                  |
|---|---------------------------------------|-------|------------------|-------------|------------------|-------------|-------------|------------------|
| Code                                      | Soil Description                      | Acres | Percent of field | CSR2 Legend | Non-Irr Class *c | CSR2**      | CSR         | *n NCCPI Overall |
| 394B                                      | Ostrander loam, 2 to 5 percent slopes | 1.91  | 72.3%            |             | Ile              | 88          | 84          | 79               |
| 198B                                      | Floyd loam, 1 to 4 percent slopes     | 0.73  | 27.7%            |             | Ilw              | 89          | 74          | 84               |
| <b>Weighted Average</b>                   |                                       |       |                  |             |                  | <b>88.3</b> | <b>81.2</b> | <b>*n 80.4</b>   |

\*\*IA has updated the CSR values for each county to CSR2.

\*n: The aggregation method is "Weighted Average using major components"

\*c: Using Capabilities Class Dominant Condition Aggregation Method

Soils data provided by USDA and NRCS.