



United States  
Department of  
Agriculture

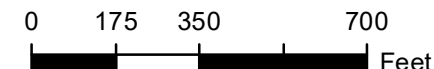
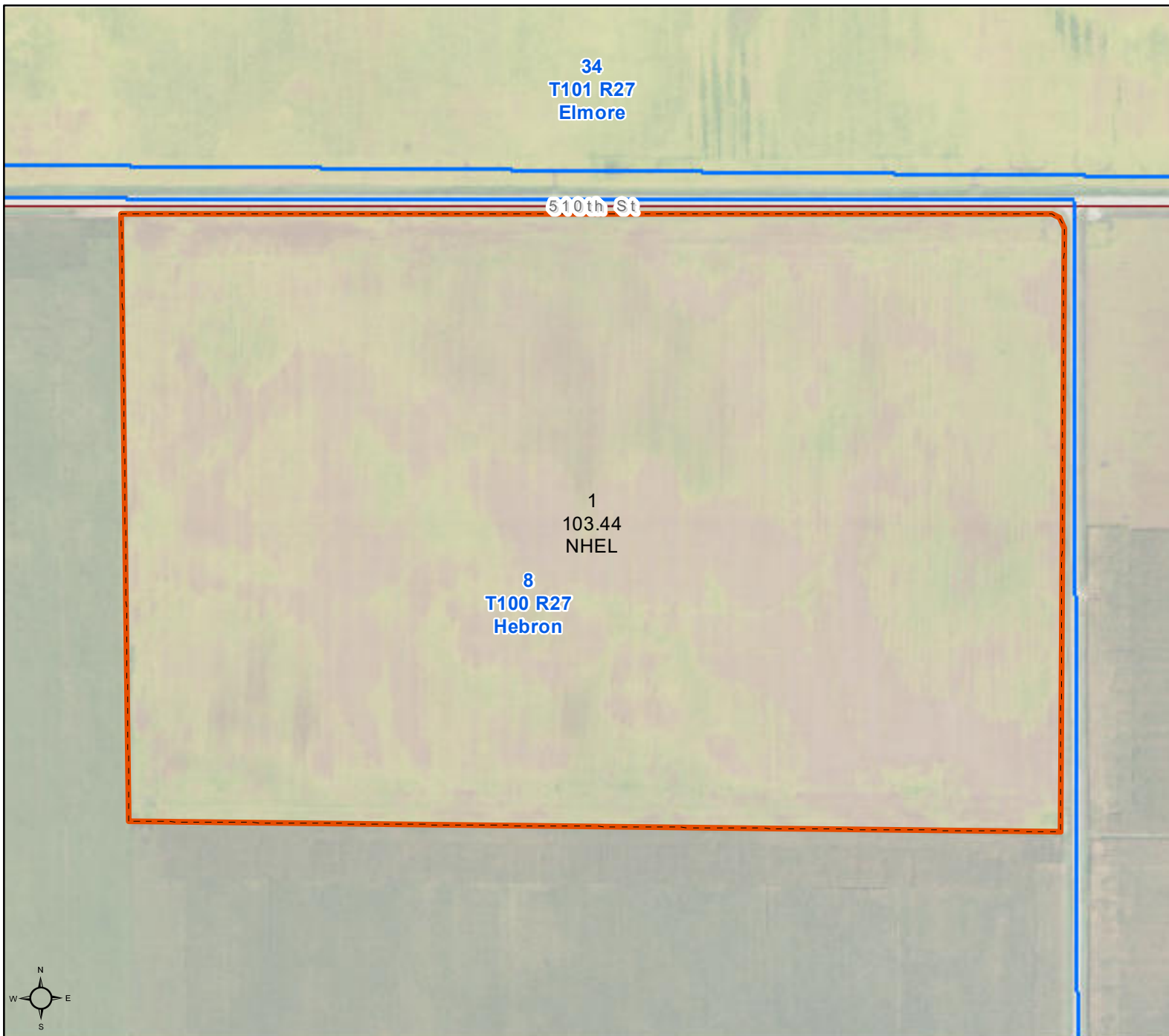
## Faribault County, Minnesota

**Farm 6718**

**Tract 3452**

**2020 Program Year**

Map Created November 12, 2019



Unless otherwise noted:  
 Shares are 100% operator  
 Crops are non-irrigated  
 Corn = yellow for grain  
 Soybeans = common soybeans for grain  
 Wheat = HRS, HRW = Grain  
 Sunflower = Oil, Non-Oil = Grain  
 Oats and Barley = Spring for grain  
 Rye = for grain  
 Peas = process  
 Alfalfa, Mixed Forage AGM, GMA, IGS = for forage  
 Beans = Dry Edible  
 NAG = for GZ  
 Canola = Spring for seed

### Common Land Unit

- Cropland
- Tract Boundary

### Wetland Determination Identifiers

- Restricted Use
- ▼ Limited Restrictions
- Exempt from Conservation Compliance Provisions

Tract Cropland Total: 103.44 acres

United States Department of Agriculture (USDA) Farm Service Agency (FSA) maps are for FSA Program administration only. This map does not represent a legal survey or reflect actual ownership; rather it depicts the information provided directly from the producer and/or National Agricultural Imagery Program (NAIP) imagery. The producer accepts the data 'as is' and assumes all risks associated with its use. USDA-FSA assumes no responsibility for actual or consequential damage incurred as a result of any user's reliance on this data outside FSA Programs. Wetland identifiers do not represent the size, shape, or specific determination of the area. Refer to your original determination (CPA-026 and attached maps) for exact boundaries and determinations or contact USDA Natural Resources Conservation Service (NRCS). This map displays the 2017 NAIP imagery.

Minnesota

Faribault

Report ID: FSA-156EZ

U.S. Department of Agriculture

Farm Service Agency

**Abbreviated 156 Farm Record**

**FARM: 6718**

Prepared: 2/20/20 2:25 PM

Crop Year: 2020

Page: 2 of 2

**DISCLAIMER:** This is data extracted from the web farm database. Because of potential messaging failures in MIDAS, this data is not guaranteed to be an accurate and complete representation of data contained in the MIDAS system, which is the system of record for Farm Records.

Other Producers: None

Tract Number: 3452 Description NE4(8)HEBRON TWP, KOSSUTH CO

FSA Physical Location : Kossuth, IA

ANSI Physical Location: Kossuth, IA

BIA Range Unit Number:

HEL Status: NHEL: no agricultural commodity planted on undetermined fields

Wetland Status: Wetland determinations not complete

WL Violations: None

<b>Farmland</b>	<b>Cropland</b>	<b>DCP Cropland</b>	<b>WBP</b>	<b>WRP/EWP</b>	<b>CRP Cropland</b>	<b>GRP</b>
103.44	103.44	103.44	0.0	0.0	0.0	0.0
<b>State Conservation</b>	<b>Other Conservation</b>	<b>Effective DCP Cropland</b>	<b>Double Cropped</b>	<b>MPL/FWP</b>	<b>Native Sod</b>	
0.0	0.0	103.44	0.0	0.0	0.0	

<b>Crop</b>	<b>Base Acreage</b>	<b>PLC Yield</b>	<b>CCC-505 CRP Reduction</b>
CORN	54.7	179	0.0
SOYBEANS	48.7	46	0.0
<b>Total Base Acres:</b>	103.4		

Owners: SANSGARD FAMILY TRUST

Other Producers: None