

Minnesota

Faribault

Report ID: FSA-156EZ

U.S. Department of Agriculture

Farm Service Agency

Abbreviated 156 Farm Record

FARM: 6718

Prepared: 2/20/20 2:25 PM

Crop Year: 2020

Page: 1 of 2

DISCLAIMER: This is data extracted from the web farm database. Because of potential messaging failures in MIDAS, this data is not guaranteed to be an accurate and complete representation of data contained in the MIDAS system, which is the system of record for Farm Records.

Operator Name

Farm Identifier

Recon Number

00066/6411

Farms Associated with Operator:

ARC/PLC G//F Eligibility: Eligible

CRP Contract Number(s): None

Farmland	Cropland	DCP Cropland	WBP	WRP/EWP	CRP Cropland	GRP	Farm Status	Number of Tracts
262.76	257.71	257.71	0.0	0.0	0.0	0.0	Active	2
State Conservation	Other Conservation	Effective DCP Cropland	Double Cropped	MPL/FPW	Native Sod			
0.0	0.0	257.71	0.0	0.0	0.0			

ARC/PLC

PLC
NONEARC-CO
NONEARC-IC
NONEPLC-Default
NONEARC-CO-Default
CORN , SOYBNARC-IC-Default
NONE

Crop	Base Acreage	PLC Yield	CCC-505 CRP Reduction
CORN	135.6	179	0.0
SOYBEANS	121.3	46	0.0
Total Base Acres:	256.9		

Tract Number: 88 Description SW4(35)ELM

FSA Physical Location : Faribault, MN

ANSI Physical Location: Faribault, MN

BIA Range Unit Number:

HEL Status: NHEL: no agricultural commodity planted on undetermined fields

Wetland Status: Tract does not contain a wetland

WL Violations: None

Farmland	Cropland	DCP Cropland	WBP	WRP/EWP	CRP Cropland	GRP
159.32	154.27	154.27	0.0	0.0	0.0	0.0
State Conservation	Other Conservation	Effective DCP Cropland	Double Cropped	MPL/FPW	Native Sod	
0.0	0.0	154.27	0.0	0.0	0.0	

Crop	Base Acreage	PLC Yield	CCC-505 CRP Reduction
CORN	80.9	179	0.0
SOYBEANS	72.6	46	0.0
Total Base Acres:	153.5		

Owners: PACKER, JEROLYNE LEE
OLSON, STEVENANDERSON, CAROL
SANSARD, CLAIR



United States
Department of
Agriculture

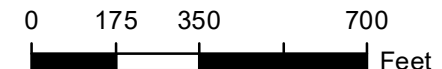
Faribault County, Minnesota

Farm 6718

Tract 88

2020 Program Year

Map Created November 12, 2019



Unless otherwise noted:
Shares are 100% operator
Crops are non-irrigated
Corn = yellow for grain
Soybeans = common soybeans for grain
Wheat = HRS, HRW = Grain
Sunflower = Oil, Non-Oil = Grain
Oats and Barley = Spring for grain
Rye = for grain
Peas = process
Alfalfa, Mixed Forage AGM, GMA, IGS = for forage
Beans = Dry Edible
NAG = for GZ
Canola = Spring for seed

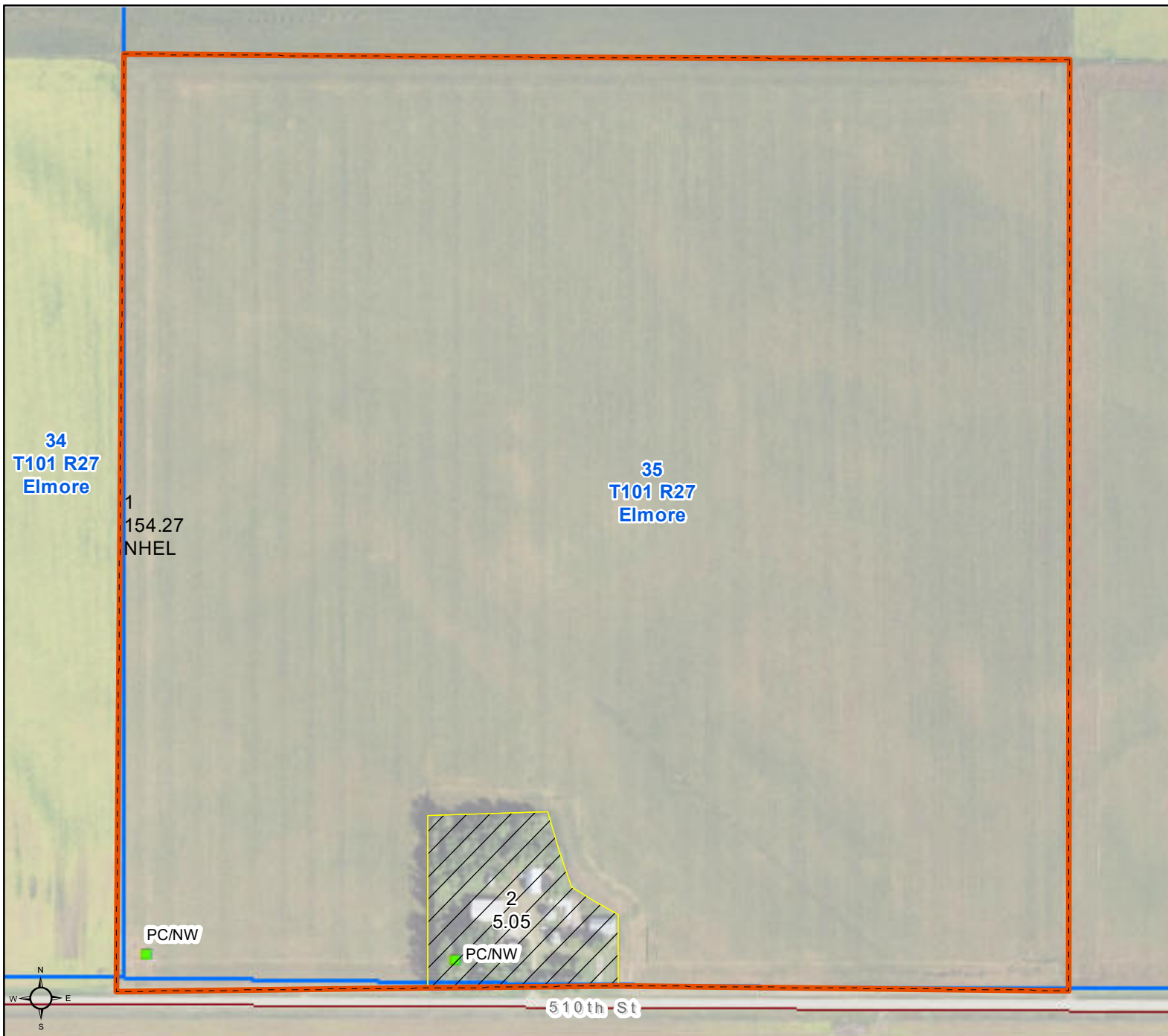
Common Land Unit

- Non-Cropland
- Cropland
- Tract Boundary

Wetland Determination Identifiers

- Restricted Use
- Limited Restrictions
- Exempt from Conservation Compliance Provisions

Tract Cropland Total: 154.27 acres



United States Department of Agriculture (USDA) Farm Service Agency (FSA) maps are for FSA Program administration only. This map does not represent a legal survey or reflect actual ownership; rather it depicts the information provided directly from the producer and/or National Agricultural Imagery Program (NAIP) imagery. The producer accepts the data 'as is' and assumes all risks associated with its use. USDA-FSA assumes no responsibility for actual or consequential damage incurred as a result of any user's reliance on this data outside FSA Programs. Wetland identifiers do not represent the size, shape, or specific determination of the area. Refer to your original determination (CPA-026 and attached maps) for exact boundaries and determinations or contact USDA Natural Resources Conservation Service (NRCS). This map displays the 2017 NAIP imagery.