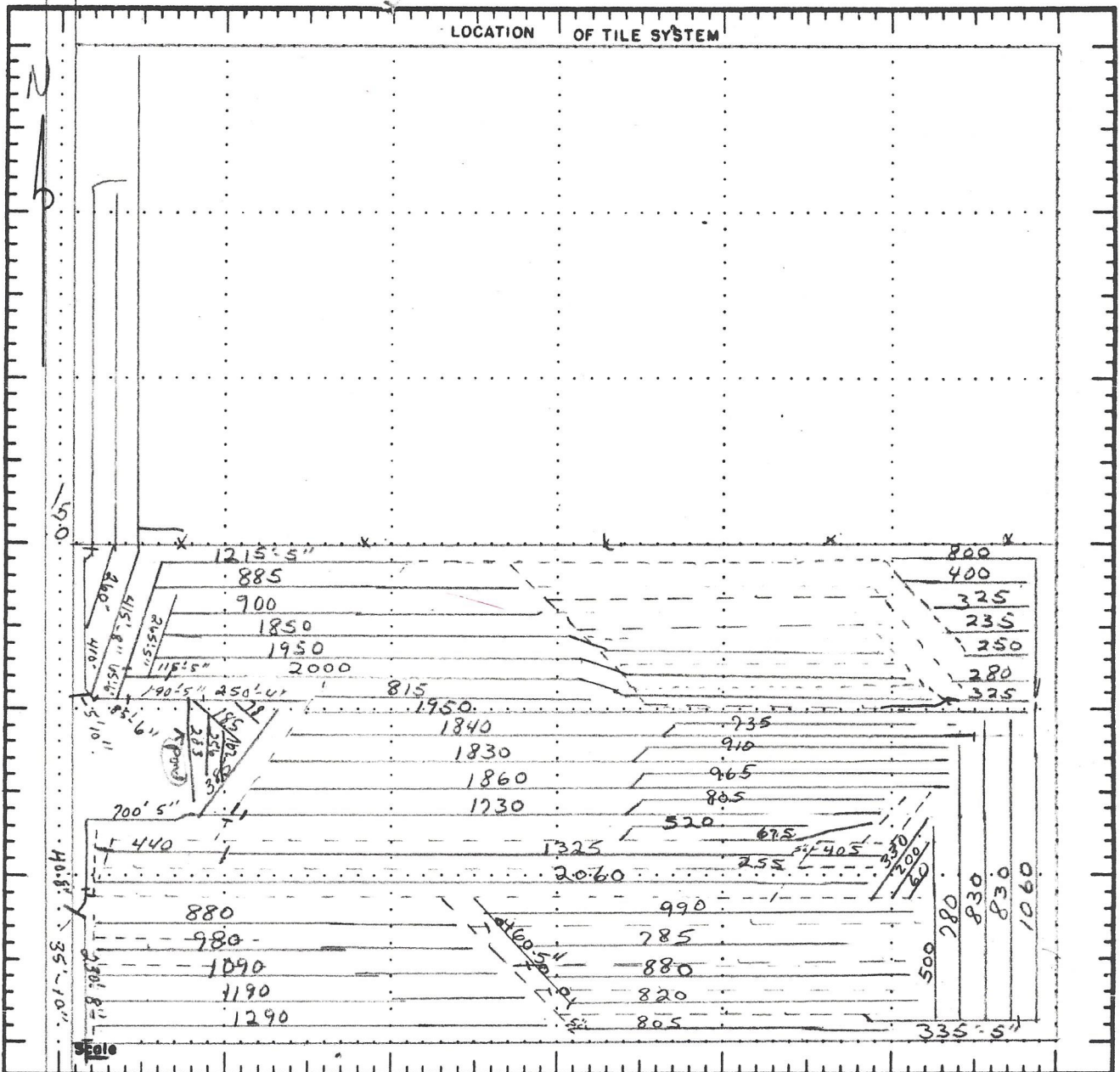


# RASMUSSEN DRAINAGE SERVICE, Ltd.

Don — 334-6138

Judd — 934-3273

Tim — 334-3053



## TILE DRAINAGE MAP

### MATERIALS USED

32 513'	4"
3 490'	5"
150'	6"
685'	8"
40'	10"

### — LEGEND —

- Permanent Fence — — — — — x — — — — — x — — — — — x
- Proposed Tile Line — — — — — ● — — — — — ● — — — — — ●
- Existing Tile Line — — — — — ○ — — — — — ○ — — — — — ○
- Existing Shallow Ditch — — — — — > — — — — — > — — — — — >
- Existing Deep Ditch — — — — — = = = = =

OWNER Dr. John Mechal

TOWNSHIP \_\_\_\_\_

SECTION \_\_\_\_\_ TOWN Lowley

COUNTY Buckhannon STATE Tow

DATE Jan 1982 SIGNED Dr. John Mechal