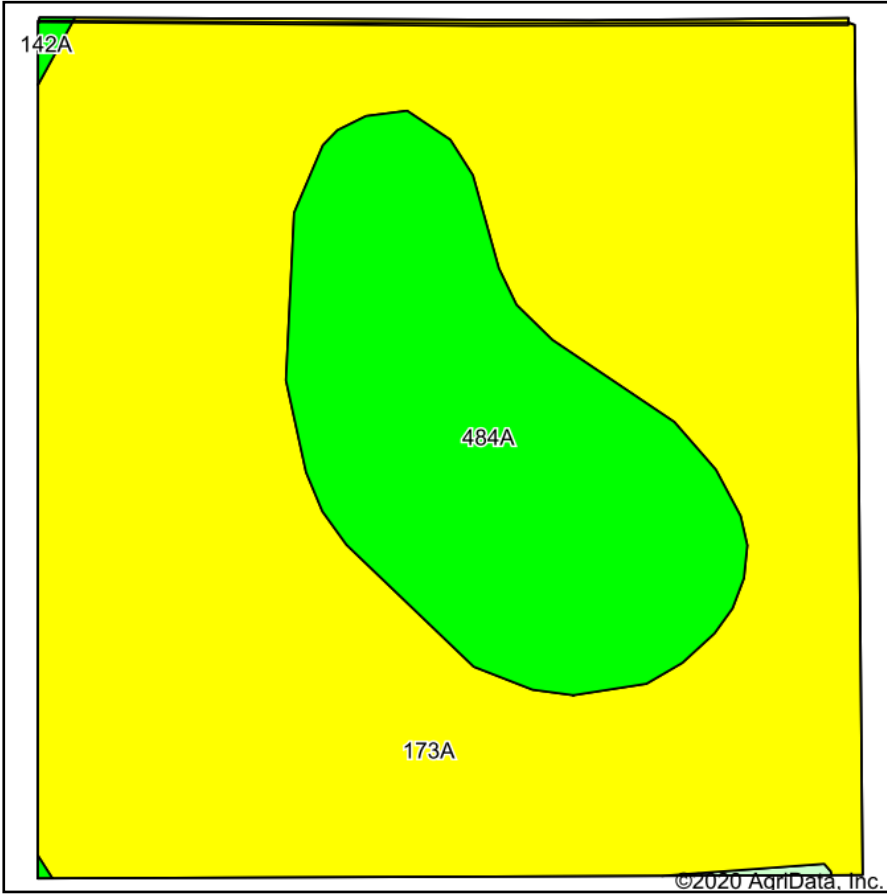
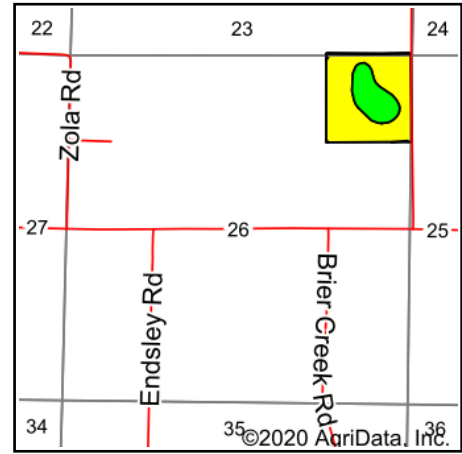


# Soils Map



Soils data provided by USDA and NRCS.



State: **Illinois**  
 County: **Saline**  
 Location: **26-9S-6E**  
 Township: **Harrisburg**  
 Acres: **40**  
 Date: **9/29/2020**



Maps Provided By:



© AgriData, Inc. 2020

www.AgriDataInc.com



Area Symbol: IL165, Soil Area Version: 15					
Code	Soil Description	Acres	Percent of field	Il. State Productivity Index Legend	Crop productivity index for optimum management
173A	McGary silt loam, 0 to 2 percent slope	30.79	77.0%		100
484A	Harco silt loam, 0 to 2 percent slopes	9.07	22.7%		140
142A	Patton silty clay loam, 0 to 2 percent slopes	0.08	0.2%		132
803F	Orthents, 15 to 60 percent slopes	0.06	0.2%		
<b>Weighted Average</b>					<b>109</b>

**Table: Optimum Crop Productivity Ratings for Illinois Soil by K.R. Olson and J.M. Lang, Office of Research, ACES, University of Illinois at Champaign-Urbana.** Version: 1/2/2012 Amended Table S2 B811

Crop yields and productivity indices for optimum management (B811) are maintained at the following NRES web site: <http://soilproductivity.nres.illinois.edu/>

\*\* Indexes adjusted for slope and erosion according to Bulletin 811 Table S3

\*c: Using Capabilities Class Dominant Condition Aggregation Method

Soils data provided by USDA and NRCS. Soils data provided by University of Illinois at Champaign-Urbana.