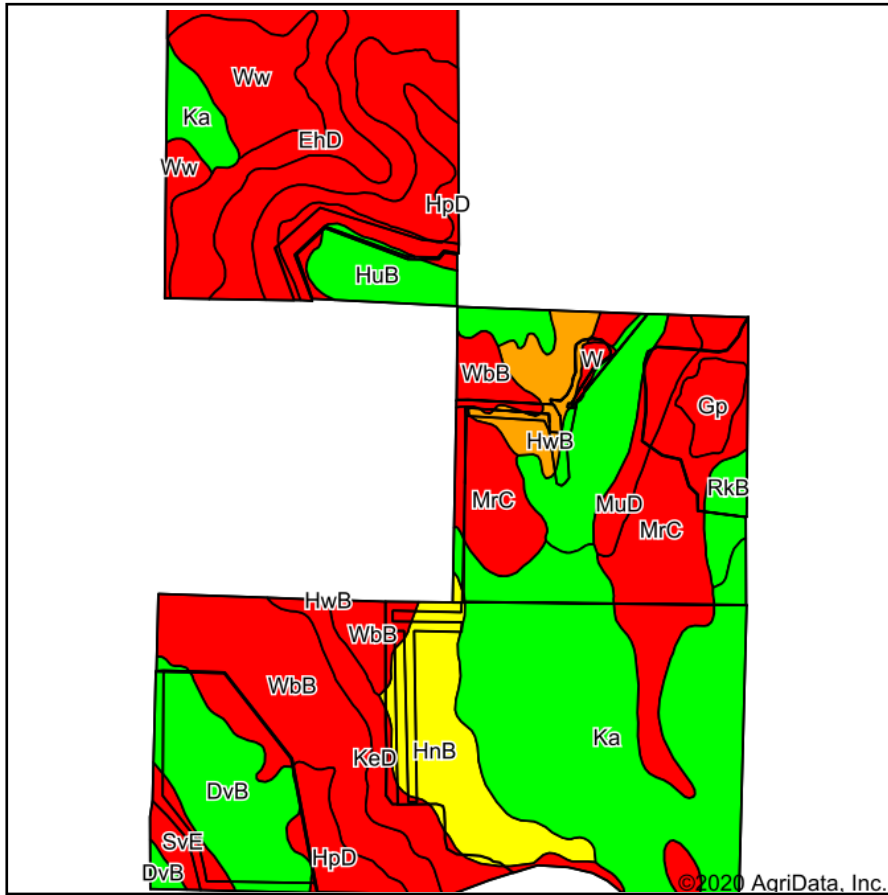
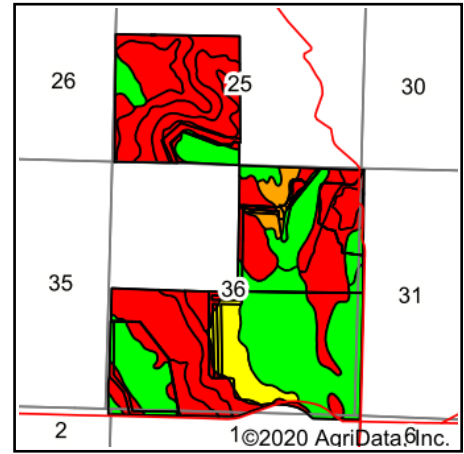


Soils Map



Soils data provided by USDA and NRCS.



State: **South Dakota**
 County: **Mellette**
 Location: **36-40N-32W**
 Township: **Blackpipe**
 Acres: **623.05**
 Date: **8/21/2020**

PC PEOPLES
 COMPANY
 INNOVATIVE. REAL ESTATE. SOLUTIONS.

Maps Provided By:

surety
 CUSTOMIZED ONLINE MAPPING
 © AgriData, Inc. 2020 www.AgriDataInc.com



Area Symbol: SD095. Soil Area Version: 19

Code	Soil Description	Acres	Percent of field	PI Legend	Non-Irr Class *c	Productivity Index
Ka	Kadoka-Kube silt loams	138.14	22.2%		IIc	80
WbB	Wanblee-Wortman association, 0 to 5 percent slopes	102.26	16.4%		VIIs	26
MrC	Murdo gravelly loam, 2 to 9 percent slopes	64.59	10.4%		IVe	15
DvB	Duroc and Kadoka silt loams, 2 to 5 percent slopes	63.02	10.1%		IIe	82
KeD	Keota-Epping silt loams, 9 to 21 percent slopes	51.22	8.2%		VIe	18
HnB	Huggins silt loam, 2 to 5 percent slopes	38.24	6.1%		IIIe	67
EhD	Epping-Huggins silt loams, 5 to 15 percent slopes	31.39	5.0%		VIe	29
Ww	Wortman-Wanblee silt loams, 0 to 6 percent slopes	29.07	4.7%		IVs	25
HpD	Huggins-Epping silt loams, 5 to 15 percent slopes	27.42	4.4%		VIe	31
HuB	Huggins-Kadoka silt loams, 2 to 5 percent slopes	19.96	3.2%		IIIe	73
HwB	Huggins and Wortman silt loams, 2 to 5 percent slopes	15.93	2.6%		IIIe	50
MuD	Murdo-Schamber gravelly loams, 9 to 15 percent slopes	12.64	2.0%		VIe	8
SvE	Schamber-Murdo gravelly loams, 15 to 25 percent slopes	8.46	1.4%		VIIs	4
Gp	Pits, gravel	8.34	1.3%		VIIIs	0
RkB	Ree and Keya loams, 2 to 5 percent slopes	7.78	1.2%		IIe	83
Kh	Kolls and Hoven soils	2.80	0.4%		Vw	20
W	Water	1.79	0.3%		VIII	0
Weighted Average						46.4

*c: Using Capabilities Class Dominant Condition Aggregation Method
 Soils data provided by USDA and NRCS.