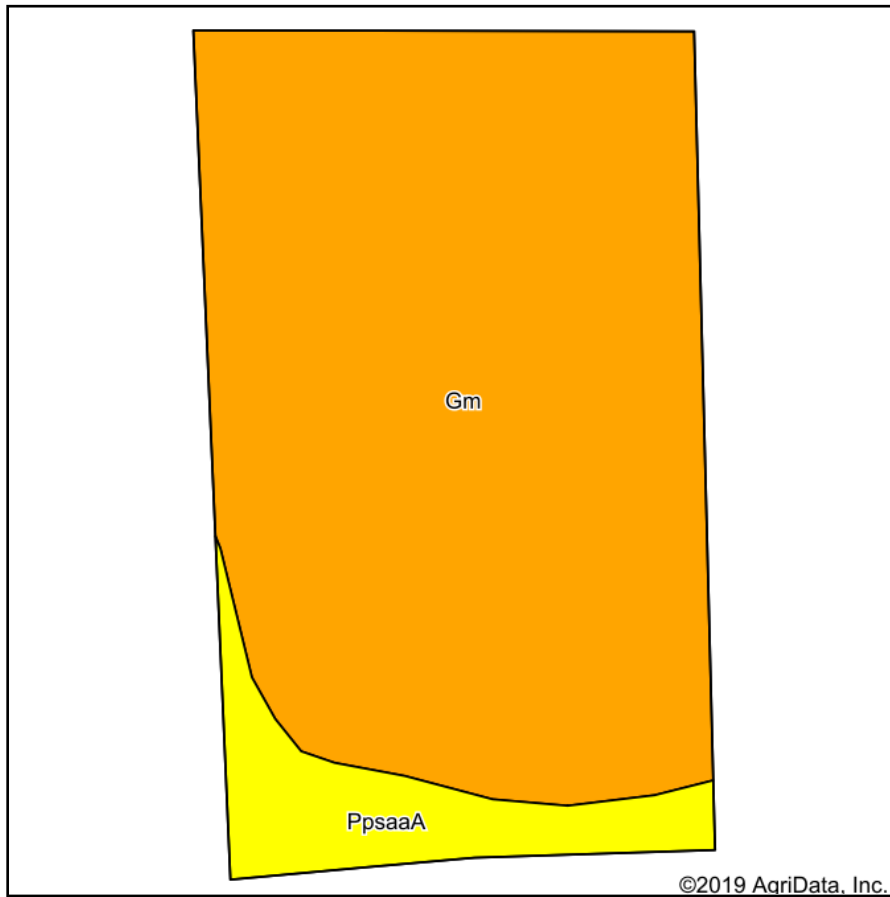
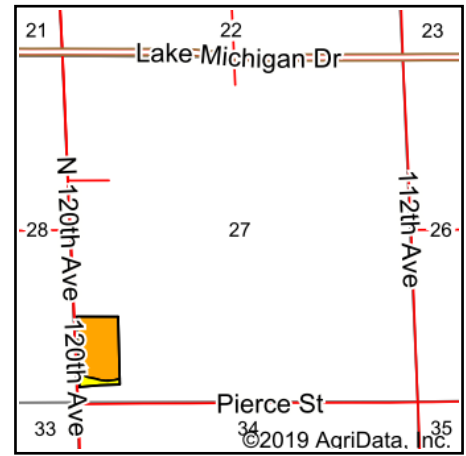


Tillable Soils Map



Soils data provided by USDA and NRCS.



State: **Michigan**
 County: **Ottawa**
 Location: **27-7N-15W**
 Township: **Robinson**
 Acres: **15.6**
 Date: **3/11/2020**

PC PEOPLES
 COMPANY
 INNOVATIVE. REAL ESTATE. SOLUTIONS.

Maps Provided By:

surety
 CUSTOMIZED ONLINE MAPPING
 © AgriData, Inc. 2019 www.AgriDataInc.com



Area Symbol: M1139, Soil Area Version: 14

Code	Soil Description	Acres	Percent of field	Non-Irr Class Legend	Non-Irr Class *c	*n NCCPI Overall
Gm	Granby loamy sand, lake plain, 0 to 2 percent slopes	13.90	89.1%		IVw	40
PpsaaA	Pipestone-Covert-Saugatuck sands, 0 to 3 percent slopes	1.70	10.9%		IIIw	37
Weighted Average						*n 39.7

*n: The aggregation method is "Weighted Average using major components"

*c: Using Capabilities Class Dominant Condition Aggregation Method

Soils data provided by USDA and NRCS.