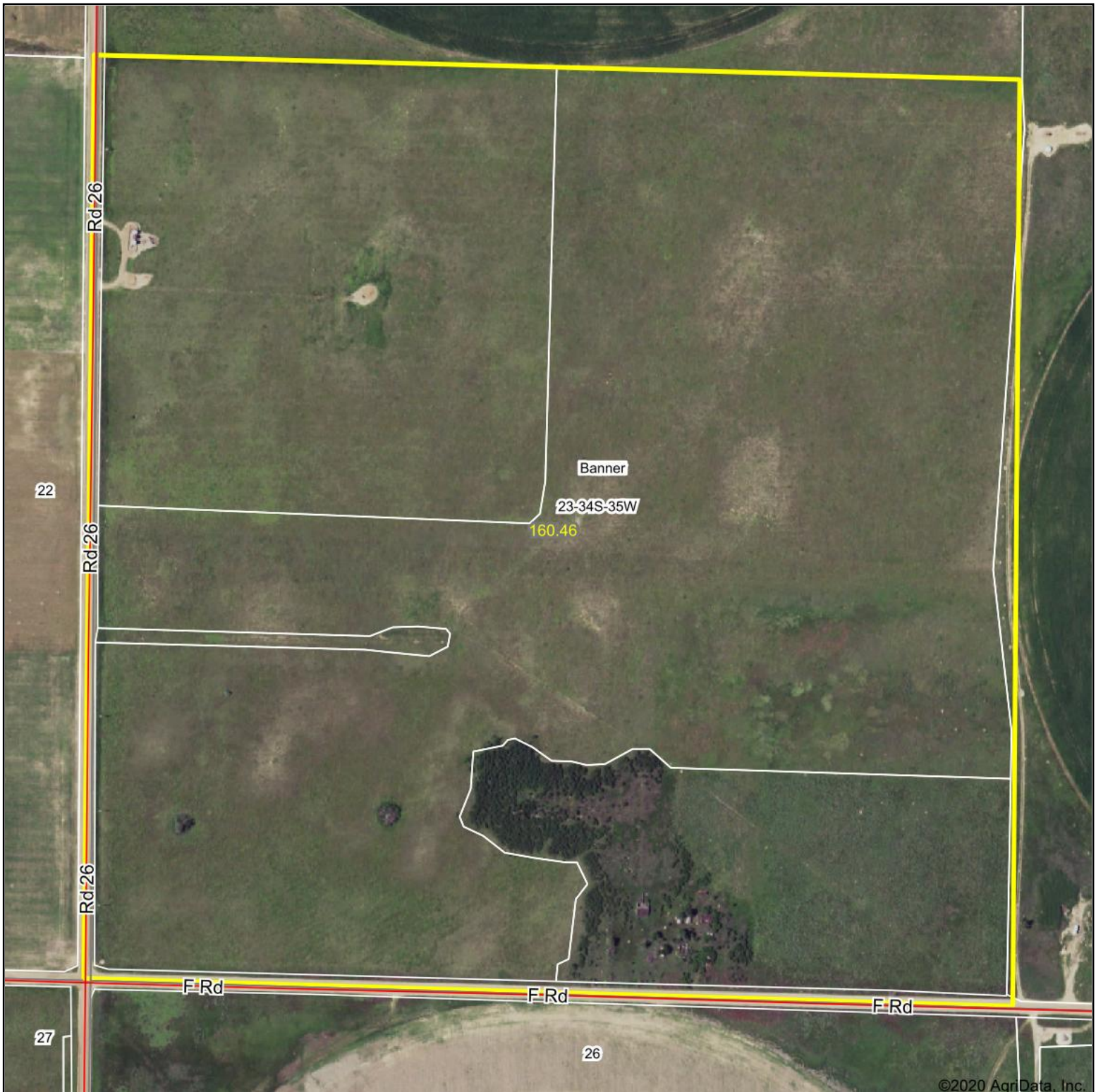


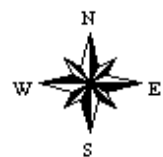
Aerial Map



Map Center: 37° 4' 19.16, -101° 5' 55.6



23-34S-35W
Stevens County
Kansas



11/18/2020

Maps Provided By:
 **surety**[®]
CUSTOMIZED ONLINE MAPPING
© AgriData, Inc. 2020 www.AgriDataInc.com

Field borders provided by Farm Service Agency as of 5/21/2008.