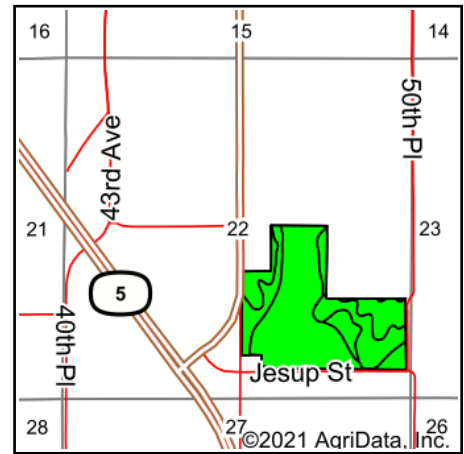
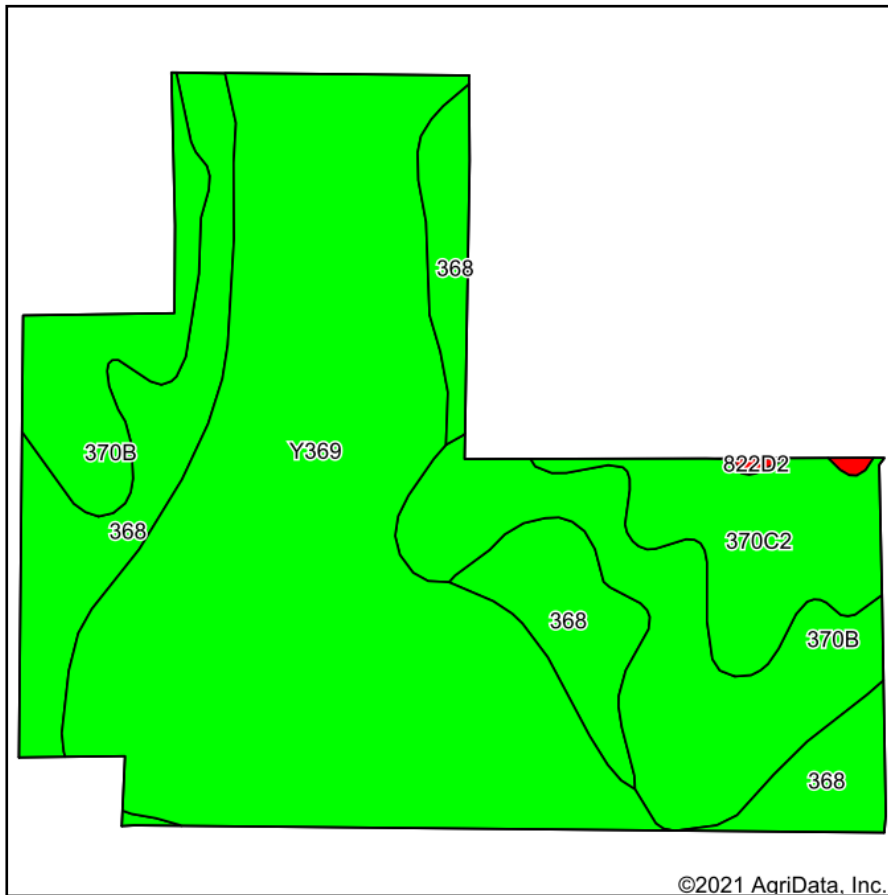


Tillable Soils Map



State: **Iowa**
 County: **Marion**
 Location: **22-76N-21W**
 Township: **Pleasant Grove**
 Acres: **85.65**
 Date: **6/21/2021**



Maps Provided By:



Area Symbol: IA125, Soil Area Version: 29

Code	Soil Description	Acres	Percent of field	CSR2 Legend	Non-Irr Class *c	*i Corn	*i Soybeans	CSR2**	CSR	*n NCCPI Overall
Y369	Winterset silty clay loam, 0 to 2 percent slopes	43.94	51.3%		Ilw	0	0	83		78
370B	Sharpsburg silty clay loam, 2 to 5 percent slopes	17.20	20.1%		Ile	225.6	65.4	91	87	93
368	Macksburg silty clay loam, 0 to 2 percent slopes	17.16	20.0%		Iw	230.4	66.8	93	95	87
370C2	Sharpsburg silty clay loam, 5 to 9 percent slopes, eroded	7.15	8.3%		Ille	204.8	59.4	80	67	84
822D2	Lamoni silty clay loam, 9 to 14 percent slopes, moderately eroded	0.20	0.2%		IVe	100.8	29.2	10	15	65
Weighted Average						108.8	31.5	86.2	*-	*n 83.3

**IA has updated the CSR values for each county to CSR2.

*- CSR weighted average cannot be calculated on the current soils data, use prior data version for csr values.

*i Yield data provided by the ISPAID Database version 8.1.1 developed by IA State University.

*n: The aggregation method is "Weighted Average using all components"

*c: Using Capabilities Class Dominant Condition Aggregation Method

Soils data provided by USDA and NRCS.