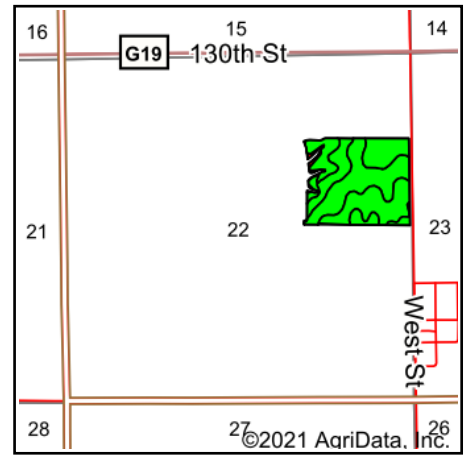
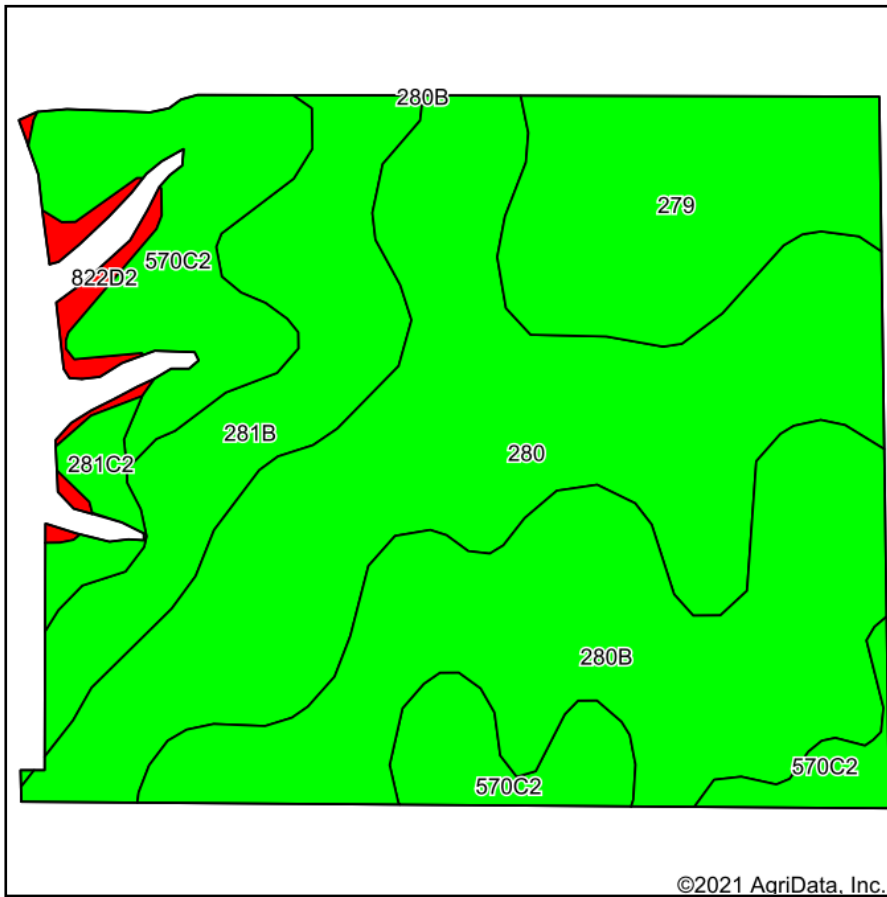


Tillable Soils Map



State: **Iowa**
 County: **Keokuk**
 Location: **22-77N-13W**
 Township: **Prairie**
 Acres: **45.78**
 Date: **8/5/2021**

PC PEOPLES
 COMPANY
 INNOVATIVE. REAL ESTATE. SOLUTIONS.

Maps Provided By:

surety
 CUSTOMIZED ONLINE MAPPING
 © AgriData, Inc. 2021 www.AgriDataInc.com



Area Symbol: IA107, Soil Area Version: 25

Code	Soil Description	Acres	Percent of field	CSR2 Legend	Non-Irr Class *c	CSR2**	CSR
280	Mahaska silty clay loam, 0 to 2 percent slopes	14.98	32.7%		Iw	94	95
280B	Mahaska silty clay loam, 2 to 5 percent slopes	11.15	24.4%		Ile	89	90
570C2	Nira silty clay loam, 5 to 9 percent slopes, moderately eroded	6.69	14.6%		IIle	71	67
279	Taintor silty clay loam, 0 to 2 percent slopes	5.92	12.9%		IIw	83	88
281B	Otley silty clay loam, 2 to 5 percent slopes	5.48	12.0%		Ile	91	90
281C2	Otley silty clay loam, 5 to 9 percent slopes, eroded	0.87	1.9%		IIle	82	70
822D2	Lamoni silty clay loam, 9 to 14 percent slopes, moderately eroded	0.69	1.5%		IVe	13	15
Weighted Average						86.2	86.5

**IA has updated the CSR values for each county to CSR2.

*c: Using Capabilities Class Dominant Condition Aggregation Method
 Soils data provided by USDA and NRCS.