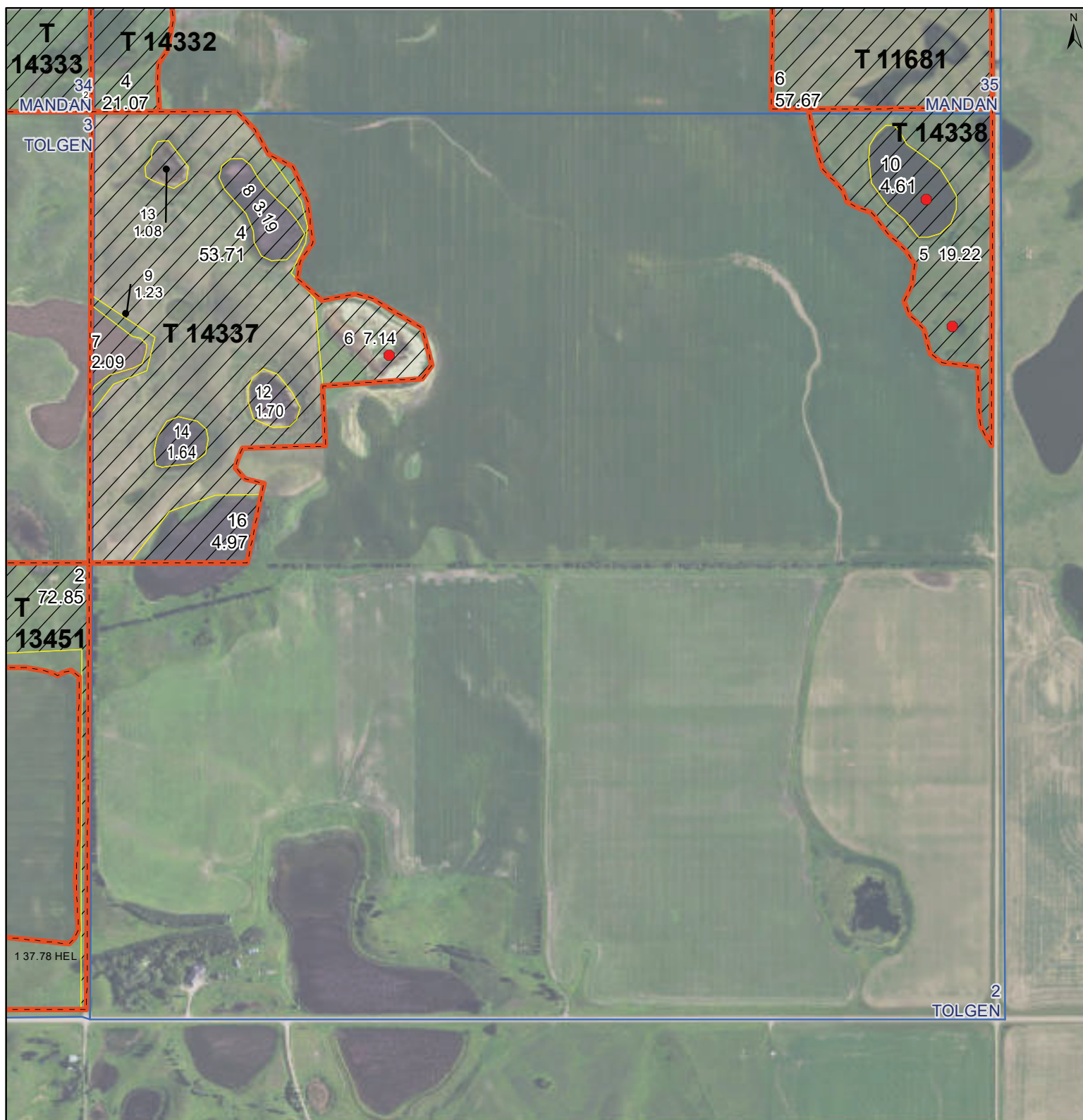




United States
Department of
Agriculture

Ward County, North Dakota

Farm 13674



Common Land Unit PLSS

 Non-Cropland

 Tract Boundary

Wetland Determination Identifiers

● Restricted Use

▼ Limited Restrictions

■ Exempt from Conservation

■ Compliance Provisions

Unless Otherwise Noted:

All crops are for grain

All crops are non-irrigated

Shares are 100% to Operator

2021 Program Year

Map Created May 11, 2021

S2 T154N R86W

0 275 550 1,100
Feet

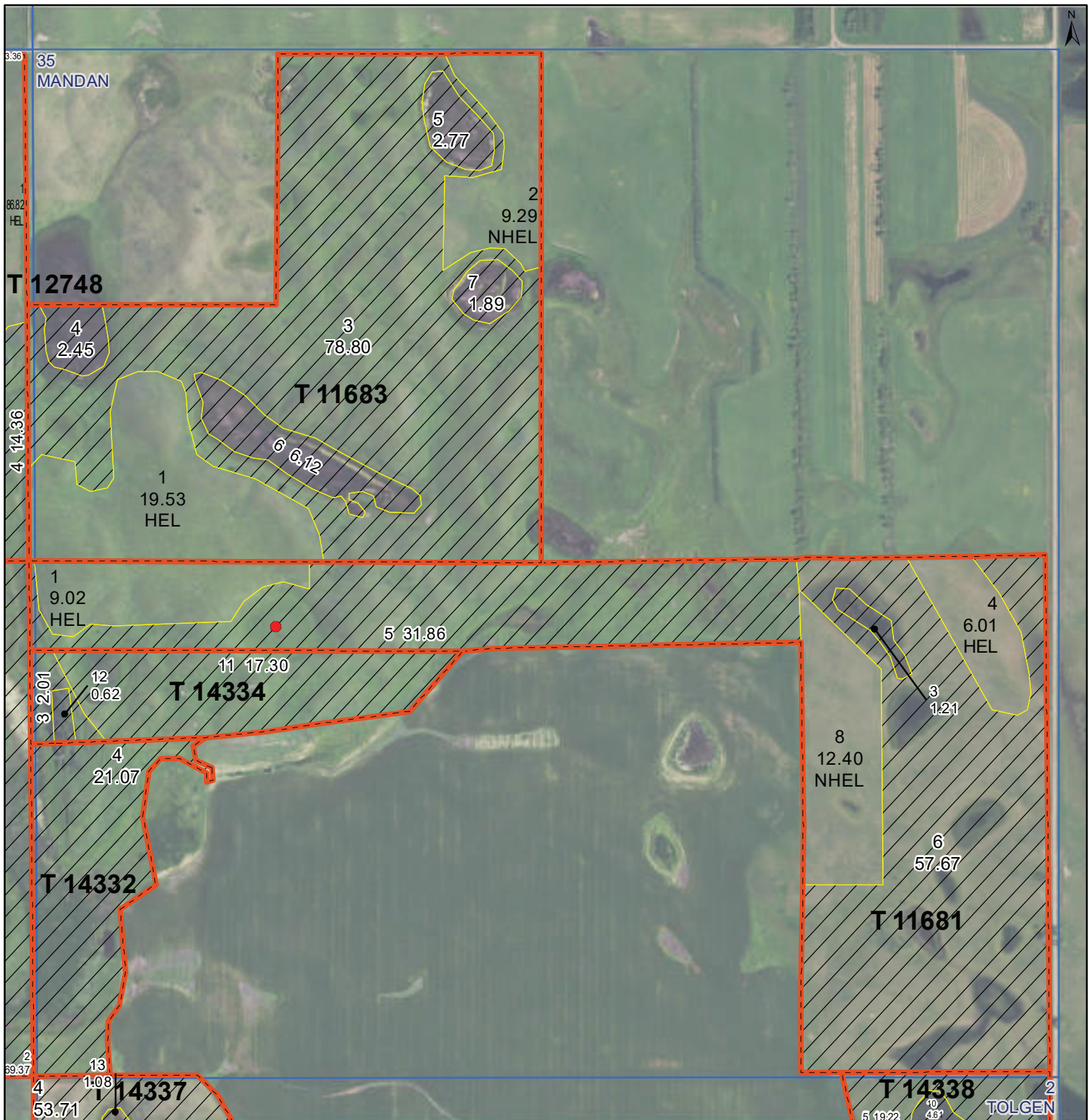
United States Department of Agriculture (USDA) Farm Service Agency (FSA) maps are for FSA Program administration only. This map does not represent a legal survey or reflect actual ownership; rather it depicts the information provided directly from the producer and/or National Agricultural Imagery Program (NAIP) imagery. The producer accepts the data 'as is' and assumes all risks associated with its use. USDA-FSA assumes no responsibility for actual or consequential damage incurred as a result of any user's reliance on this data outside FSA Programs. Wetland identifiers do not represent the size, shape, or specific determination of the area. Refer to your original determination (CPA-026 and attached maps) for exact boundaries and determinations or contact USDA Natural Resources Conservation Service (NRCS). **The imagery displayed on this map was collected in calendar year 2020.**



United States
Department of
Agriculture

Ward County, North Dakota

Farm 13674



Common Land Unit

- Tract Boundary
- PLSS
- Non-Cropland
- Cropland

Wetland Determination Identifiers

- Restricted Use
- Limited Restrictions
- Exempt from Conservation
- Compliance Provisions

Unless Otherwise Noted:
All crops are for grain
All crops are non-irrigated
Shares are 100% to Operator

2021 Program Year
Map Created May 11, 2021

S35 T155N R86W

0 240 480 960
Feet

United States Department of Agriculture (USDA) Farm Service Agency (FSA) maps are for FSA Program administration only. This map does not represent a legal survey or reflect actual ownership; rather it depicts the information provided directly from the producer and/or National Agricultural Imagery Program (NAIP) imagery. The producer accepts the data 'as is' and assumes all risks associated with its use. USDA-FSA assumes no responsibility for actual or consequential damage incurred as a result of any user's reliance on this data outside FSA Programs. Wetland identifiers do not represent the size, shape, or specific determination of the area. Refer to your original determination (CPA-026 and attached maps) for exact boundaries and determinations or contact USDA Natural Resources Conservation Service (NRCS). **The imagery displayed on this map was collected in calendar year 2020.**