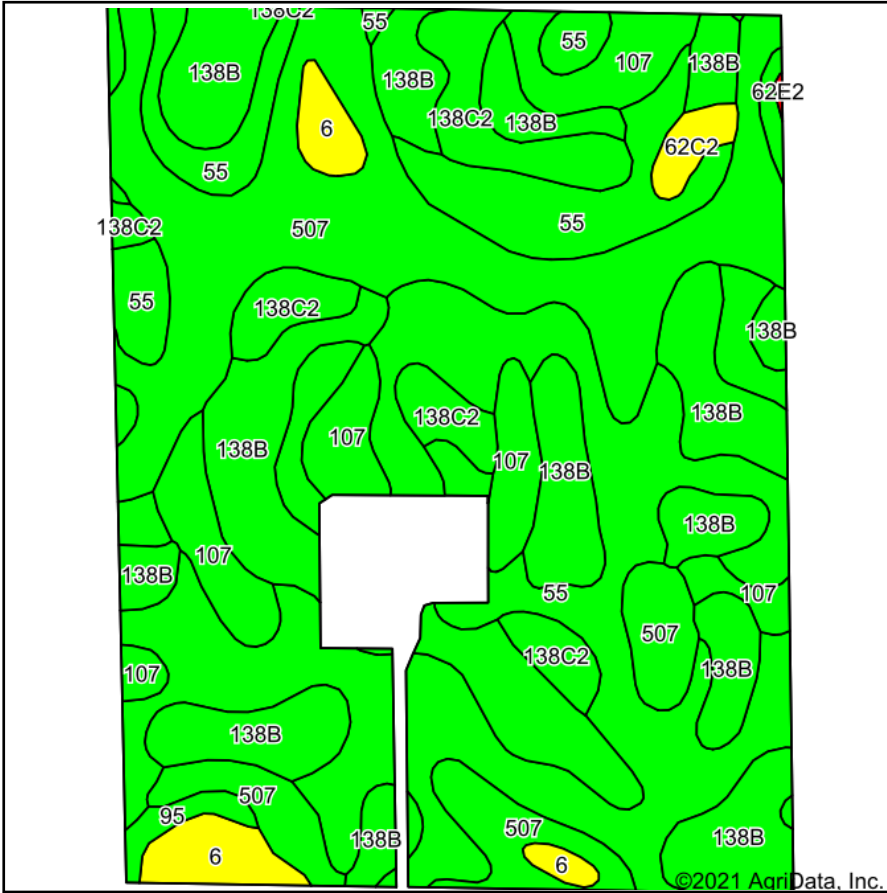
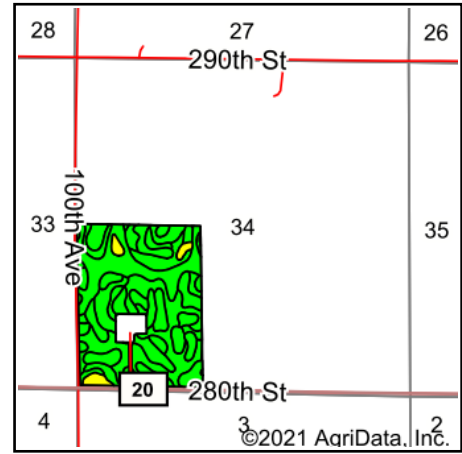


Tillable Soils Map



Soils data provided by USDA and NRCS.



State: **Iowa**
 County: **Kossuth**
 Location: **34-97N-29W**
 Township: **Burt**
 Acres: **109.47**
 Date: **9/10/2021**



Maps Provided By:



© AgriData, Inc. 2021

www.AgriDataInc.com



Area Symbol: IA109, Soil Area Version: 27

Code	Soil Description	Acres	Percent of field	CSR2 Legend	Non-Irr Class *c	CSR2**	CSR	*n NCCPI Overall	*n NCCPI Corn	*n NCCPI Soybeans
55	Nicollet clay loam, 1 to 3 percent slopes	36.46	33.3%		lw	89	85	82	81	82
138B	Clarion loam, 2 to 6 percent slopes	28.22	25.8%		lle	89	77	84	80	84
507	Canisteo clay loam, 0 to 2 percent slopes	24.32	22.2%		llw	84	75	81	71	81
107	Webster clay loam, 0 to 2 percent slopes	8.83	8.1%		llw	86	80	83	78	82
138C2	Clarion loam, 6 to 10 percent slopes, moderately eroded	6.66	6.1%		llle	83	62	73	70	73
6	Okoboji silty clay loam, 0 to 1 percent slopes	2.98	2.7%		lllw	59	54	76	74	74
62C2	Storden loam, 6 to 10 percent slopes, moderately eroded	0.87	0.8%		llle	64	49	70	66	70
95	Harps clay loam, 0 to 2 percent slopes	0.75	0.7%		llw	72	60	82	70	82
485B	Spillville loam, 2 to 5 percent slopes	0.38	0.3%		lle	88	77	89	87	87
Weighted Average						86.1	77.6	*n 81.6	*n 77.2	*n 81.5

**IA has updated the CSR values for each county to CSR2.

*n: The aggregation method is "Weighted Average using all components"

*c: Using Capabilities Class Dominant Condition Aggregation Method

Soils data provided by USDA and NRCS.