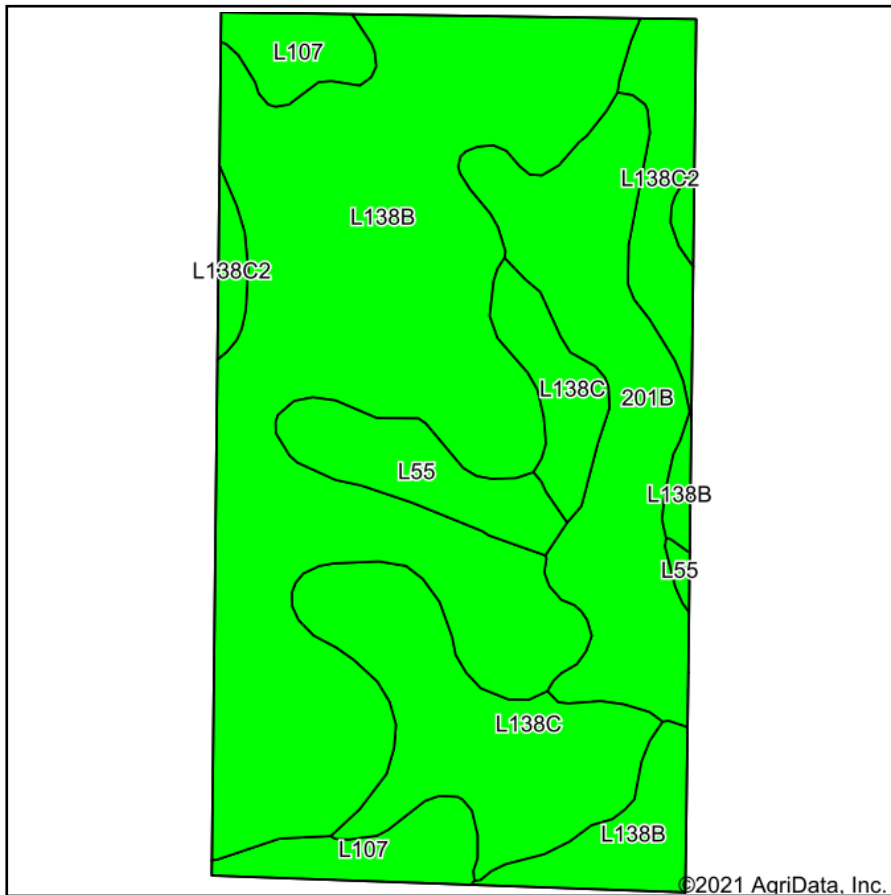
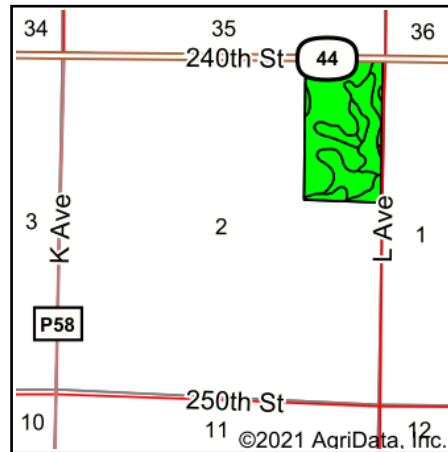


# Soils Map



Soils data provided by USDA and NRCS.



State: **Iowa**  
 County: **Dallas**  
 Location: **2-79N-28W**  
 Township: **Colfax**  
 Acres: **66.9**  
 Date: **10/1/2021**



Maps Provided By:



© AgriData, Inc. 2021 [www.AgriDataInc.com](http://www.AgriDataInc.com)

Area Symbol: IA049, Soil Area Version: 26

Code	Soil Description	Acres	Percent of field	CSR2 Legend	Non-Irr Class *c	*i Corn	*i Soybeans	CSR2**	CSR	*n NCCPI Overall
L138B	Clarion loam, Bemis moraine, 2 to 6 percent slopes	35.33	52.8%		Ile	80	23.2	88		80
L138C	Clarion loam, Bemis moraine, 6 to 10 percent slopes	10.54	15.8%		IIle	0	0	84		77
201B	Coland-Terril complex, 2 to 5 percent slopes	10.31	15.4%		IIlw	208	60.3	74	68	83
L107	Webster clay loam, Bemis moraine, 0 to 2 percent slopes	3.84	5.7%		IIlw	0	0	88		84
L138C2	Clarion loam, Bemis moraine, 6 to 10 percent slopes, moderately eroded	3.59	5.4%		IIIle	0	0	83		67
L55	Nicollet loam, 1 to 3 percent slopes	3.29	4.9%		Ile	0	0	91		85
<b>Weighted Average</b>						<b>74.3</b>	<b>21.5</b>	<b>85.1</b>	<b>*-</b>	<b>*n 79.8</b>

\*\*IA has updated the CSR values for each county to CSR2.

\*- CSR weighted average cannot be calculated on the current soils data, use prior data version for csr values.

\*i Yield data provided by the ISPAID Database version 8.1.1 developed by IA State University.

\*n: The aggregation method is "Weighted Average using all components"

\*c: Using Capabilities Class Dominant Condition Aggregation Method

Soils data provided by USDA and NRCS.