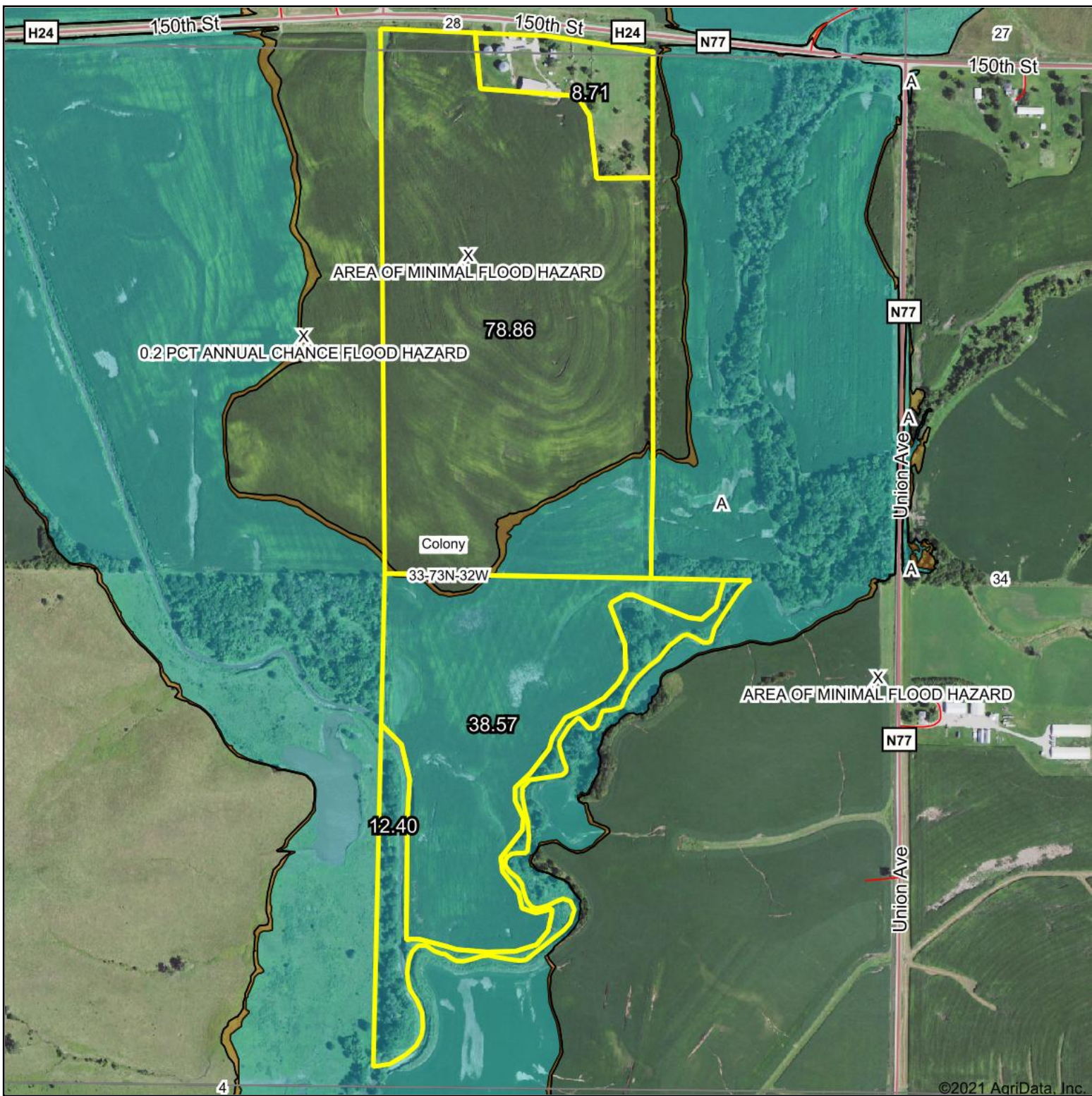
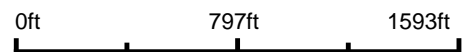


Aerial Map



Map Center: 41° 4' 43.9, -94° 32' 3.51



33-73N-32W
Adams County
Iowa



10/29/2021

Maps Provided By:
 **surety**
CUSTOMIZED ONLINE MAPPING
© AgriData, Inc. 2021 www.AgriDataInc.com

Flood related information provided by FEMA