



HUNTERSVILLE STATE FOREST
33,964 ACRES • ESTABLISHED 1963

FOREST LANDSCAPE: This forest lies entirely within the coniferous forest biome. Topography contains a mix of glacial features such as hilly moraines and drumlins, and more level outwash and till plains. Historically, fires occurred every 10 to 40 years, and today jack pine, quaking aspen, and paper birch dominate. Stands of red and white pine are also found in the forest.

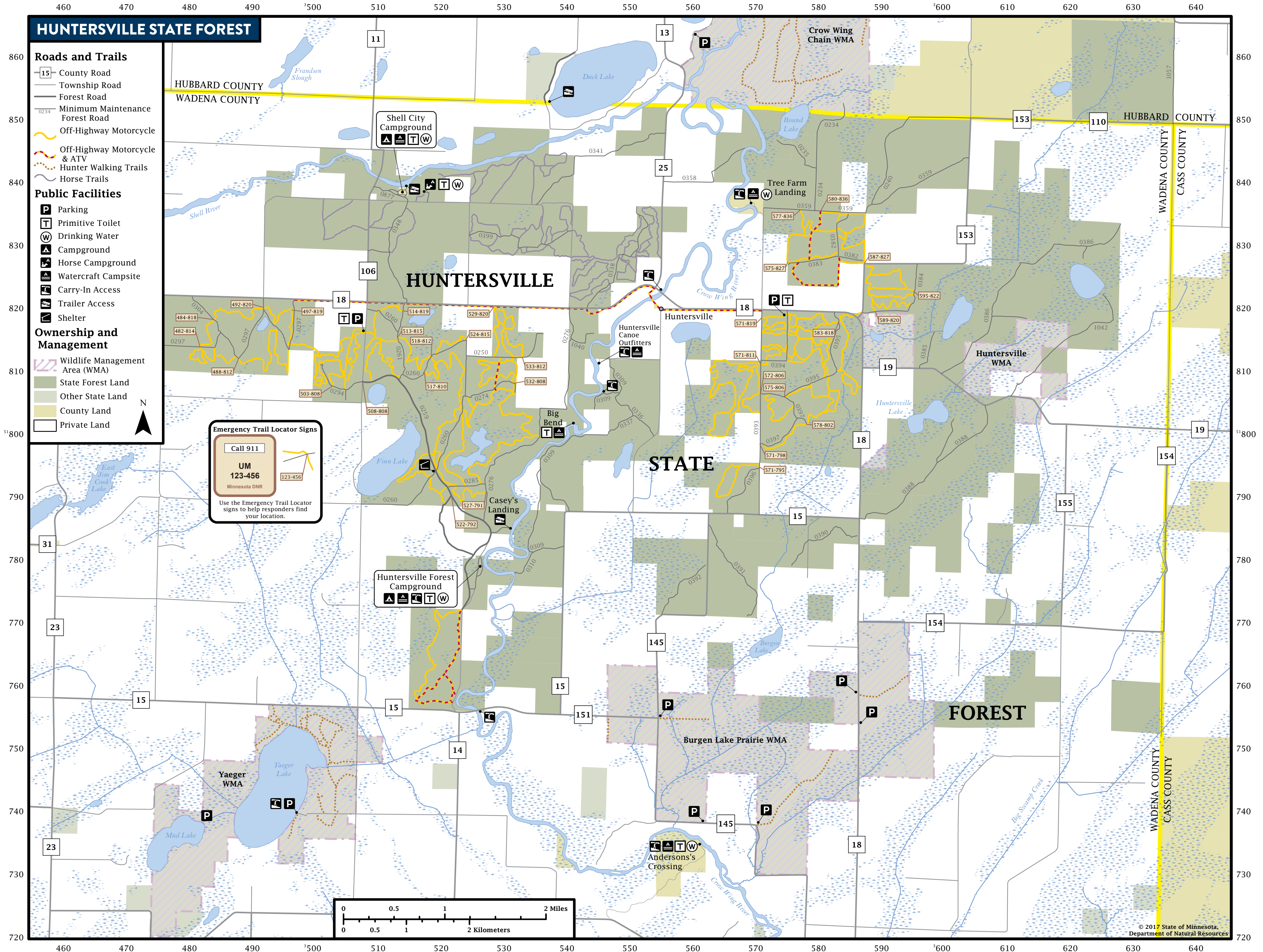
A WORKING FOREST: From year to year, you may see changes in this forest. The DNR manages the trees, water, and wildlife in state forests for everyone to keep them healthy and meet recreational, environmental, and economic goals. Trees are harvested to make a variety of products, such as lumber and building materials, pulp for making paper, pallets, fencing, and telephone poles. Through careful planning, harvesting, and planting, land managers create forest openings or plant trees and vegetation to improve habitat for white-tailed deer, ruffed grouse, and waterfowl. The DNR manages state forests to prevent wildfires, and keep our water and air clean.

HISTORY: The Dakota and the Ojibwe people first occupied the Crow Wing River area. In the early 1700s French fur traders arrived and controlled the fur business. Between the 1870s and the early 1900s, logging was Wadena County's chief economy. Timber taken from the dense forests along the Crow Wing River and its tributaries created jobs for hundreds of early settlers and provided an economic base for many towns in the area. Along the Shell River in the northern part of the Huntersville State Forest, Shell City was established in 1879 as a lumber camp. It was named for the river's clams, which were used to make buttons in the city's button factories. The Shell City Navigation Company headquarters, incorporated in 1884, was formed to operate steamboats and barges on the Shell and Crow Wing rivers from Shell City to the Mississippi River. Shell City was eventually abandoned and the region's economy came to depend on agriculture. Today, recreationists still use the roads created by the early loggers.

WILDLIFE: This forest is home to white-tailed deer, bears, gray wolves, snowshoe hares, and ruffed grouse. Furbearers include fishers, otters, bobcats, coyotes, beavers, and red and gray foxes. Although not a major flyway, birdwatchers can spot a variety of warblers, red-shouldered hawks, and bald eagles. Migratory waterfowl can be found in the area's many ponds and bogs in the spring and fall.

PUT THIS MAP ON YOUR DEVICE
This map is geo-referenced. Download an app such as the free Avenza app on your device and use it to open the PDF of this map. The app will place a blue locator dot on the map wherever you take your device, even if you are out of cellular range.

The information in this map is dynamic and may change over time. The Minnesota DNR is not liable for improper or incorrect use of the data described and/or contained. The data and related graphics are not legal documents, and are protected by copyright.





HUNTERSVILLE STATE FOREST



CAMPING

No reservations required. Fees collected on site. First-come, first-served.

HUNTERSVILLE LANDING CAMPGROUND

This campground has 24 drive-in campsites, including one handicap-accessible campsite, picnic tables, drinking water, five vault toilets, and access to the Crow Wing River for swimming, fishing, and boating.

SHELL CITY HORSE CAMPGROUND

Located next to 24 miles of designated horse trails, the campground has eight individual campsites, 27 horse campsites, vault toilets, and drinking water. Horse campsites have picket lines and compost bins for manure disposal.

SHELL CITY LANDING CAMPGROUND

This campground has 19 campsites, vault toilets, drinking water, and access to the Shell River for swimming, fishing, and canoeing.

TRAILS

HORSE TRAILS

Twenty-four miles of designated horse trails are located in the northern portion of the forest. Trails contain two loops and a river crossing, and wind through gently rolling, wooded hills away from off-road vehicle trails. Minnesota Horse Trail Passes are required.

mndnr.gov/horseback_riding/horsepass

CROW WING RIVER STATE WATER TRAIL

One of the state's best "wilderness" canoe routes, this river rises from a chain of 11 lakes in southern Hubbard County and flows 90 miles southeast to join the Mississippi River. There are five canoe landings along the Crow Wing River in and near the Huntersville State Forest.

mndnr.gov/watertrails

SNOWMOBILE TRAILS

Scenic, hilly snowmobile trails wind through the forest, including the Shell City Landing and Huntersville Landing campgrounds. There is a shelter on the trail west of the Huntersville campground. Snowmobile trails are located on forest roads. Some are plowed in the winter for logging activities. Trails are marked with orange signs.

- Snowmobile trail maps are on mndnr.gov/snowmobiling/interactive_map
- Snowmobiles must be registered. mndnr.gov/regulations/snowmobile



OFF-HIGHWAY VEHICLE TRAILS

With more than 58 miles of off-highway motorcycle (OHM) and 3.6 miles of all-terrain vehicle (ATV) trails, the Huntersville State Forest is a destination for riders in northwestern Minnesota. Much of the OHM trail is single-track, with some two-track and service road loops for beginning riders. All trails are marked and range from easy to more difficult.

Highway-licensed vehicles may operate on signed forest roads.

Forest roads are open to OHVs unless posted closed.

Visit mndnr.gov/ohv for up-to-date rules, maps, and trail and road closures.

KNOW YOUR VEHICLE

Always make sure you are riding on the appropriate trail that is signed and mapped for your vehicle. Off-highway vehicles (OHVs) must be registered in Minnesota or have a trail pass.

mndnr.gov/licenses/ohv

CLASSIFICATION: LIMITED

All trails on state lands have a classification regarding motor vehicles. The Huntersville State Forest is classified as "limited," which means OHVs are allowed **only** on signed and mapped routes that are open for a specific OHV use (e.g., ATVs, OHMs, or off-road vehicles).

USING MOTOR VEHICLES WHEN HUNTING AND TRAPPING

The limited classification allows some exceptions for big game hunters and trappers during hunting and trapping seasons. For example, you can use Class 1 ATVs to hunt big game or transport temporary hunting stands between October and December, retrieve big game in September, trap during open season for protected furbearers, and trap for minnows under certain conditions.

See the *Minnesota Hunting and Trapping Regulations Handbook*: mndnr.gov/regulations/hunting

HUNTING

The Huntersville State Forest provides plenty of game for hunting. In the appropriate season, licensed hunters can hunt for deer, grouse, and other game on state forest land and nearby wildlife management areas.

mndnr.gov/hunting

FIREARMS AND BOWS

During open hunting season licensed hunters may carry an uncased and loaded firearm or strung bow to hunt. However, firearms and bows must be cased and unloaded or unstrung when in or within 200 feet of any forest recreation area (campgrounds, picnic areas, beaches, parking lots, interpretive sites, and trailheads). Installing permanent tree stands and cutting shooting lanes are not allowed.

Visit mndnr.gov/regulations/hunting

FISHING AND TRAPPING

There are no special provisions or restrictions on fishing or trapping within state forests.

You must have the proper license and abide by the same rules and seasons as anywhere else in Minnesota.

Visit mndnr.gov/fishing for up-to-date regulations.

RESPECT PRIVATE PROPERTY

The Huntersville State Forest contains private land within its boundaries, so know where you are. Hunting on private land within a state forest and crossing private land to access public land is subject to state trespass laws. Watch for posted "No Trespassing" and "No Hunting" signs and stay off private property.

You must have permission before entering private land, even to cross it to access public land.

Trespassing is a misdemeanor. If convicted, you could lose your license to hunt. All conservation and peace officers enforce trespass laws.

WILDLIFE MANAGEMENT AREAS

Wildlife Management Areas (WMAs) provide habitat for deer, bear, small game, forest upland birds, and waterfowl. WMAs are established to protect lands and waters that have high potential for wildlife, public hunting, trapping, and fishing. Hunting and trapping are allowed with the proper license and during the proper season.

There are four WMAs in and near the Huntersville State Forest.

BURGEN LAKE PRAIRIE WMA

Containing more than 2,300 acres, this WMA has deer, bear, small game, forest upland birds, and waterfowl. There is a remnant population of prairie chickens.

CROW WING CHAIN WMA

Located around the First Crow Wing Lake and along the Crow Wing River, this WMA contains more than 3,300 acres within a complex of lakes, wetlands, and old fields. Half of the WMA is forested with aspen; jack, red, and white pine; and oak. An extensive system of hunter walking trails and field roads provide good access. There are also two water accesses, one on Palmer Lake and another on the Crow Wing River. Game species include deer, bear, small game, forest upland birds, and plenty of waterfowl.

HUNTERSVILLE WMA

This smaller WMA consists of 520 acres on three separate tracts. It contains wetlands, lowland brush, forest, and some grasslands. Game species include deer, bear, small game, forest upland birds, and waterfowl. There is a remnant population of prairie chickens.

YAEGER LAKE WMA

With more than 850 acres located around Yaeger Lake, this WMA contains a mix of pine and hardwood forests, prairies, wet meadows, wetlands, and a natural wild rice lake. Here hunters can find deer, bear, grouse, wild turkey, and waterfowl. There is a network of gated hunter walking trails and a floating boardwalk access to Yaeger Lake.

WMA maps: mndnr.gov/maps/compass.html

WMA information: mndnr.gov/wmas



FOR MORE INFORMATION

Minnesota Department of Natural Resources
info.dnr@state.mn.us
 651-296-6157
 888-646-6367
 TDD (Telecommunications Device for the Deaf)
 651-296-5484
 800-657-3929

EMERGENCY SERVICE - DIAL 911

WADENA COUNTY SHERIFF

218-631-7600

NEAREST HOSPITAL SERVICES

St. Joseph's Hospital
 600 Pleasant
 Park Rapids, MN 56470
 218-732-3311

The Minnesota DNR prohibits discrimination in its programs and services based on race, color, creed, religion, national origin, sex, public assistance status, age, sexual orientation or disability. Persons with disabilities may request reasonable modifications to access or participate in DNR programs and services by contacting the DNR ADA Title II Coordinator at info.dnr@state.mn.us or 651-296-6157. Discrimination inquiries should be sent to Minnesota DNR, 500 Lafayette Road, St. Paul, MN 55155-4049; or Office of Civil Rights, U.S. Department of the Interior, 1849 C Street NW, Washington, D.C. 20240.

© 2017, State of Minnesota, Department of Natural Resources

Printed on Minnesota made paper containing a minimum of 10 percent post-consumer waste.



FORESTRY
 500 Lafayette Road, St. Paul, MN 55155
 888-646-6367
mndnr.gov



GENERAL STATE FOREST RULES

Whether you are camping, hunting, riding, geocaching, skiing, or gathering berries, take care to leave the forest in good condition.

- Forest lands are open at all times unless otherwise posted. Forest day-use areas are open between 6 a.m. and 10 p.m. Between 10 p.m. and 8 a.m., only registered campers may enter or remain in a campground.
- Campsites have limited amenities and are first-come, first-served. Dispersed camping is also allowed at least 1 mile outside of designated campgrounds on state forest land for no fee.
- Summer camping is limited to 14 days. Between the second Sunday in September and the first Saturday in May, camping is limited to 21 days.
- Pack out what you pack in. Remove all personal property. Do not burn litter or garbage.
- Don't leave equipment unattended for more than 24 hours.
- Erecting permanent buildings of any kind is prohibited.
- Use firewood approved by the DNR or dead fuelwood collected on-site. Kiln-dried, unstained, unpainted dimensional lumber free from metal or other foreign objects is also permitted. It is illegal to bring in any other firewood. These rules are to prevent accidentally introducing harmful pests such as emerald ash borers.
mndnr.gov/firewood
- Keep campfires no larger than 3 feet wide and 3 feet high. Attend the fire at all times. Completely extinguish fires before leaving the area. It should be cold to the touch.
- Bury human waste (if vault toilets are not available) and animal parts at least 150 feet from a water body and away from areas where it could cause a nuisance or hazard to public health.
- Collecting berries, mushrooms, or dead fuelwood for personal use while in the forest is okay. However collecting large amounts of these items to take home for personal use or sale requires a permit. Get permits from your local DNR forestry office.
mndnr.gov/areas/forestry
- Hiking and horseback riding are allowed on all trails except groomed ski trails.
- This is a partial list of rules. For more information, visit the website listed below.

mndnr.gov/state_forests/rules.html

SCAN TO DOWNLOAD MAP

