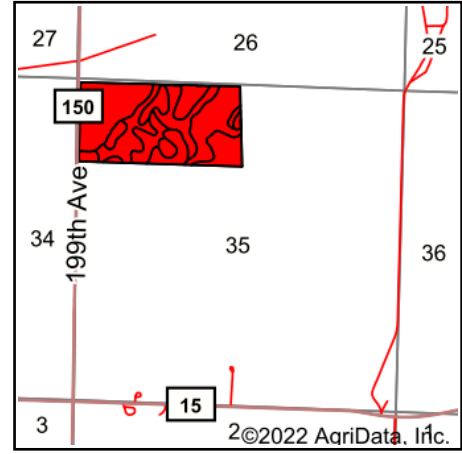
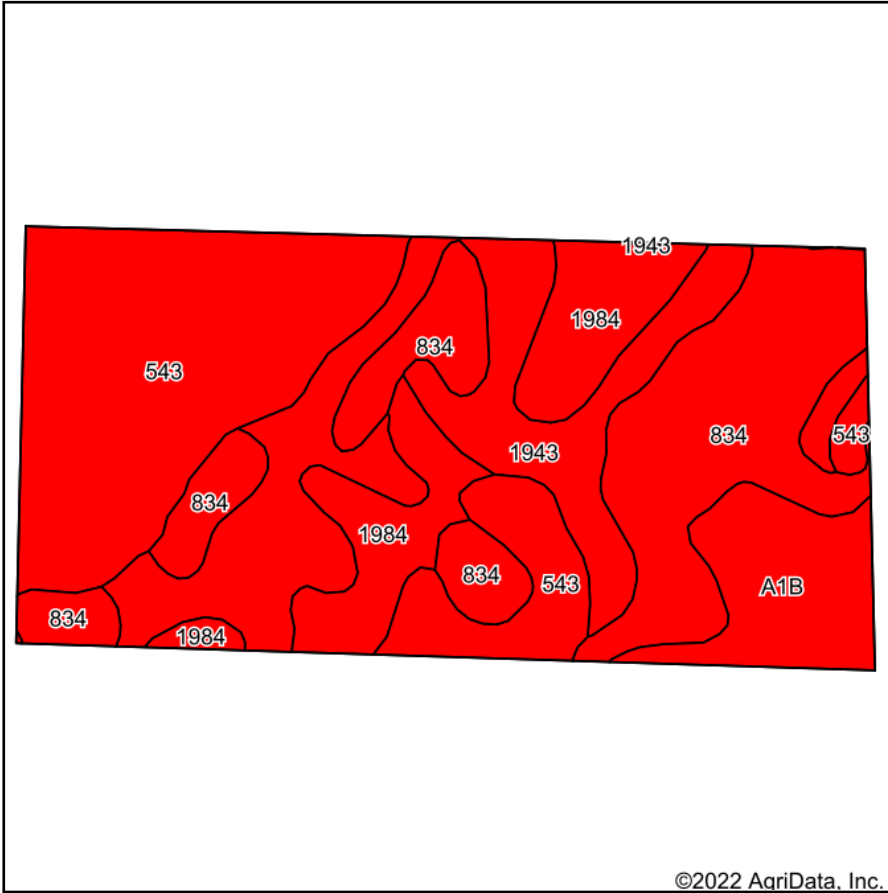


# Soils Map



State: **Minnesota**  
 County: **Wadena**  
 Location: **35-138N-34W**  
 Township: **Shell River**  
 Acres: **80**  
 Date: **1/14/2022**



Maps Provided By:



Soils data provided by USDA and NRCS.

©2022 AgriData, Inc.

© AgriData, Inc. 2021

www.AgriDataInc.com

Area Symbol: MN159, Soil Area Version: 17

Code	Soil Description	Acres	Percent of field	PI Legend	Non-Irr Class *c	Irr Class *c	Productivity Index	Corn Bu	Soybeans Bu	*n NCCPI Overall	*n NCCPI Corn	*n NCCPI Small Grains	*n NCCPI Soybeans
543	Markey muck, occasionally ponded, 0 to 1 percent slopes	25.23	31.5%		VIw		5			38	15	38	20
834	Friendship-Meehan loamy sands	20.94	26.2%		IVs		38	59	17	36	36	27	23
1943	Roscommon loamy sand	17.74	22.2%		IVw		32	50	14	27	27	24	19
1984	Leafriver muck	9.60	12.0%		VIw		15			12	8	12	7
A1B	Eagleview and Menahga soils, 1 to 8 percent slopes	6.49	8.1%		IVs	IVs	40			38	38	29	23
<b>Weighted Average</b>					<b>4.87</b>	<b>0.32</b>	<b>23.7</b>	<b>26.5</b>	<b>7.6</b>	<b>*n 31.9</b>	<b>*n 24.2</b>	<b>*n 28.2</b>	<b>*n 19.2</b>

\*n: The aggregation method is "Weighted Average using all components"

\*c: Using Capabilities Class Dominant Condition Aggregation Method

Soils data provided by USDA and NRCS.